



Datasheet for ABIN2144404
anti-CD3 + CD19 antibody (FITC,PE)



[Go to Product page](#)

1 Image

Overview

| | |
|--------------|---------------------------------------------------|
| Quantity: | 20 tests |
| Target: | CD3 + CD19 (CD3/CD19) |
| Reactivity: | Human |
| Host: | Mouse |
| Clonality: | Monoclonal |
| Conjugate: | This CD3 + CD19 antibody is conjugated to FITC,PE |
| Application: | Flow Cytometry (FACS) |

Product Details

Target Details

| | |
|-------------------|------------------------------------------------|
| Target: | CD3 + CD19 (CD3/CD19) |
| Alternative Name: | CD3,CD19 (CD3/CD19 Products) |

Application Details

| | |
|--------------------|---------------------------------------------------------------------------------------------------------------------------------------------------------------------------------------------------------------------------------------------------------------------------------------------------------------------------------------------------------------------------------------------------------------------------------------------------------------------------------------------------------------------------------------------------------------------------------|
| Application Notes: | Optimal working dilution should be determined by the investigator. |
| Assay Procedure: | <ul style="list-style-type: none">• Take 100 µL peripheral blood anticoagulated by EDTA and add to the bottom of 5 mL tube,• Add 20 µL labeled antibody to the bottom of flow tube mixing with the whole blood, incubate for 20 minutes at room temperature away from light,• Add 2 ml 1×RBC lysis buffer, incubate for 10 minutes away from light after mixing, dissolve red blood cells (recommended: RBC lysing Solution 10×, Cat.: FXP001),• Sample tube is set to 1000 rpm centrifugation for 5 minutes, discard the supernatant, |

Application Details

- Add 2 mL PBS wash buffer to resuspend the cells, then 1000 rpm centrifugation for 5 minutes, discard the supernatant,
- Add 0.5 mL PBS wash buffer to resuspend the cells and detect by flow cytometry (sample should be determined on the day on the machine and can also be added fixation overnight at 4 °C then measured).
- [PBS wash buffer: PBS +1 % FBS +0.1 % NaN₃, Cat.: FXP005]
- [Cell fixation: 2 % formaldehyde solution]

Restrictions: For Research Use only

Handling

Format: Liquid

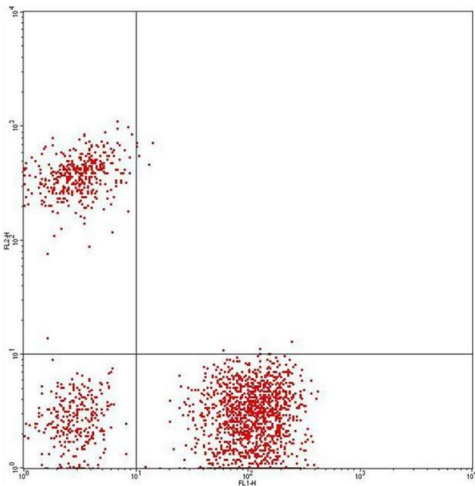
Buffer: Phosphate-buffered solution, pH 7.4, containing and 0.2 % (w/v) BSA

Preservative: Sodium azide

Precaution of Use: This product contains Sodium azide: a POISONOUS AND HAZARDOUS SUBSTANCE which should be handled by trained staff only.

Storage: 4 °C

Images



Flow Cytometry

Image 1.