



[Go to Product page](#)

Datasheet for ABIN2144558

anti-Fc gamma RII (CD32) antibody (FITC)

1 Image

Overview

Quantity:	50 tests
Target:	Fc gamma RII (CD32)
Reactivity:	Human
Host:	Mouse
Clonality:	Monoclonal
Conjugate:	FITC
Application:	Flow Cytometry (FACS)

Product Details

Clone:	4AIV-3
Isotype:	IgG2a
Characteristics:	4AIV-3 reacts with an low affinity receptor for aggregated IgG (FcγRII), 40 kD. CD32 Molecule is expressed on B cells, monocytes, granulocytes and platelets. This clone also cross-reacts with monocytes, granulocytes and subset of peripheral blood lymphocytes of non-human primates. The reactivity on leukocyte populations is similar to that Obs.

Target Details

Target:	Fc gamma RII (CD32)
Alternative Name:	CD32 (CD32 Products)

Application Details

Application Notes: Optimal working dilution should be determined by the investigator.

Assay Procedure:

- Take 100 μ L peripheral blood anticoagulated by EDTA and add to the bottom of 5 mL tube,
- Add 10 μ L labeled antibody to the bottom of flow tube mixing with the whole blood, incubate for 20 minutes at room temperature away from light,
- Add 2 mL 1 \times RBC lysis buffer, incubate for 10 minutes away from light after mixing, dissolve red blood cells (recommended: RBC lysing Solution 10 \times , Cat.: FXP001),
- Sample tube is set to 1000 rpm centrifugation for 5 minutes, discard the supernatant,
- Add 2 mL PBS wash buffer to resuspend the cells, then 1000 rpm centrifugation for 5 minutes, discard the supernatant,
- Add 0.5 mL PBS wash buffer to resuspend the cells and detect by flow cytometry (sample should be determined on the day on the machine and can also be added fixation overnight at 4 $^{\circ}$ C then measured).
- [PBS wash buffer: PBS + 1 % FBS + 0.1 % NaN₃, Cat.: FXP005]
- [Cell fixation: 2 % formaldehyde solution]

Restrictions: For Research Use only

Handling

Format: Liquid

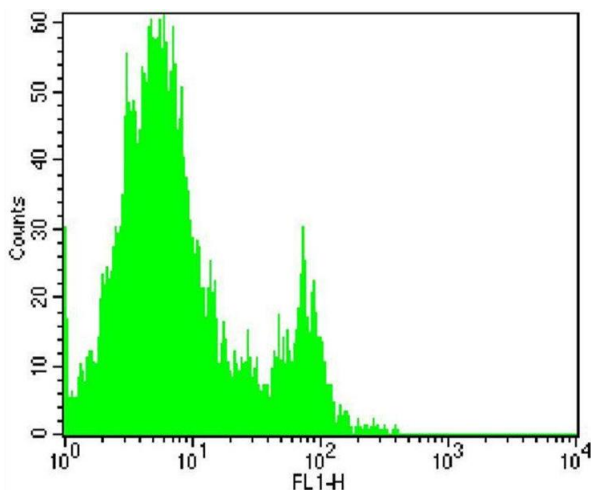
Buffer: Phosphate-buffered solution, pH 7.4, containing and 0.2 % (w/v) BSA

Preservative: Sodium azide

Precaution of Use: This product contains Sodium azide: a POISONOUS AND HAZARDOUS SUBSTANCE which should be handled by trained staff only.

Storage: 4 $^{\circ}$ C

Images



Flow Cytometry

Image 1.