

Datasheet for ABIN2144579
anti-CD37 antibody (FITC)[Go to Product page](#)

1 Image

Overview

Quantity:	50 tests
Target:	CD37 (TSPAN26)
Reactivity:	Human
Host:	Mouse
Clonality:	Monoclonal
Conjugate:	This CD37 antibody is conjugated to FITC
Application:	Flow Cytometry (FACS), ELISA, Immunofluorescence (IF), Immunohistochemistry (Paraffin-embedded Sections) (IHC (p))

Product Details

Clone:	4AIPO-24
Isotype:	IgG2b
Characteristics:	4AIPO-24 reacts with CD37 (a.k.a. gp52-40), a 40-52 kDa molecule, which is strongly expressed on B cells from the pre-B cell stage, but not on plasma cells. It is also present at low levels on some T cells, monocytes and granulocytes. CD37 is a stable marker for malignancies derived from mature B cells, such as B-CLL, HCL and all types of B-NHL. CD37 is involved in signal transduction. CD37 is stable marker for malignancies derived from mature B cells: B-CLL. HCL and B-NHL.

Target Details

Target:	CD37 (TSPAN26)
---------	----------------

Target Details

Alternative Name:	CD37 (TSPAN26 Products)
Pathways:	Positive Regulation of Immune Effector Process , Production of Molecular Mediator of Immune Response

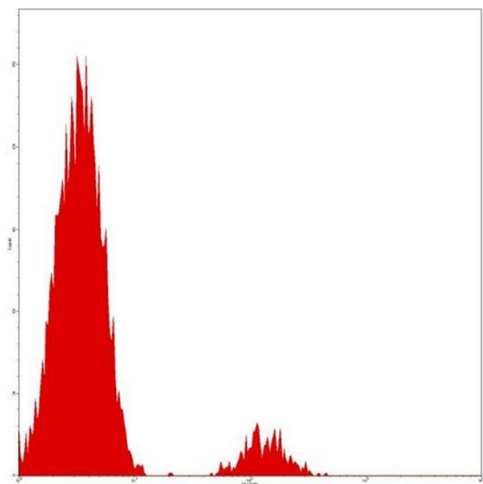
Application Details

Application Notes:	Optimal working dilution should be determined by the investigator.
Assay Procedure:	<ul style="list-style-type: none">• Take 100 µL peripheral blood anticoagulated by EDTA and add to the bottom of 5 mL tube,• Add 10 µL labeled antibody to the bottom of flow tube mixing with the whole blood, incubate for 20 minutes at room temperature away from light,• Add 2 mL 1×RBC lysis buffer, incubate for 10 minutes away from light after mixing, dissolve red blood cells (recommended: RBC lysing Solution 10×, Cat.: FXP001),• Sample tube is set to 1000 rpm centrifugation for 5 minutes, discard the supernatant,• Add 2 mL PBS wash buffer to resuspend the cells, then 1000 rpm centrifugation for 5 minutes, discard the supernatant,• Add 0.5 mL PBS wash buffer to resuspend the cells and detect by flow cytometry (sample should be determined on the day on the machine and can also be added fixation overnight at 4 °C then measured).• [PBS wash buffer: PBS +1 % FBS +0.1 % NaN₃, Cat.: FXP005]• [Cell fixation: 2 % formaldehyde solution]

Restrictions:	For Research Use only
---------------	-----------------------

Handling

Format:	Liquid
Buffer:	Phosphate-buffered solution, pH 7.4, containing and 0.2 % (w/v) BSA
Preservative:	Sodium azide
Precaution of Use:	This product contains Sodium azide: a POISONOUS AND HAZARDOUS SUBSTANCE which should be handled by trained staff only.
Storage:	4 °C



Flow Cytometry

Image 1.