

Datasheet for ABIN214515
anti-NLRP1 antibody (C-Term)[Go to Product page](#)

2 Images

Overview

Quantity:	0.05 mg
Target:	NLRP1
Binding Specificity:	C-Term
Reactivity:	Human
Host:	Rabbit
Clonality:	Polyclonal
Conjugate:	This NLRP1 antibody is un-conjugated
Application:	Western Blotting (WB), Immunohistochemistry (IHC), Immunohistochemistry (Paraffin-embedded Sections) (IHC (p)), Immunocytochemistry (ICC)

Product Details

Brand:	IHC-plus™
Isotype:	IgG
Purification:	Purified IgG

Target Details

Target:	NLRP1
Alternative Name:	NALP1 / NLRP1 (NLRP1 Products)
Background:	Name/Gene ID: NLRP1

Synonyms: NLRP1, CLR17.1, CARD7, DEFCAP, DEFCAP-L/S, NAC, SLEV1, VAMAS1, KIAA0926,

Target Details

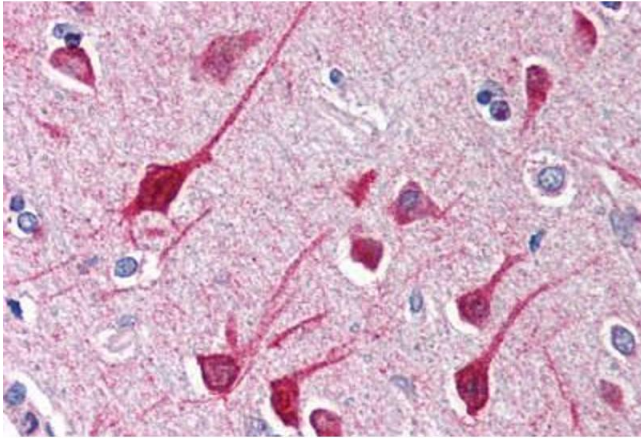
	NALP1, PP1044
Gene ID:	22861
UniProt:	Q9C000
Pathways:	Positive Regulation of Endopeptidase Activity , Inflammasome

Application Details

Application Notes:	Approved: ICC, IHC, IHC-P (2.5 µg/mL), WB (1 - 2 µg/mL) Usage: Immunohistochemistry: This antibody was validated for use in immunohistochemistry on a panel of 21 formalin-fixed, paraffin-embedded (FFPE) human tissues after heat induced antigen retrieval in pH 6.0 citrate buffer. After incubation with the primary antibody, slides were incubated with biotinylated secondary antibody, followed by alkaline phosphatase-streptavidin and chromogen. The stained slides were evaluated by a pathologist to confirm staining specificity. The optimal working concentration for this antibody was determined to be 2.5 µg/mL.
Comment:	Target Species of Antibody: Human
Restrictions:	For Research Use only

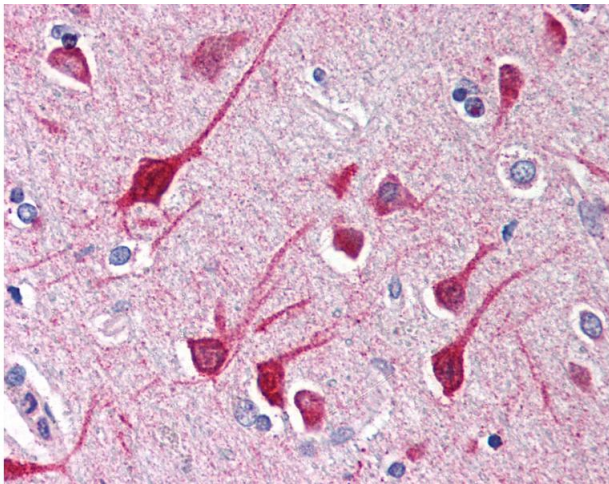
Handling

Format:	Liquid
Concentration:	Lot specific
Buffer:	PBS, 0.02 % sodium azide.
Preservative:	Sodium azide
Precaution of Use:	This product contains Sodium azide: a POISONOUS AND HAZARDOUS SUBSTANCE which should be handled by trained staff only.
Handling Advice:	avoid freeze thaw cycles. Store undiluted.
Storage:	4 °C, -20 °C
Storage Comment:	Store at 4°C for 3 months and -20°C, stable for up to 1 year. Avoid repeated freeze-thaw cycles.
Expiry Date:	12 months



Immunohistochemistry (Paraffin-embedded Sections)

Image 1. Human Brain, Cortex (formalin-fixed, paraffin-embedded) stained with NLRP1 antibody ABIN214515 at 2.5 ug/ml followed by biotinylated goat anti-rabbit IgG secondary antibody ABIN481713, alkaline phosphatase-streptavidin and chromogen.



Immunohistochemistry

Image 2. Anti-NLRP1 / NALP1 antibody IHC of human brain, cortex. Immunohistochemistry of formalin-fixed, paraffin-embedded tissue after heat-induced antigen retrieval. Antibody concentration 5 ug/ml.