

Datasheet for ABIN2145371

**Mouse IgG2a,IgG2b isotype control (FITC,PE)**[Go to Product page](#)**1** Image

## Overview

Quantity:	50 tests
Target:	IgG2a,IgG2b
Host:	Mouse
Conjugate:	FITC,PE
Application:	Isotype Control (IsoC), Flow Cytometry (FACS), Immunofluorescence (IF)

## Product Details

Isotype:	IgG2a, IgG2b
----------	--------------

## Target Details

Target:	IgG2a,IgG2b
---------	-------------

## Application Details

Application Notes:	Optimal working dilution should be determined by the investigator.
--------------------	--

Assay Procedure:	<ul style="list-style-type: none"><li>• Take 100 µL peripheral blood anticoagulated by EDTA and add to the bottom of 5 mL tube,</li><li>• Add 20 µL labeled antibody to the bottom of flow tube mixing with the whole blood, incubate for 20 minutes at room temperature away from light,</li><li>• Add 2 ml 1×RBC lysis buffer, incubate for 10 minutes away from light after mixing, dissolve red blood cells (recommended: RBC lysing Solution 10×, Cat.: FXP001),</li><li>• Sample tube is set to 1000 rpm centrifugation for 5 minutes, discard the supernatant,</li><li>• Add 2 mL PBS wash buffer to resuspend the cells, then 1000 rpm centrifugation for 5 minutes, discard the supernatant,</li><li>• Add 0.5 mL PBS wash buffer to resuspend the cells and detect by flow cytometry (sample</li></ul>
------------------	--

## Application Details

---

should be determined on the day on the machine and can also be added fixation overnight at 4 °C then measured).

- [PBS wash buffer: PBS +1 % FBS +0.1 % NaN<sub>3</sub>, Cat.: FXP005]
- [Cell fixation: 2 % formaldehyde solution]

Restrictions: For Research Use only

## Handling

---

Format: Liquid

Buffer: Phosphate-buffered solution, pH 7.4, containing and 0.2 % (w/v) BSA

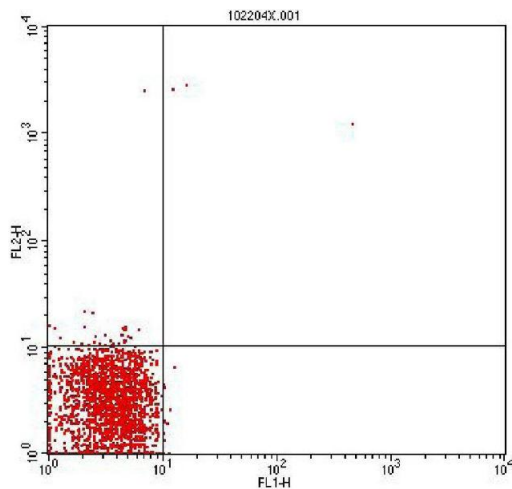
Preservative: Sodium azide

Precaution of Use: This product contains Sodium azide: a POISONOUS AND HAZARDOUS SUBSTANCE which should be handled by trained staff only.

Storage: 4 °C

## Images

---



### Flow Cytometry

Image 1.