

Datasheet for ABIN2145387

Mouse IgG2a isotype control (FITC)[Go to Product page](#)**1** Image

Overview

Quantity:	100 tests
Target:	IgG2a
Host:	Mouse
Conjugate:	FITC
Application:	Flow Cytometry (FACS), Isotype Control (IsoC), Immunofluorescence (IF)

Product Details

Isotype:	IgG2a
Characteristics:	This antibody can be used as a mouse IgG2a isotype control in flow cytometry and other applications.

Target Details

Target:	IgG2a
Abstract:	IgG2a Products
Target Type:	Antibody

Application Details

Application Notes:	Optimal working dilution should be determined by the investigator.
Assay Procedure:	<ul style="list-style-type: none">• Take 100 μL peripheral blood anticoagulated by EDTA and add to the bottom of 5 mL tube,• Add 20 μL labeled antibody to the bottom of flow tube mixing with the whole blood, incubate for 20 minutes at room temperature away from light,

Application Details

- Add 2 ml 1×RBC lysis buffer, incubate for 10 minutes away from light after mixing, dissolve red blood cells (recommended: RBC lysing Solution 10×, Cat.: FXP001),
- Sample tube is set to 1000 rpm centrifugation for 5 minutes, discard the supernatant,
- Add 2 mL PBS wash buffer to resuspend the cells, then 1000 rpm centrifugation for 5 minutes, discard the supernatant,
- Add 0.5 mL PBS wash buffer to resuspend the cells and detect by flow cytometry (sample should be determined on the day on the machine and can also be added fixation overnight at 4 °C then measured).
- [PBS wash buffer: PBS + 1 % FBS + 0.1 % NaN₃, Cat.: FXP005]
- [Cell fixation: 2 % formaldehyde solution]

Restrictions: For Research Use only

Handling

Format: Liquid

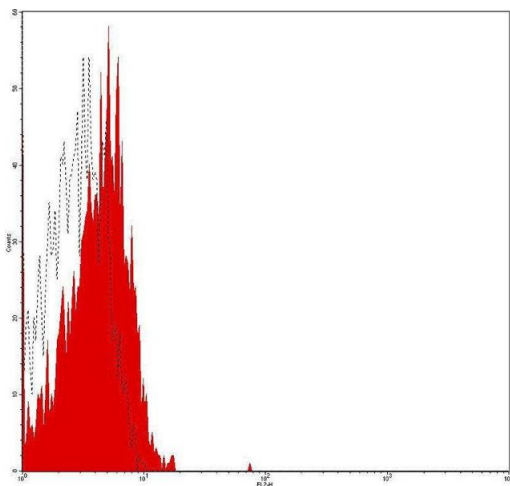
Buffer: Phosphate-buffered solution, pH 7.4, containing and 0.2 % (w/v) BSA

Preservative: Sodium azide

Precaution of Use: This product contains Sodium azide: a POISONOUS AND HAZARDOUS SUBSTANCE which should be handled by trained staff only.

Storage: 4 °C

Images



Flow Cytometry

Image 1.