

Datasheet for ABIN2145401  
**Mouse IgG2a isotype control (PE)**



[Go to Product page](#)

1 Image

## Overview

|              |  |
|--------------|--|
| Quantity:    | 50 tests   |
| Target:      | IgG2a  |
| Host:        | Mouse  |
| Conjugate:   | PE   |
| Application: | Flow Cytometry (FACS), Isotype Control (IsoC), Immunofluorescence (IF) |

## Product Details

|                  |  |
|------------------|--|
| Isotype:         | IgG2a  |
| Characteristics: | This antibody can be used as a mouse IgG2a isotype control in flow cytometry and other applications. |

## Target Details

|              |                                |
|--------------|--------------------------------|
| Target:      | IgG2a                          |
| Abstract:    | <a href="#">IgG2a Products</a> |
| Target Type: | Antibody                       |

## Application Details

|                    |   |
|--------------------|---|
| Application Notes: | Optimal working dilution should be determined by the investigator.  |
| Assay Procedure:   | <ul style="list-style-type: none"><li>• Take 100 µL peripheral blood anticoagulated by EDTA and add to the bottom of 5 mL tube,</li><li>• Add 20 µL labeled antibody to the bottom of flow tube mixing with the whole blood, incubate for 20 minutes at room temperature away from light,</li></ul> |

## Application Details

- Add 2 ml 1×RBC lysis buffer, incubate for 10 minutes away from light after mixing, dissolve red blood cells (recommended: RBC lysing Solution 10×, Cat.: FXP001),
- Sample tube is set to 1000 rpm centrifugation for 5 minutes, discard the supernatant,
- Add 2 mL PBS wash buffer to resuspend the cells, then 1000 rpm centrifugation for 5 minutes, discard the supernatant,
- Add 0.5 mL PBS wash buffer to resuspend the cells and detect by flow cytometry (sample should be determined on the day on the machine and can also be added fixation overnight at 4 °C then measured).
- [PBS wash buffer: PBS +1 % FBS +0.1 % NaN<sub>3</sub>, Cat.: FXP005]
- [Cell fixation: 2 % formaldehyde solution]

Restrictions: For Research Use only

## Handling

Format: Liquid

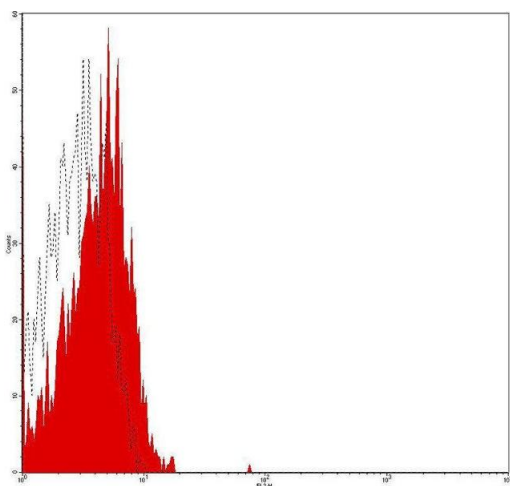
Buffer: Phosphate-buffered solution, pH 7.4, containing and 0.2 % (w/v) BSA

Preservative: Sodium azide

Precaution of Use: This product contains Sodium azide: a POISONOUS AND HAZARDOUS SUBSTANCE which should be handled by trained staff only.

Storage: 4 °C

## Images



### Flow Cytometry

Image 1.