

Datasheet for ABIN2145419
Mouse IgG1 Isotype Control



[Go to Product page](#)

1 Image

Overview

| | |
|--------------|---|
| Quantity: | 500 µg |
| Target: | IgG1 |
| Host: | Mouse |
| Application: | Flow Cytometry (FACS), Isotype Control (IsoC) |

Product Details

| | |
|------------------|---|
| Isotype: | IgG1 |
| Characteristics: | This antibody can be used as a mouse IgG1 isotype control in flow cytometry and other applications. |
| Purification: | Purified |

Target Details

| | |
|--------------|-------------------------------|
| Target: | IgG1 |
| Abstract: | IgG1 Products |
| Target Type: | Antibody |

Application Details

| | |
|--------------------|---|
| Application Notes: | Optimal working dilution should be determined by the investigator. |
| Assay Procedure: | <ul style="list-style-type: none">• Take 100 µL peripheral blood anticoagulated by EDTA and add to the bottom of 5 mL tube,• Add appropriate amount of antibody to the bottom of flow tube mixing with the whole blood, incubate for 30 minutes at room temperature, |

Application Details

- Add 2 ml 1×RBC lysis buffer, incubate for 10 minutes after mixing, dissolve red blood cells (recommended: RBC lysing Solution 10×, Cat.: FXP001),
- Sample tube is set to 1000 rpm centrifugation for 5 minutes, discard the supernatant,
- Add 2 mL PBS wash buffer to resuspend the cells, then 1000 rpm centrifugation for 5 minutes, discard the supernatant,
- Add appropriate amount of fluorescent-labeled anti-mouse IgGs and incubate for 20 minutes away from light at room temperature.
- Repeat step 5.
- Add 0.5 mL PBS wash buffer to resuspend the cells and detect by flow cytometry (sample should be determined on the day on the machine and can also be added fixation overnight at 4 °C then measured).
- [PBS wash buffer: PBS +1 % FBS +0.1 % NaN₃, Cat.: FXP005]
- [Cell fixation: 2 % formaldehyde solution]

Restrictions: For Research Use only

Handling

Format: Liquid

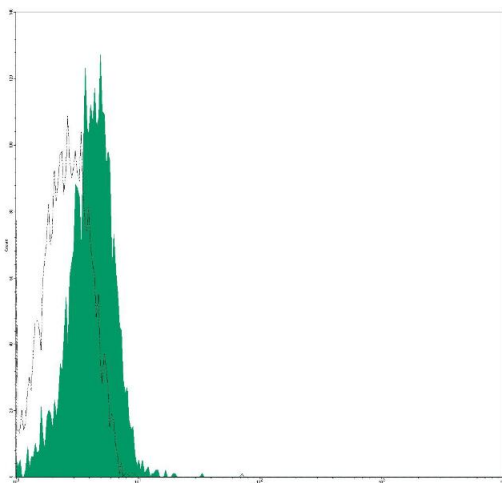
Buffer: Phosphate-buffered solution, pH 7.5

Preservative: Sodium azide

Precaution of Use: This product contains Sodium azide: a POISONOUS AND HAZARDOUS SUBSTANCE which should be handled by trained staff only.

Storage: 4 °C

Images



Flow Cytometry

Image 1.