



Datasheet for ABIN214581

anti-COL6 antibody

3 Images



[Go to Product page](#)

Overview

Quantity:	50 µg
Target:	COL6
Reactivity:	Human, Cow
Host:	Rabbit
Clonality:	Polyclonal
Application:	Western Blotting (WB), ELISA, Immunohistochemistry (IHC), Immunoprecipitation (IP), Immunohistochemistry (Paraffin-embedded Sections) (IHC (p)), Immunofluorescence (IF)

Product Details

Brand:	IHC-plus™
Immunogen:	Collagen Type VI from human and bovine placenta
Specificity:	Collagen Type VI from human and bovine placenta.
Purification:	Immunoaffinity purified

Target Details

Target:	COL6
Alternative Name:	Collagen VI (COL6 Products)

Application Details

Application Notes:	Approved: ELISA, IF, IHC, IHC-P (2.5 µg/mL), IP, WB
--------------------	---

Application Details

Usage: Percentage of reactivity with all isoforms of COL6 has not been determined.

Immunohistochemistry: This antibody was validated for use in immunohistochemistry on a panel of 21 formalin-fixed, paraffin-embedded (FFPE) human tissues after heat induced antigen retrieval in pH 6.0 citrate buffer. After incubation with the primary antibody, slides were incubated with biotinylated secondary antibody, followed by alkaline phosphatase-streptavidin and chromogen. The stained slides were evaluated by a pathologist to confirm staining specificity. The optimal working concentration for this antibody was determined to be 2.5 μ g/mL.

Comment: Target Species of Antibody: Human

Restrictions: For Research Use only

Handling

Format: Liquid

Concentration: Lot specific

Buffer: 0.125 M sodium borate, 0.075 M sodium chloride, 0.005 M EDTA, pH 8.0, 0.01 % sodium azide.

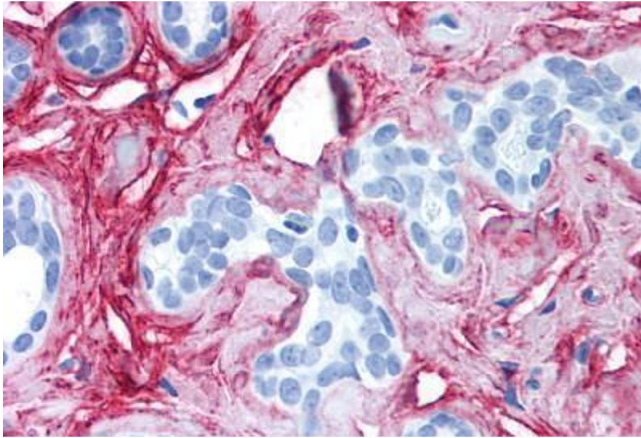
Preservative: Sodium azide

Precaution of Use: This product contains Sodium azide: a POISONOUS AND HAZARDOUS SUBSTANCE which should be handled by trained staff only.

Handling Advice: Avoid freeze-thaw cycles.

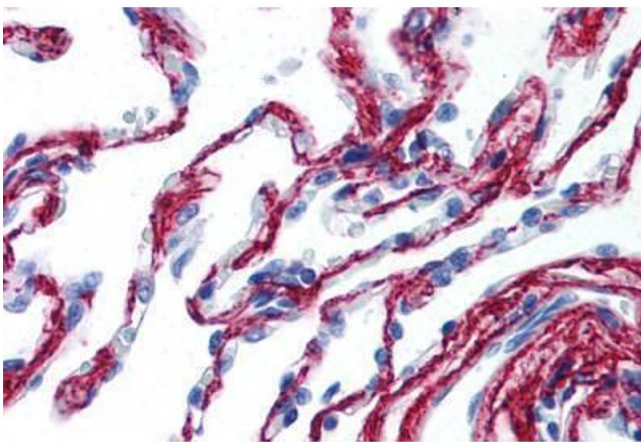
Storage: 4 °C, -20 °C

Storage Comment: Short term: 4°C. Long term: Store at -20°C. Avoid freeze-thaw cycles.



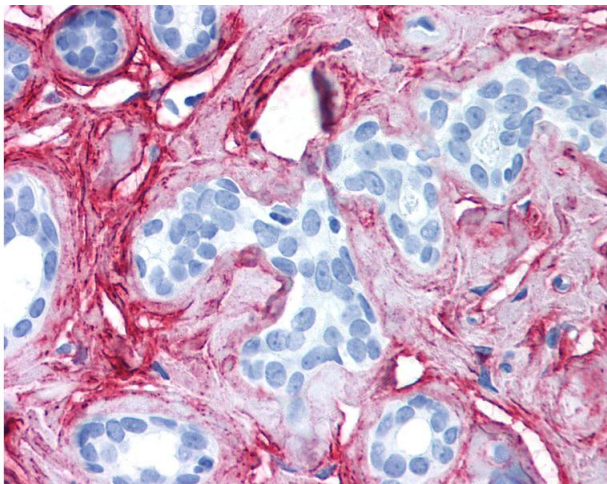
Immunohistochemistry (Paraffin-embedded Sections)

Image 1. Human Breast (formalin-fixed, paraffin-embedded) stained with COL6A1 antibody ABIN214581 at 2.5 ug/ml followed by biotinylated goat anti-rabbit IgG secondary antibody ABIN481713, alkaline phosphatase-streptavidin and chromogen.



Immunohistochemistry

Image 2. Human Lung (formalin-fixed, paraffin-embedded) stained with COL6A1 antibody ABIN214581 at 2.5 ug/ml followed by biotinylated goat anti-rabbit IgG secondary antibody ABIN481713, alkaline phosphatase-streptavidin and chromogen.



Immunohistochemistry

Image 3. Anti-Collagen VI antibody IHC of human breast. Immunohistochemistry of formalin-fixed, paraffin-embedded tissue after heat-induced antigen retrieval. Antibody concentration 5 ug/ml.