



[Go to Product page](#)

Datasheet for ABIN214599

anti-HIF3A antibody (AA 581-592)

3 Images

Overview

Quantity:	50 µg
Target:	HIF3A
Binding Specificity:	AA 581-592
Reactivity:	Human, Mouse
Host:	Rabbit
Clonality:	Polyclonal
Conjugate:	This HIF3A antibody is un-conjugated
Application:	Western Blotting (WB), ELISA, Immunohistochemistry (IHC), Immunofluorescence (IF), Immunohistochemistry (Paraffin-embedded Sections) (IHC (p))

Product Details

Brand:	IHC-plus™
Immunogen:	Synthetic peptide from mouse HIF3A. Type of Immunogen: Synthetic peptide
Specificity:	Hif3 a (Hypoxia Inducible Factor).
Purification:	Immunoaffinity purified

Target Details

Target:	HIF3A
Alternative Name:	HIF3A / HIF3-Alpha (HIF3A Products)

Target Details

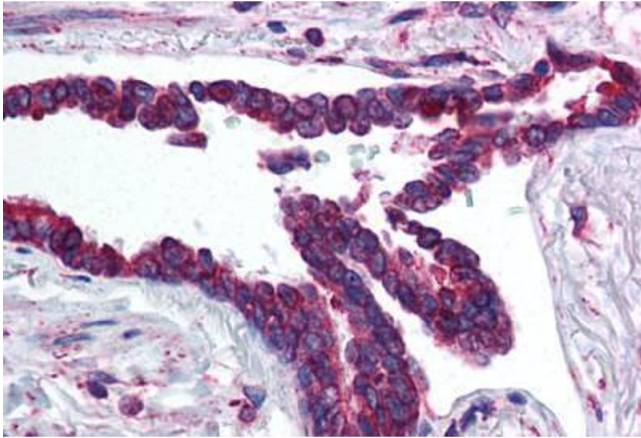
Background:	Name/Gene ID: HIF3A Synonyms: HIF3A, BHLHe17, HIF-3A, IPAS, HIF3-alpha-1, Inhibitory PAS domain protein, PASD7, HIF-3-alpha, HIF3-alpha, Member of PAS protein 7, MOP7
Gene ID:	64344
UniProt:	Q9Y2N7
Pathways:	Warburg Effect

Application Details

Application Notes:	Approved: ELISA (1:14000 - 1:80000), IF, IHC, IHC-P (5 µg/mL), WB (1:100 - 1:8000) Usage: Immunohistochemistry: This antibody was validated for use in immunohistochemistry on a panel of 21 formalin-fixed, paraffin-embedded (FFPE) human tissues after heat induced antigen retrieval in pH 6.0 citrate buffer. After incubation with the primary antibody, slides were incubated with biotinylated secondary antibody, followed by alkaline phosphatase-streptavidin and chromogen. The stained slides were evaluated by a pathologist to confirm staining specificity. The optimal working concentration for this antibody was determined to be 5 µg/mL.***Does not work to detect human protein in Western blot.***
Comment:	Target Species of Antibody: Mouse
Restrictions:	For Research Use only

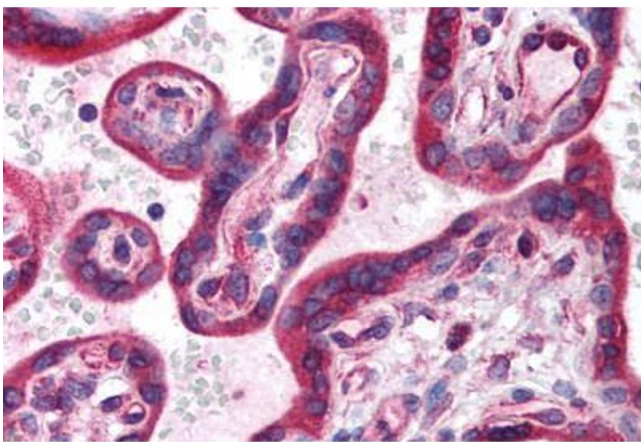
Handling

Format:	Liquid
Concentration:	Lot specific
Buffer:	0.02 M potassium phosphate, 0.15 M sodium chloride, pH 7.2, 0.01 % sodium azide.
Preservative:	Sodium azide
Precaution of Use:	This product contains Sodium azide: a POISONOUS AND HAZARDOUS SUBSTANCE which should be handled by trained staff only.
Handling Advice:	Avoid repeat freeze-thaw cycles.
Storage:	4 °C,-20 °C
Storage Comment:	Short term: 4°C. Long term: Store at -20°C. Avoid freeze-thaw cycles.



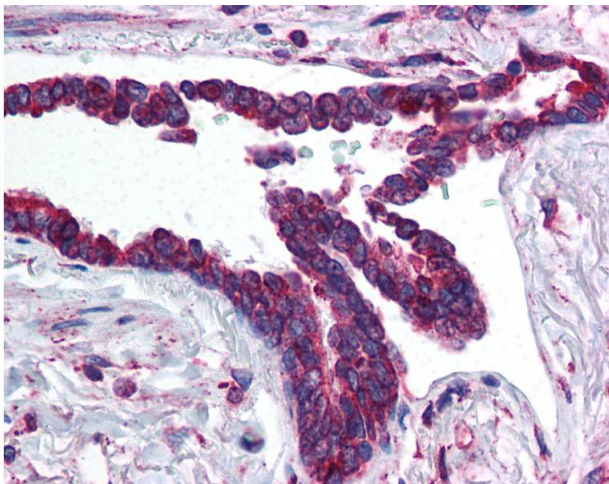
Immunohistochemistry (Paraffin-embedded Sections)

Image 1. Human Lung, Respiratory Epithelium (formalin-fixed, paraffin-embedded) stained with HIF3A antibody ABIN214599 at 5 ug/ml followed by biotinylated goat anti-rabbit IgG secondary antibody ABIN481713, alkaline phosphatase-streptavidin and chromogen.



Immunohistochemistry (Paraffin-embedded Sections)

Image 2. Human Placenta (formalin-fixed, paraffin-embedded) stained with HIF3A antibody ABIN214599 at 5 ug/ml followed by biotinylated goat anti-rabbit IgG secondary antibody ABIN481713, alkaline phosphatase-streptavidin and chromogen.



Immunohistochemistry

Image 3. Anti-HIF3A antibody IHC of human lung, respiratory epithelium. Immunohistochemistry of formalin-fixed, paraffin-embedded tissue after heat-induced antigen retrieval. Antibody concentration 5 ug/ml.