

Datasheet for ABIN214728
anti-BRD2 antibody (AA 524-573)

3 Images

[Go to Product page](#)

Overview

Quantity:	50 µg
Target:	BRD2
Binding Specificity:	AA 524-573
Reactivity:	Human, Mouse, Cow, Dog, Rat, Horse, Pig, Hamster, Monkey
Host:	Rabbit
Clonality:	Polyclonal
Conjugate:	This BRD2 antibody is un-conjugated
Application:	Western Blotting (WB), Immunohistochemistry (IHC), Immunohistochemistry (Paraffin-embedded Sections) (IHC (p))

Product Details

Brand:	IHC-plus™
Immunogen:	Synthetic peptide located between aa524-573 of human BRD2 (P25440, NP_005095). Percent identity by BLAST analysis: Human, Gorilla, Gibbon, Monkey, Galago, Marmoset, Mouse, Rat, Hamster, Elephant, Panda, Dog, Bovine, Horse, Pig, Opossum (100%), Xenopus (92%), Zebrafish (91%), Guinea pig (85%). Type of Immunogen: Synthetic peptide
Specificity:	Human BRD2
Predicted Reactivity:	Percent identity by BLAST analysis: Human, Mouse, Rat, Dog, Bovine, Pig (100%) Xenopus (92%) Zebrafish (91%).

Product Details

Purification: Immunoaffinity purified

Target Details

Target: BRD2

Alternative Name: BRD2 / RING3 ([BRD2 Products](#))

Background: Name/Gene ID: BRD2
Subfamily: BRD
Family: Protein Kinase

Synonyms: BRD2, Bromodomain containing 2, FSRG1, KIAA9001, NaT, RING3, RNF3, O27.1.1, Bromodomain-containing 2, D6S113E, FSH

Gene ID: 6046

NCBI Accession: [NP_005095](#)

UniProt: [P25440](#)

Pathways: [Chromatin Binding](#), [SARS-CoV-2 Protein Interactome](#), [The Global Phosphorylation Landscape of SARS-CoV-2 Infection](#)

Application Details

Application Notes: Approved: IHC, IHC-P (5 µg/mL), WB (0.2 - 1 µg/mL)

Usage: Immunohistochemistry: This antibody was validated for use in immunohistochemistry on a panel of 21 formalin-fixed, paraffin-embedded (FFPE) human tissues after heat induced antigen retrieval in pH 6.0 citrate buffer. After incubation with the primary antibody, slides were incubated with biotinylated secondary antibody, followed by alkaline phosphatase-streptavidin and chromogen. The stained slides were evaluated by a pathologist to confirm staining specificity. The optimal working concentration for this antibody was determined to be 5 µg/mL.

Comment: Target Species of Antibody: Human

Restrictions: For Research Use only

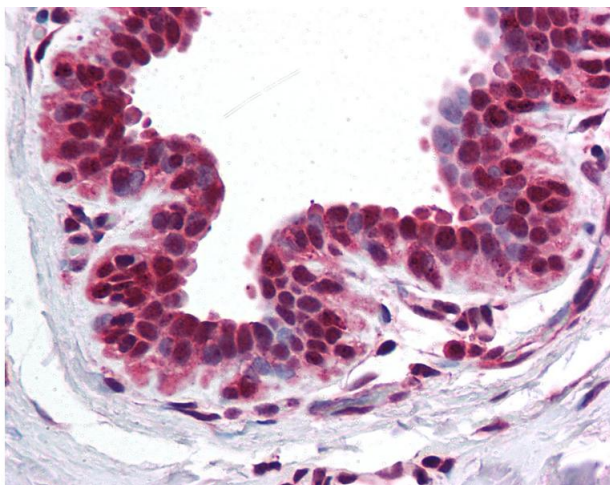
Handling

Format: Lyophilized

Handling

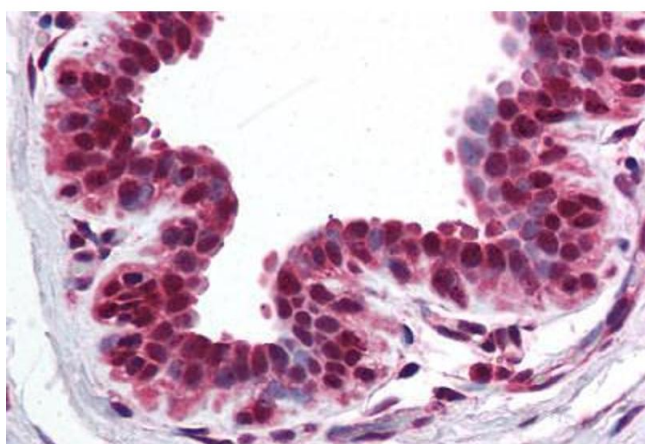
Reconstitution:	Distilled water
Concentration:	Lot specific
Buffer:	Lyophilized from PBS with 2 % sucrose
Handling Advice:	Avoid repeat freeze-thaw cycles.
Storage:	4 °C, -20 °C
Storage Comment:	Long term: -20°C, the use of 50% glycerol is recommended if storing aliquots in -20°C for long term use (up to 1 year) Short term (less than 1 week): 4°C. Avoid freeze-thaw cycles.

Images



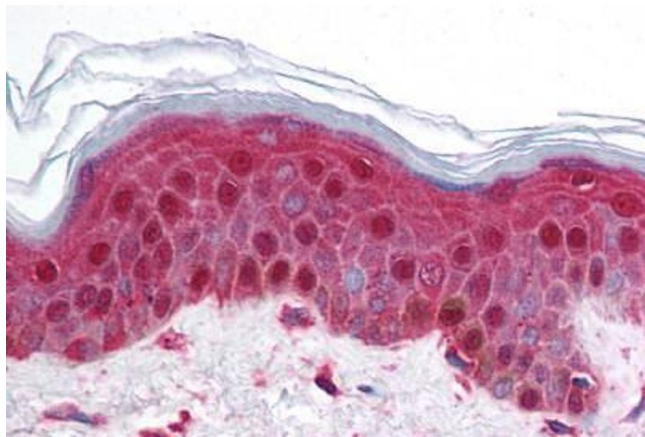
Immunohistochemistry

Image 1. Anti-BRD2 antibody IHC of human breast. Immunohistochemistry of formalin-fixed, paraffin-embedded tissue after heat-induced antigen retrieval. Antibody concentration 5 ug/ml. This image was taken for the unconjugated form of this product. Other form ...



Immunohistochemistry (Paraffin-embedded Sections)

Image 2. Human Breast (formalin-fixed, paraffin-embedded) stained with BRD2 antibody ABIN214728 at 5 ug/ml followed by biotinylated goat anti-rabbit IgG secondary antibody ABIN481713, alkaline phosphatase-streptavidin and chromogen.



Immunohistochemistry (Paraffin-embedded Sections)

Image 3. Human Skin (formalin-fixed, paraffin-embedded) stained with BRD2 antibody ABIN214728 at 5 ug/ml followed by biotinylated goat anti-rabbit IgG secondary antibody ABIN481713, alkaline phosphatase-streptavidin and chromogen.