



[Go to Product page](#)

Datasheet for ABIN214733

anti-CACNG1 antibody (AA 66-115)

2 Images

Overview

Quantity:	50 µg
Target:	CACNG1
Binding Specificity:	AA 66-115
Reactivity:	Mouse, Human, Rat, Rabbit, Guinea Pig, Dog, Bat, Hamster, Monkey
Host:	Rabbit
Clonality:	Polyclonal
Conjugate:	This CACNG1 antibody is un-conjugated
Application:	Western Blotting (WB), Immunohistochemistry (IHC), Immunohistochemistry (Paraffin-embedded Sections) (IHC (p))

Product Details

Brand:	IHC-plus™
Immunogen:	Synthetic peptide located between aa66-115 of human CACNG1 (Q06432, NP_000718). Percent identity by BLAST analysis: Human, Chimpanzee, Gorilla, Gibbon, Monkey, Galago, Marmoset, Mouse, Rat, Hamster, Bat, Rabbit, Opossum, Guinea pig (100%), Bovine, Horse, Platypus (92%), Elephant, Dog (85%). Type of Immunogen: Synthetic peptide
Specificity:	Human CACNG1
Predicted Reactivity:	Percent identity by BLAST analysis: Mouse, Rat (100%) Dog (85%).
Purification:	Immunoaffinity purified

Target Details

Target:	CACNG1
Alternative Name:	CACNG1 / CACNG (CACNG1 Products)
Background:	Name/Gene ID: CACNG1 Subfamily: Calcium channel - gamma subunit Family: Ion Channel Synonyms: CACNG1, CACNG, CACNLG, Gamma 1
Gene ID:	786
NCBI Accession:	NP_000718
UniProt:	Q06432

Application Details

Application Notes:	Approved: IHC, IHC-P (10 µg/mL), WB (0.2 - 1 µg/mL) Usage: Immunohistochemistry: This antibody was validated for use in immunohistochemistry on a panel of 21 formalin-fixed, paraffin-embedded (FFPE) human tissues after heat induced antigen retrieval in pH 6.0 citrate buffer. After incubation with the primary antibody, slides were incubated with biotinylated secondary antibody, followed by alkaline phosphatase-streptavidin and chromogen. The stained slides were evaluated by a pathologist to confirm staining specificity. The optimal working concentration for this antibody was determined to be 10 µg/mL.
Comment:	Target Species of Antibody: Human
Restrictions:	For Research Use only

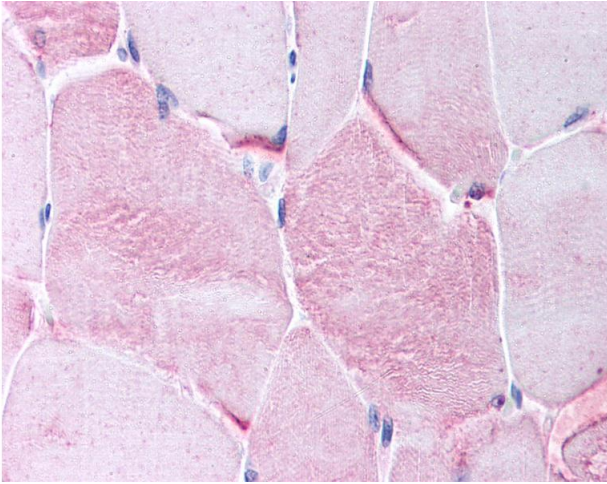
Handling

Format:	Lyophilized
Reconstitution:	After adding water, will consist of PBS buffer with 2 % sucrose
Concentration:	Lot specific
Buffer:	Lyophilized from PBS with 2 % sucrose
Handling Advice:	Avoid repeat freeze-thaw cycles.
Storage:	4 °C, -20 °C

Handling

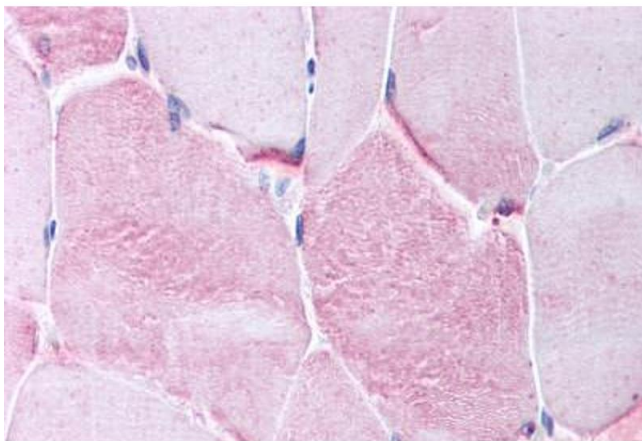
Storage Comment: Long term: -20°C, the use of 50% glycerol is recommended if storing aliquots in -20°C for long term use (up to 1 year)
Short term (less than 1 week): 4°C. Avoid freeze-thaw cycles.

Images



Immunohistochemistry

Image 1. Anti-CACNG1 antibody IHC of human skeletal muscle. Immunohistochemistry of formalin-fixed, paraffin-embedded tissue after heat-induced antigen retrieval. Antibody concentration 10 ug/ml. This image was taken for the unconjugated form of this product ...



Immunohistochemistry (Paraffin-embedded Sections)

Image 2. Human Skeletal Muscle (formalin-fixed, paraffin-embedded) stained with CACNG1 antibody ABIN214733 at 10 ug/ml followed by biotinylated goat anti-rabbit IgG secondary antibody ABIN481713, alkaline phosphatase-streptavidin and chromogen.