

Datasheet for ABIN214734
anti-CCL18 antibody (C-Term)

2 Images

[Go to Product page](#)

Overview

Quantity:	50 µg
Target:	CCL18
Binding Specificity:	C-Term
Reactivity:	Human, Monkey
Host:	Rabbit
Clonality:	Polyclonal
Conjugate:	This CCL18 antibody is un-conjugated
Application:	Western Blotting (WB), Immunohistochemistry (IHC), Immunohistochemistry (Paraffin-embedded Sections) (IHC (p))

Product Details

Brand:	IHC-plus™
Immunogen:	Synthetic peptide from C-Terminus of human CCL18 (P55774, NP_002979). Percent identity by BLAST analysis: Human, Chimpanzee, Gorilla, Gibbon, Monkey (100%), Rat (92%), Galago, Mouse, Panda (90%), Dog (84%). Type of Immunogen: Synthetic peptide
Specificity:	Human CCL18
Predicted Reactivity:	Percent identity by BLAST analysis: Human (100%).
Purification:	Immunoaffinity purified

Target Details

Target:	CCL18
Alternative Name:	CCL18 / PARC (CCL18 Products)
Background:	<p>Name/Gene ID: CCL18</p> <p>Subfamily: Interocrine beta</p> <p>Family: Interocrine</p> <p>Synonyms: CCL18, AMAC1, Cc chemokine amac1, DC-CK1, Chemokine (C-C), dendritic, DCCCK1, MIP-4, AMAC-1, MIP4, SCYA18, Small-inducible cytokine A18, C-C motif chemokine 18, Cc chemokine (amac)-1, CC chemokine ligand 18, CC chemokine PARC, CKb7, Dendritic cell chemokine 1, PARC, Small inducible cytokine A18</p>
Gene ID:	6362
NCBI Accession:	NP_002979
UniProt:	P55774

Application Details

Application Notes:	<p>Approved: IHC, IHC-P (10 µg/mL), WB (0.2 - 1 µg/mL)</p> <p>Usage: Immunohistochemistry: This antibody was validated for use in immunohistochemistry on a panel of 21 formalin-fixed, paraffin-embedded (FFPE) human tissues after heat induced antigen retrieval in pH 6.0 citrate buffer. After incubation with the primary antibody, slides were incubated with biotinylated secondary antibody, followed by alkaline phosphatase-streptavidin and chromogen. The stained slides were evaluated by a pathologist to confirm staining specificity. The optimal working concentration for this antibody was determined to be 10 µg/mL.</p>
Comment:	Target Species of Antibody: Human
Restrictions:	For Research Use only

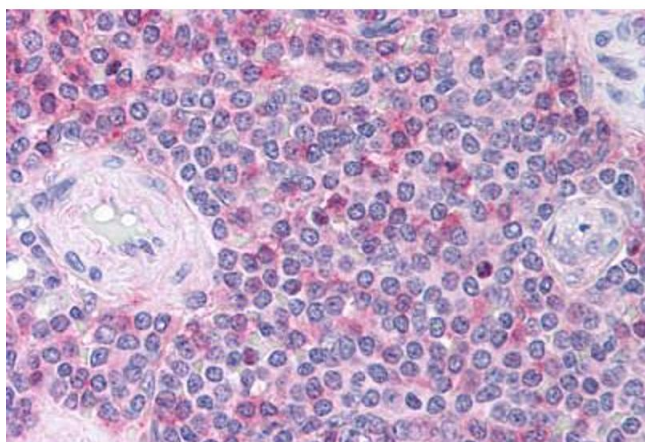
Handling

Format:	Lyophilized
Reconstitution:	Distilled water
Concentration:	Lot specific

Handling

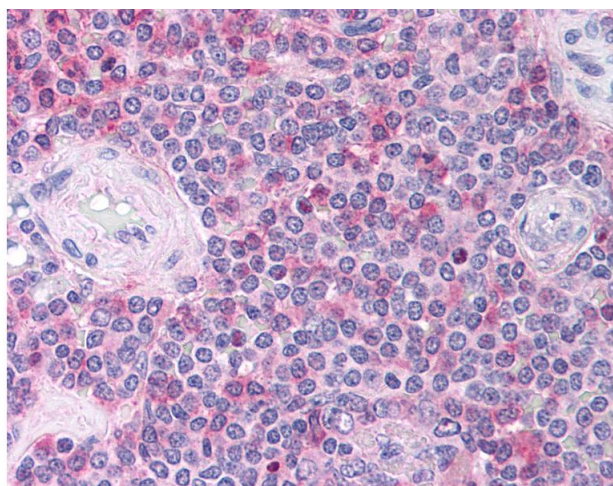
Buffer:	Lyophilized from PBS buffer with 2 % sucrose
Handling Advice:	Avoid repeat freeze-thaw cycles.
Storage:	4 °C, -20 °C
Storage Comment:	Long term: -20°C, the use of 50% glycerol is recommended if storing aliquots in -20°C for long term use (up to 1 year) Short term (less than 1 week): 4°C. Avoid freeze-thaw cycles.

Images



Immunohistochemistry (Paraffin-embedded Sections)

Image 1. Human Spleen (formalin-fixed, paraffin-embedded) stained with CCL18 antibody ABIN214734 at 10 ug/ml followed by biotinylated goat anti-rabbit IgG secondary antibody ABIN481713, alkaline phosphatase-streptavidin and chromogen.



Immunohistochemistry

Image 2. Anti-CCL18 antibody IHC of human spleen. Immunohistochemistry of formalin-fixed, paraffin-embedded tissue after heat-induced antigen retrieval. Antibody concentration 10 ug/ml. This image was taken for the unconjugated form of this product. Other fo ...