

Datasheet for ABIN214748  
**anti-CXCL12 antibody (C-Term)**

## 3 Images

[Go to Product page](#)

## Overview

Quantity:	50 µg
Target:	CXCL12
Binding Specificity:	C-Term
Reactivity:	Human, Mouse, Dog, Chicken, Xenopus laevis, Bat, Guinea Pig, Horse, Monkey
Host:	Rabbit
Clonality:	Polyclonal
Conjugate:	This CXCL12 antibody is un-conjugated
Application:	Western Blotting (WB), Immunohistochemistry (IHC), Immunohistochemistry (Paraffin-embedded Sections) (IHC (p))

## Product Details

Brand:	IHC-plus™
Immunogen:	Synthetic peptide from C-Terminus of human CXCL12 (P48061, NP_000600). Percent identity by BLAST analysis: Human, Chimpanzee, Gorilla, Orangutan, Gibbon, Monkey, Galago, Marmoset, Mouse, Dog, Cat, Bat, Horse, Pig, Opossum, Guinea pig, Turkey, Zebra finch, Chicken, Platypus, Xenopus (100%), Rat, Bovine (90%), Elephant (81%).  Type of Immunogen: Synthetic peptide
Specificity:	Human CXCL12
Predicted Reactivity:	Percent identity by BLAST analysis: Dog, Pig, Chicken (100%) Rat, Bovine (90%).
Purification:	Immunoaffinity purified

## Target Details

Target:	CXCL12
Alternative Name:	SDF-1 / CXCL12 ( <a href="#">CXCL12 Products</a> )
Background:	Name/Gene ID: CXCL12 Subfamily: Intercrine alpha Family: Intercrine  Synonyms: CXCL12, C-X-C motif chemokine 12, HIRH, IRH, SDF-1, SDF-1b, SDF1A, SDF1B, TPAR1, TLSF-a, TLSF-b, SDF-1a, SDF1, Sdf1alpha, Stromal cell-derived factor 1, TLSF, HSDF-1, PBSF, SCYB12
Gene ID:	6387
NCBI Accession:	<a href="#">NP_000600</a>
UniProt:	<a href="#">P48061</a>
Pathways:	<a href="#">Regulation of Cell Size</a> , <a href="#">CXCR4-mediated Signaling Events</a> , <a href="#">Negative Regulation of intrinsic apoptotic Signaling</a>

## Application Details

Application Notes:	Approved: IHC, IHC-P (5 µg/mL), WB (0.2 - 1 µg/mL)  Usage: Immunohistochemistry: This antibody was validated for use in immunohistochemistry on a panel of 21 formalin-fixed, paraffin-embedded (FFPE) human tissues after heat induced antigen retrieval in pH 6.0 citrate buffer. After incubation with the primary antibody, slides were incubated with biotinylated secondary antibody, followed by alkaline phosphatase-streptavidin and chromogen. The stained slides were evaluated by a pathologist to confirm staining specificity. The optimal working concentration for this antibody was determined to be 5 µg/mL.
Comment:	Target Species of Antibody: Human
Restrictions:	For Research Use only

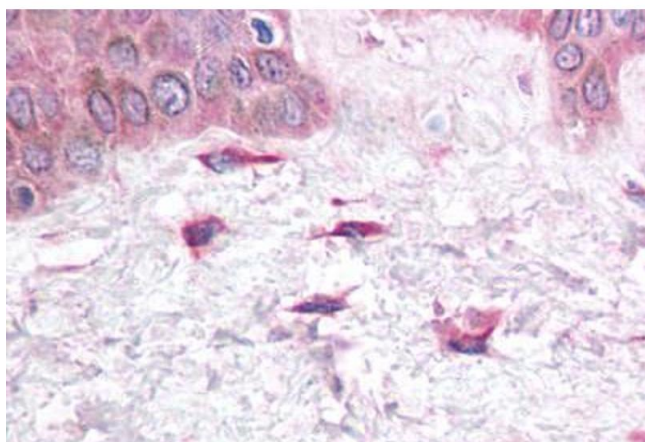
## Handling

Format:	Lyophilized
Reconstitution:	Distilled water
Concentration:	Lot specific

## Handling

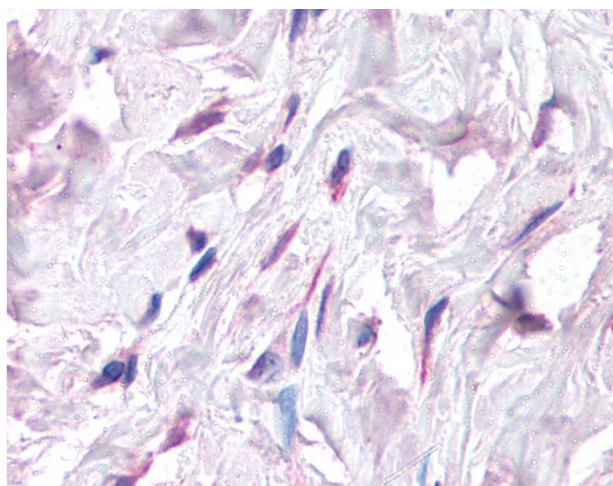
Buffer:	Lyophilized from PBS buffer with 2 % sucrose
Handling Advice:	avoid freeze thaw cycles.
Storage:	4 °C, -20 °C
Storage Comment:	Long term: -20°C, the use of 50% glycerol is recommended if storing aliquots in -20°C for long term use (up to 1 year) Short term (less than 1 week): 4°C. Avoid freeze-thaw cycles.

## Images



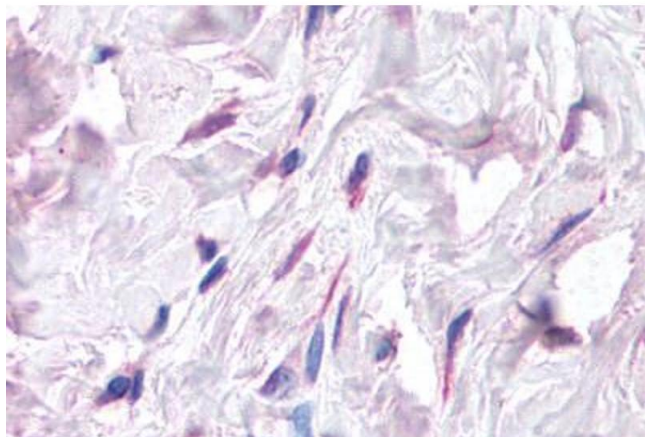
### Immunohistochemistry (Paraffin-embedded Sections)

**Image 1.** Human Skin, Fibroblasts (formalin-fixed, paraffin-embedded) stained with CXCL12 antibody ABIN214748 at 5 ug/ml followed by biotinylated goat anti-rabbit IgG secondary antibody ABIN481713, alkaline phosphatase-streptavidin and chromogen.



### Immunohistochemistry

**Image 2.** Anti-CXCL12 antibody IHC of human breast, fibroblasts. Immunohistochemistry of formalin-fixed, paraffin-embedded tissue after heat-induced antigen retrieval. Antibody concentration 5 ug/ml. This image was taken for the unconjugated form of this prod ...



#### Immunohistochemistry

**Image 3.** Human Breast, Fibroblasts (formalin-fixed, paraffin-embedded) stained with CXCL12 antibody ABIN214748 at 5 ug/ml followed by biotinylated goat anti-rabbit IgG secondary antibody ABIN481713, alkaline phosphatase-streptavidin and chromogen.