

Datasheet for ABIN214750
anti-ESR2 antibody (AA 82-131)



[Go to Product page](#)

2 Images

Overview

Quantity:	50 µg
Target:	ESR2
Binding Specificity:	AA 82-131
Reactivity:	Human, Mouse, Rat, Pig, Cow, Rabbit, Bat
Host:	Rabbit
Clonality:	Polyclonal
Conjugate:	This ESR2 antibody is un-conjugated
Application:	Western Blotting (WB), Immunohistochemistry (IHC), Immunohistochemistry (Paraffin-embedded Sections) (IHC (p))

Product Details

Brand:	IHC-plus™
Immunogen:	Synthetic peptide located between aa82-131 of human ESR2 (Q92731, NP_001428). Percent identity by BLAST analysis: Human, Gorilla, Gibbon, Baboon, Monkey, Mouse, Rat, Bovine, Bat, Pig (100%), Galago, Marmoset, Sheep, Panda, Dog, Guinea pig (92%), Hamster, Elephant, Cat (85%), Rabbit (84%). Type of Immunogen: Synthetic peptide
Specificity:	Human ESR2 / ER-Beta
Predicted Reactivity:	Percent identity by BLAST analysis: Human, Mouse, Rat, Bovine, Pig (100%) Sheep, Dog, Guinea pig (92%) Rabbit (84%).

Product Details

Purification: Immunoaffinity purified

Target Details

Target:	ESR2
Alternative Name:	ESR2 / ER Beta (ESR2 Products)
Background:	Name/Gene ID: ESR2 Subfamily: NR3 Steroid receptor Family: NHR Synonyms: ESR2, ESTRB, ER Beta, ERbeta, ER-BETA, ESR-BETA, ESRB, Estrogen receptor 2 (ER beta), NR3A2, Estrogen receptor beta, Estrogen receptor beta 4
Gene ID:	2100
NCBI Accession:	NP_001428
UniProt:	Q92731
Pathways:	Nuclear Receptor Transcription Pathway , EGFR Signaling Pathway , Intracellular Steroid Hormone Receptor Signaling Pathway , Steroid Hormone Mediated Signaling Pathway , Regulation of Intracellular Steroid Hormone Receptor Signaling

Application Details

Application Notes:	Approved: IHC, IHC-P (5 µg/mL), WB (0.2 - 1 µg/mL) Usage: Immunohistochemistry: This antibody was validated for use in immunohistochemistry on a panel of 21 formalin-fixed, paraffin-embedded (FFPE) human tissues after heat induced antigen retrieval in pH 6.0 citrate buffer. After incubation with the primary antibody, slides were incubated with biotinylated secondary antibody, followed by alkaline phosphatase-streptavidin and chromogen. The stained slides were evaluated by a pathologist to confirm staining specificity. The optimal working concentration for this antibody was determined to be 5 µg/mL.
Comment:	Target Species of Antibody: Human
Restrictions:	For Research Use only

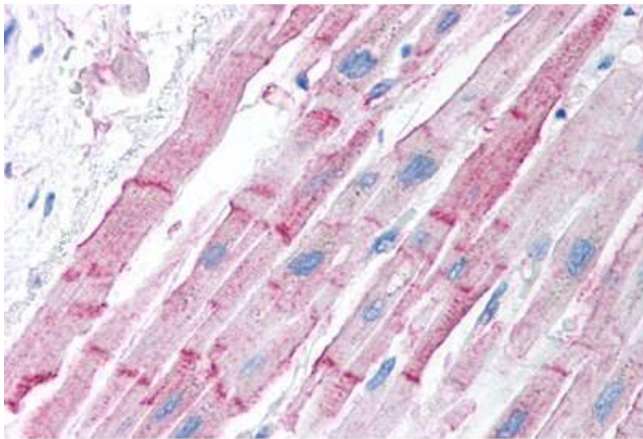
Handling

Format: Lyophilized

Handling

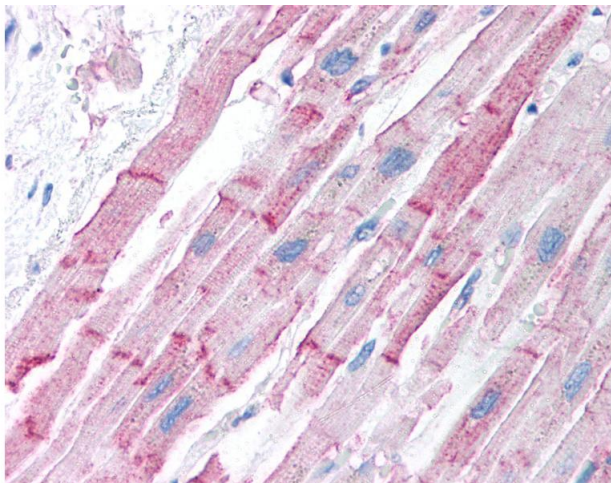
Reconstitution:	Reconstitute with sterile water.
Concentration:	Lot specific
Buffer:	Lyophilized from PBS with 2 % sucrose
Handling Advice:	Avoid repeat freeze-thaw cycles.
Storage:	4 °C, -20 °C
Storage Comment:	Long term: -20°C, the use of 50% glycerol is recommended if storing aliquots in -20°C for long term use (up to 1 year) Short term (less than 1 week): 4°C. Avoid freeze-thaw cycles.

Images



Immunohistochemistry (Paraffin-embedded Sections)

Image 1. Human Heart (formalin-fixed, paraffin-embedded) stained with ESR2 antibody ABIN214750 at 5 ug/ml followed by biotinylated goat anti-rabbit IgG secondary antibody ABIN481713, alkaline phosphatase-streptavidin and chromogen.



Immunohistochemistry

Image 2. Anti-ER-Beta antibody IHC of human heart. Immunohistochemistry of formalin-fixed, paraffin-embedded tissue after heat-induced antigen retrieval. Antibody concentration 5 ug/ml. This image was taken for the unconjugated form of this product. Other fo ...