

Datasheet for ABIN214763
anti-GATA3 antibody (AA 364-413)

2 Images



[Go to Product page](#)

Overview

Quantity:	50 µg
Target:	GATA3
Binding Specificity:	AA 364-413
Reactivity:	Human, Monkey
Host:	Rabbit
Clonality:	Polyclonal
Conjugate:	This GATA3 antibody is un-conjugated
Application:	Western Blotting (WB), Immunohistochemistry (IHC), Immunohistochemistry (Paraffin-embedded Sections) (IHC (p))

Product Details

Brand:	IHC-plus™
Immunogen:	Synthetic peptide located between aa364-413 of human GATA3 (P23771, NP_002042). Percent identity by BLAST analysis: Human, Chimpanzee, Gorilla, Orangutan, Gibbon, Baboon, Monkey, Tamarin (100%), Galago, Mouse, Rat, Sheep, Hamster, Elephant, Dog, Cat, Bovine, Bat, Rabbit, Horse, Pig, Opossum, Guinea pig, Turkey, Zebra finch, Chicken (92%), Platypus (85%). Type of Immunogen: Synthetic peptide
Specificity:	Human GATA3
Predicted Reactivity:	Percent identity by BLAST analysis: Human (100%) Mouse, Rat, Sheep, Dog, Bovine, Rabbit, Horse, Pig, Guinea pig, Chicken (92%).

Product Details

Purification: Immunoaffinity purified

Target Details

Target: GATA3

Alternative Name: GATA3 ([GATA3 Products](#))

Background: Name/Gene ID: GATA3
Family: Transcription factor

Synonyms: GATA3, GATA-binding factor 3, HDRS, GATA binding protein 3, GATA-binding protein 3, HDR

Gene ID: 2625

NCBI Accession: [NP_002042](#)

UniProt: [P23771](#)

Pathways: [Hormone Transport, Regulation of Hormone Metabolic Process, Tube Formation](#)

Application Details

Application Notes: Approved: IHC, IHC-P (5 µg/mL), WB (0.2 - 1 µg/mL)

Usage: Immunohistochemistry: This antibody was validated for use in immunohistochemistry on a panel of 21 formalin-fixed, paraffin-embedded (FFPE) human tissues after heat induced antigen retrieval in pH 6.0 citrate buffer. After incubation with the primary antibody, slides were incubated with biotinylated secondary antibody, followed by alkaline phosphatase-streptavidin and chromogen. The stained slides were evaluated by a pathologist to confirm staining specificity. The optimal working concentration for this antibody was determined to be 5 µg/mL.

Not recommended for: IF

Comment: Target Species of Antibody: Human

Restrictions: For Research Use only

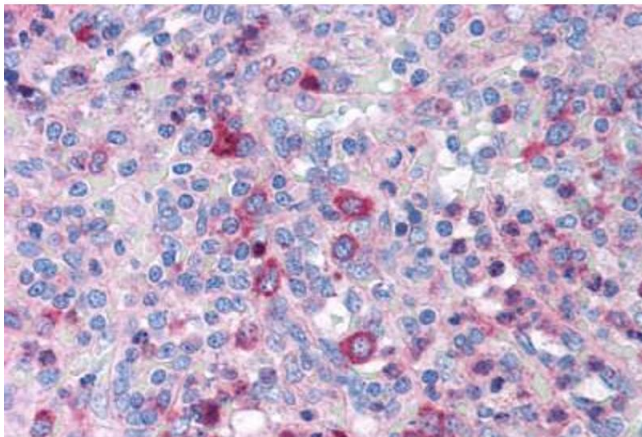
Handling

Format: Lyophilized

Handling

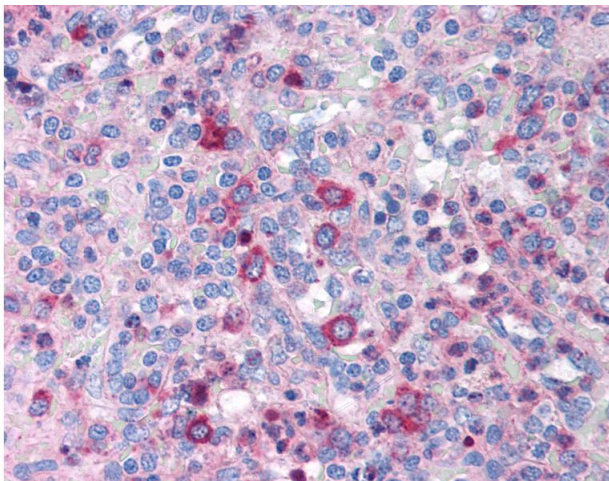
Reconstitution:	Reconstitute with 50 µL sterile ddH ₂ O.
Concentration:	Lot specific
Buffer:	Lyophilized from PBS with 2 % sucrose
Handling Advice:	Avoid repeat freeze-thaw cycles.
Storage:	4 °C, -20 °C
Storage Comment:	Long term: -20°C, the use of 50% glycerol is recommended if storing aliquots in -20°C for long term use (up to 1 year) Short term (less than 1 week): 4°C. Avoid freeze-thaw cycles.

Images



Immunohistochemistry (Paraffin-embedded Sections)

Image 1. Human Spleen (formalin-fixed, paraffin-embedded) stained with GATA3 antibody ABIN214763 at 5 µg/ml followed by biotinylated goat anti-rabbit IgG secondary antibody ABIN481713, alkaline phosphatase-streptavidin and chromogen.



Immunohistochemistry

Image 2. Anti-GATA3 antibody IHC of human spleen. Immunohistochemistry of formalin-fixed, paraffin-embedded tissue after heat-induced antigen retrieval. Antibody concentration 5 µg/ml. This image was taken for the unconjugated form of this product. Other for ...