

Datasheet for ABIN2149760

**anti-Progesterone Receptor antibody****3** Images[Go to Product page](#)

## Overview

Quantity:	100 µL
Target:	Progesterone Receptor (PGR)
Reactivity:	Hormone
Host:	Rabbit
Clonality:	Polyclonal
Conjugate:	This Progesterone Receptor antibody is un-conjugated
Application:	Western Blotting (WB), Immunohistochemistry (Paraffin-embedded Sections) (IHC (p)), Immunofluorescence (IF), Immunocytochemistry (ICC)

## Product Details

Isotype:	IgG
Purification:	Progesterone receptor antibody was purified by antigen-affinity chromatography

## Target Details

Target:	Progesterone Receptor (PGR)
Alternative Name:	Progesterone Receptor ( <a href="#">PGR Products</a> )
Target Type:	Hormone
Molecular Weight:	99 kDa
Pathways:	<a href="#">Nuclear Receptor Transcription Pathway</a> , <a href="#">Intracellular Steroid Hormone Receptor Signaling Pathway</a> , <a href="#">Steroid Hormone Mediated Signaling Pathway</a> , <a href="#">Smooth Muscle Cell Migration</a>

## Application Details

Application Notes: IF:1:100-1:200, ICC:1:100-1:200, IHC-P: 1:100-1:500, WB: 1:500-1:3000

Restrictions: For Research Use only

## Handling

Format: Liquid

Concentration: Lot specific

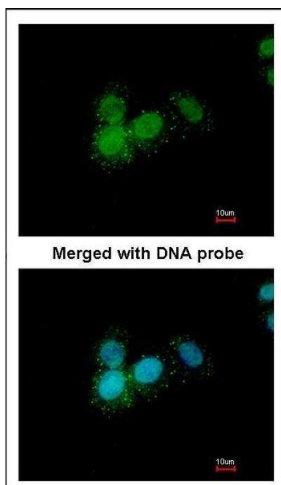
Buffer: as a concentrated solution containing 0.1M Tris, 0.1M Glyce, 20 % Glycerol ( pH 7.0). 0.01 % Thimerosal was added as a preservative.

Handling Advice: Avoid repeated freeze/thaw cycles

Storage: -20 °C

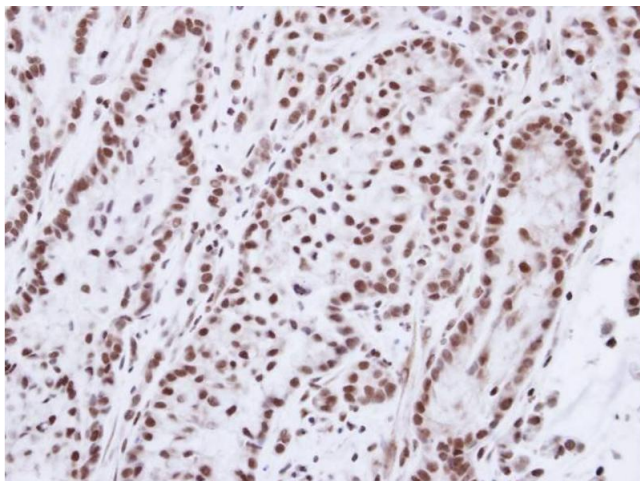
Storage Comment: Store at 4 °C for short term storage. Aliquot and store at -20 °C for long term storage.

## Images



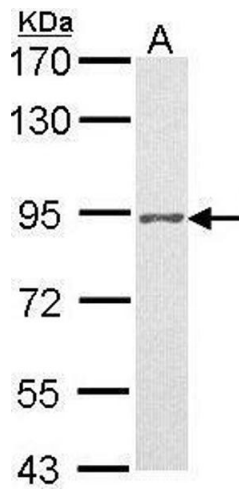
### Immunofluorescence

**Image 1.** Immunofluorescence analysis of paraformaldehyde-fixed A549, using Progesterone receptor antibody at 1:200 dilution.



### Immunohistochemistry

**Image 2.** Immunohistochemical staining of paraffin-embedded A549 xenograft using Progesterone receptor antibody at a dilution of 1:100



### Western Blotting

**Image 3.** Western blot analysis of 30 ug of whole cell lysate (A: H1299) using a 7.5 % SDS PAGE gel and Progesterone receptor antibody at a dilution of 1:500