

Datasheet for ABIN2152748

**anti-NXF1 antibody****3** Images[Go to Product page](#)

## Overview

Quantity:	100 µL
Target:	NXF1
Reactivity:	Human, Mouse
Host:	Rabbit
Clonality:	Polyclonal
Conjugate:	This NXF1 antibody is un-conjugated
Application:	Western Blotting (WB), Immunofluorescence (IF), Immunocytochemistry (ICC)

## Product Details

Immunogen:	TAP antibody was raised in rabbit using a recombinant fragment corresponding to a region within amino acids 449 and 619 of TAP
Sequence:	CSSGALDYDI PTTASENLYF Q
Isotype:	IgG
Purification:	TAP antibody was purified by Protein A chromatography

## Target Details

Target:	NXF1
Alternative Name:	nuclear RNA export factor 1 ( <a href="#">NXF1 Products</a> )
Molecular Weight:	70 kDa

## Application Details

Application Notes: IF:1:100-1:500, ICC:1:100-1:500, WB: 1:500-1:3000

Restrictions: For Research Use only

## Handling

Format: Liquid

Concentration: Lot specific

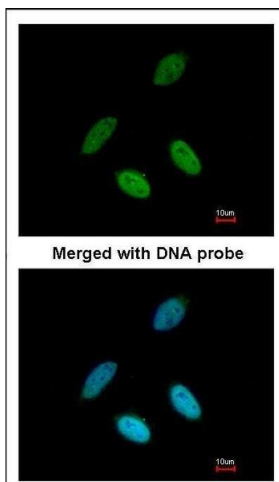
Buffer: as a concentrated solution containing 1X PBS, 1 % BSA, 20 % Glycerol (pH 7.0). 0.01 % Thimerosal was added as a preservative.

Handling Advice: Avoid repeated freeze/thaw cycles

Storage: -20 °C

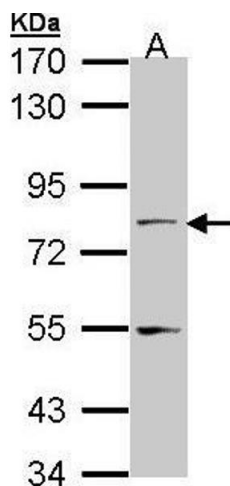
Storage Comment: Store at 4 °C for short term storage. Aliquot and store at -20 °C for long term storage.

## Images



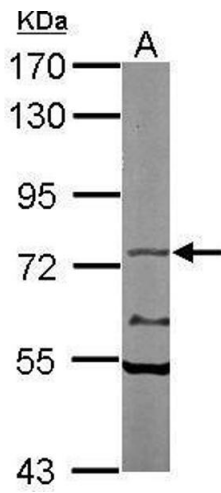
### Immunofluorescence

**Image 1.** Immunofluorescence analysis of paraformaldehyde-fixed HeLa, using TAP antibody at 1:200 dilution.



### Western Blotting

**Image 2.** Western blot analysis of 30 µg of whole cell lysate (A: A431) using a 7.5 % SDS PAGE gel and TAP antibody at a dilution of 1:1000



### Western Blotting

**Image 3.** Western blot analysis of 50 ug of whole cell lysate (A: Mouse brain) using a 7.5 % SDS PAGE gel and TAP antibody at a dilution of 1:1000