

Datasheet for ABIN2154876
anti-YIPF4 antibody

2 Images



[Go to Product page](#)

Overview

Quantity:	100 µL
Target:	YIPF4
Reactivity:	Aequorea victoria
Host:	Rabbit
Clonality:	Polyclonal
Conjugate:	This YIPF4 antibody is un-conjugated
Application:	Western Blotting (WB), Immunohistochemistry (Paraffin-embedded Sections) (IHC (p))

Product Details

Immunogen:	YIPF4 antibody was raised in rabbit using a recombinant protein fragment contain a sequence corresponding to a region within amino acids 1 and 152 of YIPF4
Isotype:	IgG
Purification:	YIPF4 antibody was purified by antigen-affinity chromatography

Target Details

Target:	YIPF4
Alternative Name:	YIPF4 (YIPF4 Products)
Molecular Weight:	27 kDa

Application Details

Application Notes: IHC-P: 1:100-1:500, WB: 1:500-1:3000

Restrictions: For Research Use only

Handling

Format: Liquid

Concentration: Lot specific

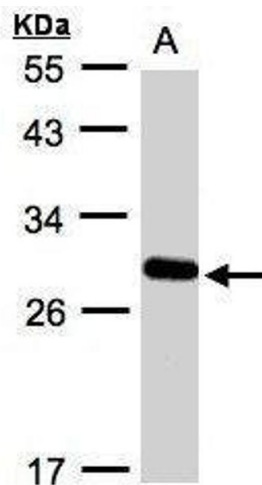
Buffer: as a concentrated solution containing 0.1M Tris, 0.1M Glyce, 10 % Glycerol (pH 7.0). 0.01 % Thimerosal was added as a preservative.

Handling Advice: Avoid repeated freeze/thaw cycles

Storage: -20 °C

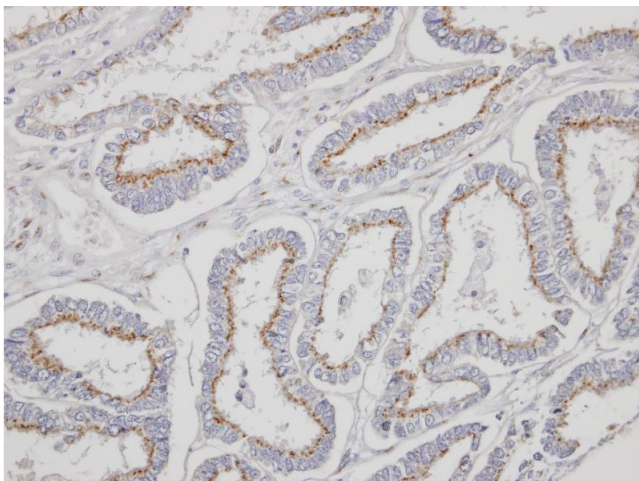
Storage Comment: Store at 4 °C for short term storage. Aliquot and store at -20 °C for long term storage.

Images



Western Blotting

Image 1. Western blot analysis of 30 ug whole cell lysate (A:A431) using a 12 % SDS PAGE gel and YIPF4 antibody at a dilution of 1:1000



Immunohistochemistry

Image 2. Immunohistochemical staining of paraffin-embedded Endometrial CA using YIPF4 antibody at a dilution of 1:500