

Datasheet for ABIN2169994
anti-ALDH3A1 antibody (AA 151-250)[Go to Product page](#)

1 Image

Overview

Quantity:	100 µL
Target:	ALDH3A1
Binding Specificity:	AA 151-250
Reactivity:	Mouse, Rat
Host:	Rabbit
Clonality:	Polyclonal
Conjugate:	This ALDH3A1 antibody is un-conjugated
Application:	Western Blotting (WB), ELISA, Immunohistochemistry (Paraffin-embedded Sections) (IHC (p)), Immunocytochemistry (ICC), Immunohistochemistry (Frozen Sections) (IHC (fro)), Immunofluorescence (Cultured Cells) (IF (cc)), Immunofluorescence (Paraffin-embedded Sections) (IF (p))

Product Details

Immunogen:	KLH conjugated synthetic peptide derived from human ALDH3A1
Isotype:	IgG
Cross-Reactivity:	Mouse, Rat
Predicted Reactivity:	Human,Pig,Horse
Purification:	Purified by Protein A.

Target Details

Target:	ALDH3A1
---------	---------

Target Details

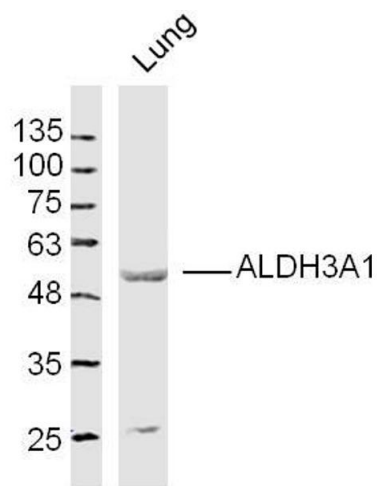
Alternative Name:	ALDH3A1 (ALDH3A1 Products)
Background:	<p>Synonyms: AHD 4, AHD C, Ahd4, AHDC, AL3A1_HUMAN, Aldehyde dehydrogenase 3, Aldehyde dehydrogenase 3 family member A1, Aldehyde dehydrogenase 3 family, member A1, Aldehyde dehydrogenase 3A1, Aldehyde dehydrogenase, Aldehyde dehydrogenase class 3, Aldehyde dehydrogenase dimeric NADP preferring, Aldehyde dehydrogenase family 3 member A1, Aldehyde dehydrogenase family 3 subfamily A1, Aldehyde dehydrogenase isozyme 3, Aldehyde dehydrogenase type III, Aldehyde dehydrogenase, dimeric NADP preferring, ALDH 3, ALDH 3A1, ALDH III, ALDH3 A1, ALDH3, ALDH3A 1, Aldh3a1, ALDHIII, dimeric NADP-preferring, MGC10406, Stomach aldehyde dehydrogenase, Tumor associated aldehyde dehydrogenase tumor ALDH.</p> <p>Background: ALDH3A1</p>

Application Details

Application Notes:	<p>WB 1:300-5000</p> <p>ELISA 1:500-1000</p> <p>IHC-P 1:200-400</p> <p>IHC-F 1:100-500</p> <p>IF(IHC-P) 1:50-200</p> <p>IF(IHC-F) 1:50-200</p> <p>IF(ICC) 1:50-200</p> <p>ICC 1:100-500</p>
Restrictions:	For Research Use only

Handling

Format:	Liquid
Concentration:	1 µg/µL
Buffer:	0.01M TBS(pH 7.4) with 1 % BSA, 0.02 % Proclin300 and 50 % Glycerol.
Preservative:	ProClin
Precaution of Use:	This product contains ProClin: a POISONOUS AND HAZARDOUS SUBSTANCE, which should be handled by trained staff only.
Storage:	4 °C,-20 °C
Storage Comment:	Shipped at 4°C. Store at -20°C for one year. Avoid repeated freeze/thaw cycles.
Expiry Date:	12 months



Western Blotting

Image 1. Mouse lung lysates probed with ALDH3A1 Polyclonal Antibody, Unconjugated at 1:300 dilution and 4°C overnight incubation. Followed by conjugated secondary antibody incubation at 1:10000 for 60 min at 37°C.