

Datasheet for ABIN2170103

anti-Casein alpha-S2 (CSN1S2) (AA 165-203) antibody[Go to Product page](#)**1** Image**2** Publications

Overview

Quantity:	100 µL
Target:	Casein alpha-S2 (CSN1S2)
Binding Specificity:	AA 165-203
Reactivity:	Cow, Mouse
Host:	Rabbit
Clonality:	Polyclonal
Conjugate:	Un-conjugated
Application:	Western Blotting (WB), ELISA, Immunohistochemistry (Frozen Sections) (IHC (fro)), Immunohistochemistry (Paraffin-embedded Sections) (IHC (p))

Product Details

Immunogen:	KLH conjugated synthetic peptide derived from cow Alpha s2 Casein
Isotype:	IgG
Cross-Reactivity:	Cow, Mouse
Predicted Reactivity:	Cow, Sheep
Purification:	Purified by Protein A.

Target Details

Target:	Casein alpha-S2 (CSN1S2)
Alternative Name:	Alpha s2 Casein (CSN1S2 Products)

Target Details

Background:	Synonyms: Alpha-S2-casein, CSN1S2 Background: Important role in the capacity of milk to transport calcium phosphate. Casocidin-I inhibits the growth of E.coli and S.carnosus.
Gene ID:	282209
UniProt:	P02663

Application Details

Application Notes:	WB 1:300-5000 ELISA 1:500-1000 IHC-P 1:200-400 IHC-F 1:100-500
Restrictions:	For Research Use only

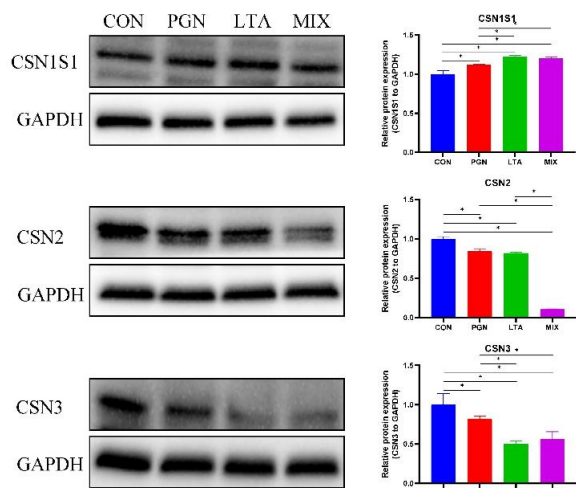
Handling

Format:	Liquid
Concentration:	1 µg/µL
Buffer:	0.01M TBS(pH 7.4) with 1 % BSA, 0.02 % Proclin300 and 50 % Glycerol.
Preservative:	ProClin
Precaution of Use:	This product contains ProClin: a POISONOUS AND HAZARDOUS SUBSTANCE, which should be handled by trained staff only.
Storage:	4 °C,-20 °C
Storage Comment:	Shipped at 4°C. Store at -20°C for one year. Avoid repeated freeze/thaw cycles.
Expiry Date:	12 months

Publications

Product cited in:	Luo, Zhao, Zhang, Gao, Wang, Hanigan, Zheng: "SESN2 negatively regulates cell proliferation and casein synthesis by inhibition the amino acid-mediated mTORC1 pathway in cow mammary epithelial cells." in: Scientific reports , Vol. 8, Issue 1, pp. 3912, (2019) (PubMed).
	Gao, Hu, Zheng, Wang: "Leucine and histidine independently regulate milk protein synthesis in bovine mammary epithelial cells via mTOR signaling pathway." in: Journal of Zhejiang

Images



Western Blotting

Image 1. The protein expression of the three caseins (CSN1S1, CSN2, and CSN3). The total protein was isolated to examine casein expression by Western Blot analysis, and the glyceraldehyde-3-phosphate dehydrogenase (GAPDH) was selected as a housekeeping protein. Quantitation of blots is representative of three independent experiments. Data represent the mean and standard deviation (n = 6), and the asterisk indicates statistical difference (* p < 0.05) between the indicated columns, based on one-way analysis of variance and Duncan's range test. CSN1S1, αS1-casein, CSN2, β-casein, CSN3, κ-casein, CON, control group, PGN, peptidoglycan group, LTA, lipoteichoic acid group, MIX, PGN + LTA group. - figure provided by CiteAb. Source: PMID32283626