

Datasheet for ABIN2170478
anti-BACE2 antibody (AA 101-200)[Go to Product page](#)

1 Image

Overview

Quantity:	100 µL
Target:	BACE2
Binding Specificity:	AA 101-200
Reactivity:	Rat
Host:	Rabbit
Clonality:	Polyclonal
Conjugate:	This BACE2 antibody is un-conjugated
Application:	ELISA, Immunocytochemistry (ICC), Immunohistochemistry (Paraffin-embedded Sections) (IHC (p)), Immunofluorescence (Cultured Cells) (IF (cc)), Immunofluorescence (Paraffin-embedded Sections) (IF (p)), Immunohistochemistry (Frozen Sections) (IHC (fro))

Product Details

Immunogen:	KLH conjugated synthetic peptide derived from human BACE2
Isotype:	IgG
Cross-Reactivity:	Rat
Predicted Reactivity:	Human, Mouse, Dog, Cow, Sheep, Pig
Purification:	Purified by Protein A.

Target Details

Target:	BACE2
---------	-------

Target Details

Alternative Name:	BACE2 (BACE2 Products)
Background:	<p>Synonyms: ASP1, BAE2, DRAP, AEPLC, ALP56, ASP21, CDA13, CEAP1, Beta-secretase 2, Aspartic-like protease 56 kDa, Aspartyl protease 1, Asp 1, Beta-site amyloid precursor protein cleaving enzyme 2, Beta-site APP cleaving enzyme 2, Down region aspartic protease, Memapsin-1, Membrane-associated aspartic protease 1, Theta-secretase, BACE2, UNQ418/PRO852</p> <p>Background: Responsible for the proteolytic processing of the amyloid precursor protein (APP). Cleaves APP, between residues 690 and 691, leading to the generation and extracellular release of beta-cleaved soluble APP, and a corresponding cell-associated C-terminal fragment which is later released by gamma-secretase. It has also been shown that it can cleave APP between residues 671 and 672.</p>
Gene ID:	25825
UniProt:	Q9Y5Z0

Application Details

Application Notes:	<p>ELISA 1:500-1000</p> <p>IHC-P 1:200-400</p> <p>IHC-F 1:100-500</p> <p>IF(IHC-P) 1:50-200</p> <p>IF(IHC-F) 1:50-200</p> <p>IF(ICC) 1:50-200</p> <p>ICC 1:100-500</p>
Restrictions:	For Research Use only

Handling

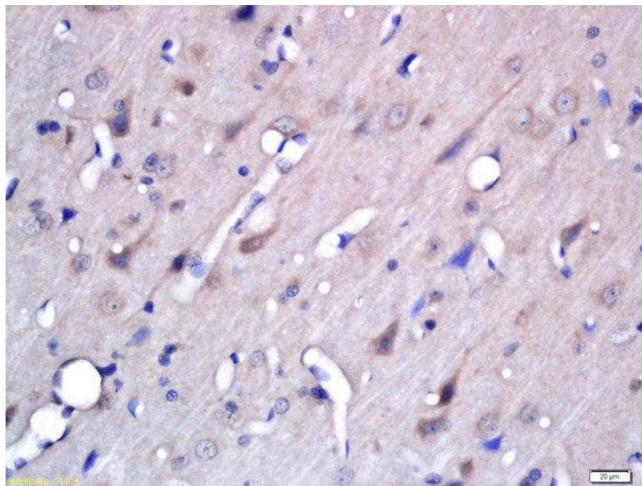
Format:	Liquid
Concentration:	1 µg/µL
Buffer:	0.01M TBS(pH 7.4) with 1 % BSA, 0.02 % Proclin300 and 50 % Glycerol.
Preservative:	ProClin
Precaution of Use:	This product contains ProClin: a POISONOUS AND HAZARDOUS SUBSTANCE, which should be handled by trained staff only.
Storage:	4 °C, -20 °C

Handling

Storage Comment: Shipped at 4°C. Store at -20°C for one year. Avoid repeated freeze/thaw cycles.

Expiry Date: 12 months

Images



Immunohistochemistry (Paraffin-embedded Sections)

Image 1. Formalin-fixed and paraffin embedded rat brain labeled with Rabbit Anti-BACE2 Polyclonal Antibody, Unconjugated (ABIN2170478) at 1:200 followed by conjugation to the secondary antibody and DAB staining