



[Go to Product page](#)

Datasheet for ABIN2170590  
**anti-BEND3 antibody (AA 501-600)**

1 Image

Overview

Quantity:	100 µL
Target:	BEND3
Binding Specificity:	AA 501-600
Reactivity:	Mouse
Host:	Rabbit
Clonality:	Polyclonal
Conjugate:	This BEND3 antibody is un-conjugated
Application:	ELISA, Immunofluorescence (Cultured Cells) (IF (cc)), Immunofluorescence (Paraffin-embedded Sections) (IF (p)), Immunohistochemistry (Paraffin-embedded Sections) (IHC (p)), Immunohistochemistry (Frozen Sections) (IHC (fro))

Product Details

Immunogen:	KLH conjugated synthetic peptide derived from human BEND3
Isotype:	IgG
Cross-Reactivity:	Mouse
Predicted Reactivity:	Human,Rat,Cow,Sheep,Horse,Rabbit
Purification:	Purified by Protein A.

Target Details

Target:	BEND3
---------	-------

## Target Details

---

Alternative Name:	BEND3 ( <a href="#">BEND3 Products</a> )
Background:	Synonyms: KIAA1553, BEN domain-containing protein 3, BEND3 Background: BEND3
Gene ID:	57673
UniProt:	<a href="#">Q5T5X7</a>

## Application Details

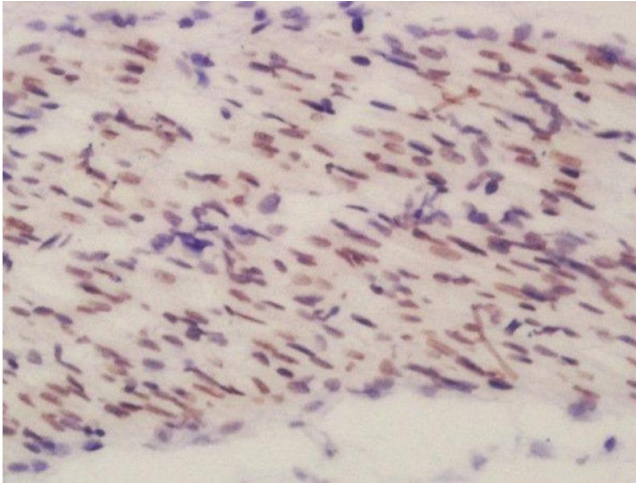
---

Application Notes:	ELISA 1:500-1000 IHC-P 1:200-400 IHC-F 1:100-500 IF(IHC-P) 1:50-200 IF(IHC-F) 1:50-200 IF(ICC) 1:50-200
Restrictions:	For Research Use only

## Handling

---

Format:	Liquid
Concentration:	1 µg/µL
Buffer:	0.01M TBS( pH 7.4) with 1 % BSA, 0.02 % Proclin300 and 50 % Glycerol.
Preservative:	ProClin
Precaution of Use:	This product contains ProClin: a POISONOUS AND HAZARDOUS SUBSTANCE, which should be handled by trained staff only.
Storage:	4 °C,-20 °C
Storage Comment:	Shipped at 4°C. Store at -20°C for one year. Avoid repeated freeze/thaw cycles.
Expiry Date:	12 months



#### Immunohistochemistry (Paraffin-embedded Sections)

**Image 1.** Formalin-fixed and paraffin embedded mouse embryo labeled with Rabbit Anti-BEND3 Polyclonal Antibody, Unconjugated (ABIN2170590) at 1:200 followed by conjugation to the secondary antibody and DAB staining