

Datasheet for ABIN2171107
anti-C1RL antibody (AA 101-200)[Go to Product page](#)

1 Image

Overview

Quantity:	100 µL
Target:	C1RL
Binding Specificity:	AA 101-200
Reactivity:	Mouse
Host:	Rabbit
Clonality:	Polyclonal
Conjugate:	This C1RL antibody is un-conjugated
Application:	Western Blotting (WB), ELISA, Immunohistochemistry (Paraffin-embedded Sections) (IHC (p)), Immunocytochemistry (ICC), Immunofluorescence (Cultured Cells) (IF (cc)), Immunofluorescence (Paraffin-embedded Sections) (IF (p)), Immunohistochemistry (Frozen Sections) (IHC (fro))

Product Details

Immunogen:	KLH conjugated synthetic peptide derived from human C1RL
Isotype:	IgG
Cross-Reactivity:	Mouse
Predicted Reactivity:	Human,Rat
Purification:	Purified by Protein A.

Target Details

Target:	C1RL
---------	------

Target Details

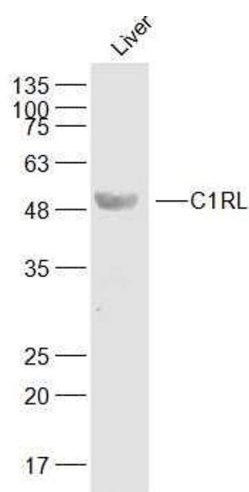
Alternative Name:	C1RL (C1RL Products)
Background:	Synonyms: C1r like protein, C1r like serine protease analog, C1r like serine protease analog protein, C1r LP, C1r-like protein, C1r-like serine protease analog protein, C1r-LP, C1rl, C1RL_HUMAN, C1RL1, C1RLP, CLSPa, complement C1r like proteinase, Complement C1r subcomponent-like protein, Complement component 1 r subcomponent like. Background: C1RL

Application Details

Application Notes:	WB 1:300-5000 ELISA 1:500-1000 IHC-P 1:200-400 IHC-F 1:100-500 IF(IHC-P) 1:50-200 IF(IHC-F) 1:50-200 IF(ICC) 1:50-200 ICC 1:100-500
Restrictions:	For Research Use only

Handling

Format:	Liquid
Concentration:	1 µg/µL
Buffer:	0.01M TBS(pH 7.4) with 1 % BSA, 0.02 % Proclin300 and 50 % Glycerol.
Preservative:	ProClin
Precaution of Use:	This product contains ProClin: a POISONOUS AND HAZARDOUS SUBSTANCE, which should be handled by trained staff only.
Storage:	4 °C, -20 °C
Storage Comment:	Shipped at 4°C. Store at -20°C for one year. Avoid repeated freeze/thaw cycles.
Expiry Date:	12 months



Western Blotting

Image 1. Mouse liver lysates probed with C1RL Polyclonal Antibody, Unconjugated at 1:500 dilution and 4°C overnight incubation. Followed by conjugated secondary antibody incubation at 1:10000 for 60 min at 37°C.