

Datasheet for ABIN2172318  
**anti-CCDC11 antibody (AA 330-380)**[Go to Product page](#)

## 4 Images

## Overview

Quantity:	100 µL
Target:	CCDC11
Binding Specificity:	AA 330-380
Reactivity:	Human, Mouse
Host:	Rabbit
Clonality:	Polyclonal
Conjugate:	This CCDC11 antibody is un-conjugated
Application:	Western Blotting (WB), Immunofluorescence (Cultured Cells) (IF (cc)), Immunofluorescence (Paraffin-embedded Sections) (IF (p)), ELISA, Immunohistochemistry (Frozen Sections) (IHC (fro)), Immunohistochemistry (Paraffin-embedded Sections) (IHC (p))

## Product Details

Immunogen:	KLH conjugated synthetic peptide derived from human CCDC11
Isotype:	IgG
Specificity:	Due to the similarity of this protein to RWD domain-containing protein 1, there is a chance that this antibody will react with this protein based on a 75 % non-sequential amino acid similarity.
Cross-Reactivity:	Human, Mouse, Rat
Predicted Reactivity:	Cow,Horse
Purification:	Purified by Protein A.

## Target Details

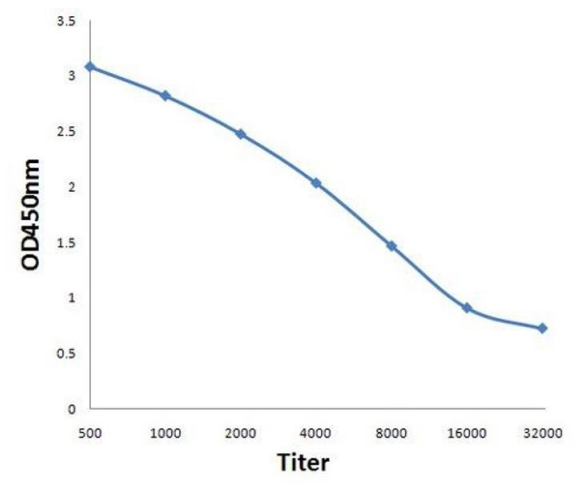
Target:	CCDC11
Alternative Name:	Ccdc11 ( <a href="#">CCDC11 Products</a> )
Background:	<p>Synonyms: HTX6, CCDC11, Coiled-coil domain-containing protein 11</p> <p>Background: CCDC11 is a 514 amino acid protein encode by a gene that maps to human chromosome 18q21.1. Encoding over 300 genes, chromosome 18 contains about 76 million bases. Trisomy 18, or Edwards syndrome, is the second most common trisomy after Downs syndrome. Symptoms of Edwards syndrome include low birth weight, a variety of physical development defects, heart deformations and breathing difficulty. Translocation between chromosome 18 and 14 is the most common translocation in cancers, and occurs in follicular lymphomas. Niemann-Pick disease, hereditary hemorrhagic telangiectasia and erythropoietic protoporphyria are associated with chromosome 18. The TGF modulators, Smad2, Smad4 and Smad7 are encoded by chromosome 18.</p>
Gene ID:	220136
UniProt:	<a href="#">Q96M91</a>

## Application Details

Application Notes:	WB 1:100-1000 IHC-P 1:100-500 IF(IHC-P) 1:50-200
Restrictions:	For Research Use only

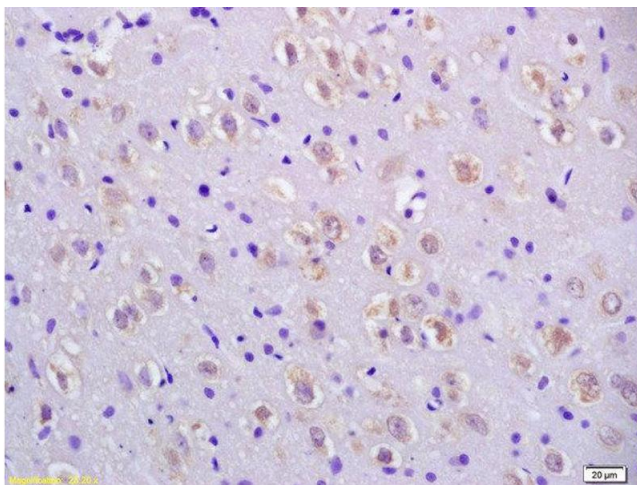
## Handling

Format:	Liquid
Concentration:	1 µg/µL
Buffer:	0.01M TBS( pH 7.4) with 1 % BSA, 0.02 % Proclin300 and 50 % Glycerol.
Preservative:	Sodium azide
Precaution of Use:	This product contains Sodium azide: a POISONOUS AND HAZARDOUS SUBSTANCE, which should be handled by trained staff only.
Storage:	4 °C,-20 °C
Storage Comment:	Shipped at 4°C. Store at -20°C for one year. Avoid repeated freeze/thaw cycles.
Expiry Date:	12 months



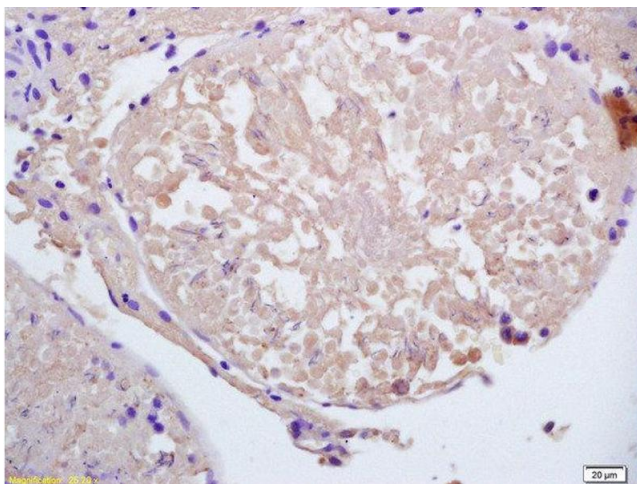
### ELISA

**Image 1.** Antigen: 0.2ug/100ul, Primary: Antiserum, 1:500, 1:1000, 1:2000, 1:4000, 1:8000, 1:16000, 1:32000, Secondary: HRP conjugated Goat-Anti-Rabbit IgG at 1: 5000, TMB staining, Read the data in MicroplateReader by 450nm



### Immunohistochemistry (Paraffin-embedded Sections)

**Image 2.** Formalin-fixed and paraffin embedded rat brain labeled with Anti-CCDC11 Polyclonal Antibody, Unconjugated at 1:200 followed by conjugation to the secondary antibody and DAB staining.



### Immunohistochemistry (Paraffin-embedded Sections)

**Image 3.** Formalin-fixed and paraffin embedded rat testis labeled with Anti-CCDC11 Polyclonal Antibody, Unconjugated at 1:200 followed by conjugation to the secondary antibody and DAB staining.

Please check the [product details page](#) for more images. Overall 4 images are available for ABIN2172318.