

Datasheet for ABIN2172414
anti-CCDC146 antibody[Go to Product page](#)

1 Image

Overview

Quantity:	100 µL
Target:	CCDC146
Reactivity:	Human, Rat, Mouse
Host:	Rabbit
Clonality:	Polyclonal
Conjugate:	This CCDC146 antibody is un-conjugated
Application:	Western Blotting (WB), ELISA, Immunofluorescence (Cultured Cells) (IF (cc)), Immunofluorescence (Paraffin-embedded Sections) (IF (p)), Immunohistochemistry (Paraffin- embedded Sections) (IHC (p)), Immunohistochemistry (Frozen Sections) (IHC (fro))

Product Details

Immunogen:	KLH conjugated synthetic peptide derived from Human CCDC146
Isotype:	IgG
Predicted Reactivity:	Human, Mouse, Rat, Dog, Cow, Sheep, Pig, Horse, Rabbit
Purification:	Purified by Protein A.

Target Details

Target:	CCDC146
Alternative Name:	Ccdc146 (CCDC146 Products)
Background:	Synonyms: KIAA1505, CC146_HUMAN, Ccdc146, Coiled-coil domain-containing protein 146. Background: CCDC146

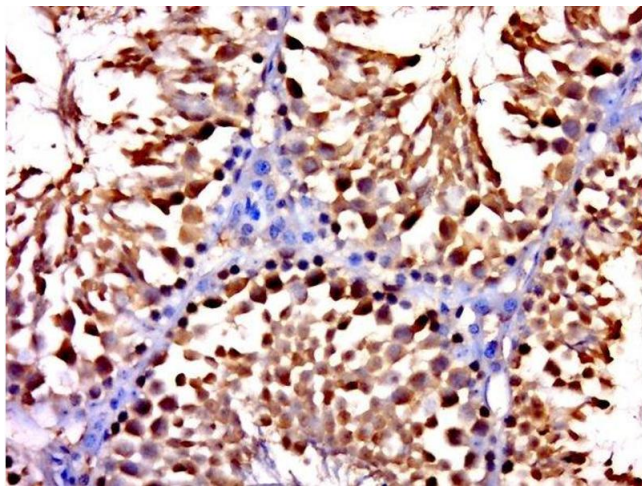
Application Details

Application Notes:	WB 1:100-1000 IHC-P 1:100-500 IF(IHC-P) 1:50-200
Restrictions:	For Research Use only

Handling

Format:	Liquid
Concentration:	1 µg/µL
Buffer:	0.01M TBS(pH 7.4) with 1 % BSA, 0.02 % Proclin300 and 50 % Glycerol.
Preservative:	Sodium azide
Precaution of Use:	This product contains Sodium azide: a POISONOUS AND HAZARDOUS SUBSTANCE, which should be handled by trained staff only.
Storage:	4 °C,-20 °C
Storage Comment:	Shipped at 4°C. Store at -20°C for one year. Avoid repeated freeze/thaw cycles.
Expiry Date:	12 months

Images



Immunohistochemistry (Paraffin-embedded Sections)

Image 1. Paraformaldehyde-fixed, paraffin embedded mouse testis, Antigen retrieval by boiling in sodium citrate buffer (pH6.0) for 15min, Block endogenous peroxidase by 3% hydrogen peroxide for 20 minutes, Blocking buffer (normal goat serum) at 37°C for 30min, Antibody incubation with CCDC146 Polyclonal Antibody, Unconjugated at 1:500 overnight at 4°C, followed by a conjugated secondary for 20 minutes and DAB staining.