

Datasheet for ABIN2172426
anti-CCDC147 antibody (AA 161-260)



[Go to Product page](#)

1 Image

Overview

Quantity:	100 µL
Target:	CCDC147
Binding Specificity:	AA 161-260
Reactivity:	Human
Host:	Rabbit
Clonality:	Polyclonal
Conjugate:	This CCDC147 antibody is un-conjugated
Application:	ELISA, Immunofluorescence (Cultured Cells) (IF (cc)), Immunofluorescence (Paraffin-embedded Sections) (IF (p)), Immunohistochemistry (Frozen Sections) (IHC (fro)), Immunohistochemistry (Paraffin-embedded Sections) (IHC (p))

Product Details

Immunogen:	KLH conjugated synthetic peptide derived from human CCDC147
Isotype:	IgG
Specificity:	May cross react with human TNIP3 due to 70 % sequence similarity.
Predicted Reactivity:	Human,Mouse,Rat,Dog,Cow,Sheep,Pig,Horse,Rabbit
Purification:	Purified by Protein A.

Target Details

Target:	CCDC147
---------	---------

Target Details

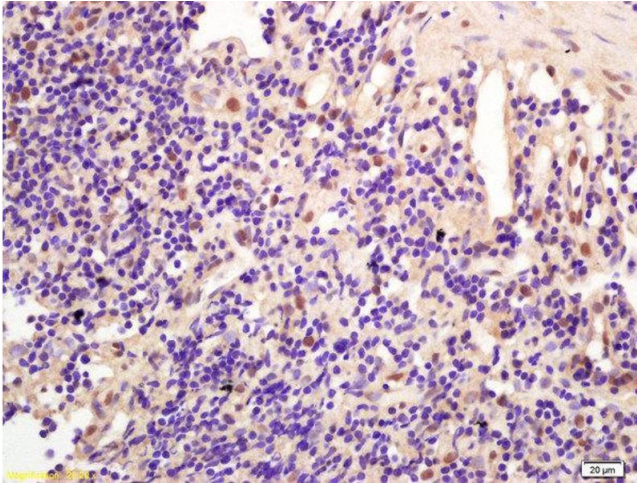
Alternative Name:	CCDC147 (CCDC147 Products)
Background:	Synonyms: CCDC147, C10orf80, bA127L20.4, bA127L20.5, bA554P13.1, Cilia- and flagella-associated protein 58, Coiled-coil domain-containing protein 147, CFAP58 Background: CCDC147
Gene ID:	159686
UniProt:	Q5T655

Application Details

Application Notes:	ELISA 1:500-1000 IHC-P 1:200-400 IHC-F 1:100-500 IF(IHC-P) 1:50-200 IF(IHC-F) 1:50-200 IF(ICC) 1:50-200
Restrictions:	For Research Use only

Handling

Format:	Liquid
Concentration:	1 µg/µL
Buffer:	0.01M TBS(pH 7.4) with 1 % BSA, 0.02 % Proclin300 and 50 % Glycerol.
Preservative:	ProClin
Precaution of Use:	This product contains ProClin: a POISONOUS AND HAZARDOUS SUBSTANCE, which should be handled by trained staff only.
Storage:	4 °C,-20 °C
Storage Comment:	Shipped at 4°C. Store at -20°C for one year. Avoid repeated freeze/thaw cycles.
Expiry Date:	12 months



Immunohistochemistry (Paraffin-embedded Sections)

Image 1. Formalin-fixed and paraffin embedded human gastric carcinoma labeled with Anti-CCDC147 Polyclonal Antibody, Unconjugated at 1:200 followed by conjugation to the secondary antibody and DAB staining