

Datasheet for ABIN2172510  
**anti-CCDC47 antibody (AA 375-483)**[Go to Product page](#)

## 1 Image

## Overview

Quantity:	100 µL
Target:	CCDC47
Binding Specificity:	AA 375-483
Reactivity:	Mouse
Host:	Rabbit
Clonality:	Polyclonal
Conjugate:	This CCDC47 antibody is un-conjugated
Application:	Western Blotting (WB), ELISA

## Product Details

Immunogen:	KLH conjugated synthetic peptide derived from human CCDC47
Isotype:	IgG
Cross-Reactivity:	Mouse
Predicted Reactivity:	Human,Rat,Dog,Cow,Sheep,Pig,Horse,Chicken,Rabbit
Purification:	Purified by Protein A.

## Target Details

Target:	CCDC47
Alternative Name:	CCDC47 ( <a href="#">CCDC47 Products</a> )
Background:	Synonyms: CCD47_HUMAN, CCDC 47, CCDC47, Coiled coil domain containing 47, Coiled coil

Target Details

	domain containing protein 47, Coiled-coil domain-containing protein 47, GK001, MSTP041. Background: CCDC47
--	---

Gene ID:	57003
----------	-------

Application Details

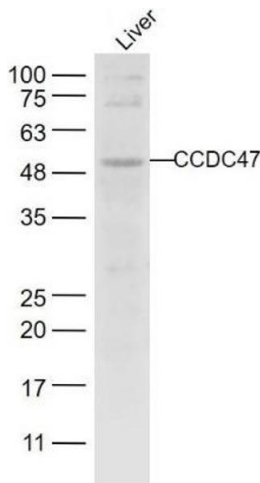
Application Notes:	WB 1:300-5000 ELISA 1:500-1000
--------------------	-----------------------------------

Restrictions:	For Research Use only
---------------	-----------------------

Handling

Format:	Liquid
Concentration:	1 µg/µL
Buffer:	0.01M TBS( pH 7.4) with 1 % BSA, 0.02 % Proclin300 and 50 % Glycerol.
Preservative:	ProClin
Precaution of Use:	This product contains ProClin: a POISONOUS AND HAZARDOUS SUBSTANCE, which should be handled by trained staff only.
Storage:	4 °C,-20 °C
Storage Comment:	Shipped at 4°C. Store at -20°C for one year. Avoid repeated freeze/thaw cycles.
Expiry Date:	12 months

Images



**Western Blotting**

**Image 1.** Mouse liver lysates probed with CCDC47 Polyclonal Antibody, unconjugated at 1:1000 overnight at 4°C followed by a conjugated secondary antibody for 60 minutes at 37°C.