



[Go to Product page](#)

Datasheet for ABIN2172703
anti-CD101 antibody (AA 51-150)

3 Images

Overview

Quantity:	100 µL
Target:	CD101
Binding Specificity:	AA 51-150
Reactivity:	Human
Host:	Rabbit
Clonality:	Polyclonal
Conjugate:	This CD101 antibody is un-conjugated
Application:	Flow Cytometry (FACS), Western Blotting (WB), Immunohistochemistry (Frozen Sections) (IHC (fro)), ELISA, Immunofluorescence (Cultured Cells) (IF (cc)), Immunofluorescence (Paraffin-embedded Sections) (IF (p)), Immunocytochemistry (ICC), Immunohistochemistry (Paraffin-embedded Sections) (IHC (p))

Product Details

Immunogen:	KLH conjugated synthetic peptide derived from human CD101
Isotype:	IgG
Cross-Reactivity:	Human
Predicted Reactivity:	Mouse,Rat
Purification:	Purified by Protein A.

Target Details

Target:	CD101
---------	-------

Target Details

Alternative Name: CD101 ([CD101 Products](#))

Background: Synonyms: V7, IGSF2, EWI-101, Immunoglobulin superfamily member 2, Cell surface glycoprotein V7, Glu-Trp-Ile EWI motif-containing protein 101, CD101, EWI101
Background: Plays a role as inhibitor of T-cells proliferation induced by CD3. Inhibits expression of IL2RA on activated T-cells and secretion of IL2. Inhibits tyrosine kinases that are required for IL2 production and cellular proliferation. Inhibits phospholipase C-gamma-1/PLCG1 phosphorylation and subsequent CD3-induced changes in intracellular free calcium. Prevents nuclear translocation of nuclear factor of activated T-cell to the nucleus. Plays a role in the inhibition of T-cell proliferation via IL10 secretion by cutaneous dendritic cells. May be a marker of CD4(+) CD56(+) leukemic tumor cells.

Gene ID: 9398

UniProt: [Q93033](#)

Application Details

Application Notes: WB 1:300-5000
ELISA 1:500-1000
FCM 1:20-100
IHC-P 1:200-400
IHC-F 1:100-500
IF(IHC-P) 1:50-200
IF(IHC-F) 1:50-200
IF(ICC) 1:50-200
ICC 1:100-500

Restrictions: For Research Use only

Handling

Format: Liquid

Concentration: 1 µg/µL

Buffer: 0.01M TBS(pH 7.4) with 1 % BSA, 0.02 % Proclin300 and 50 % Glycerol.

Preservative: ProClin

Precaution of Use: This product contains ProClin: a POISONOUS AND HAZARDOUS SUBSTANCE, which should be handled by trained staff only.

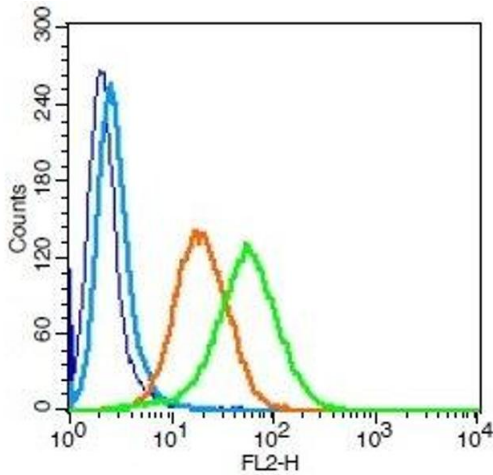
Handling

Storage: 4 °C, -20 °C

Storage Comment: Shipped at 4°C. Store at -20°C for one year. Avoid repeated freeze/thaw cycles.

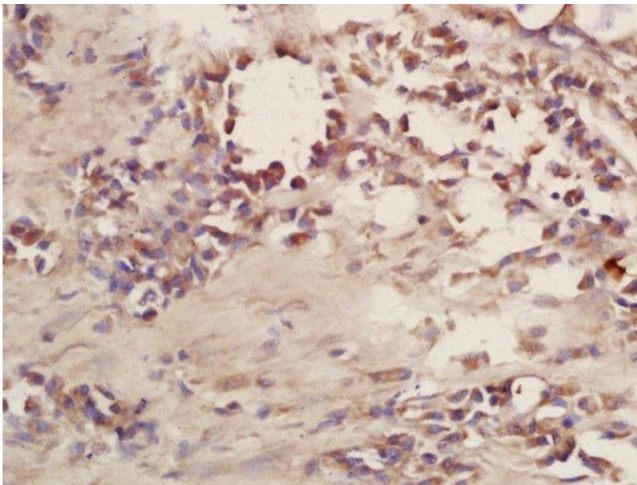
Expiry Date: 12 months

Images



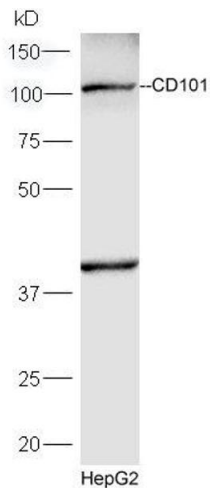
Flow Cytometry

Image 1. Human U937 cells probed with CD101 Polyclonal Antibody, Unconjugated (green) at 1:100 for 30 minutes followed by a PE conjugated secondary antibody compared to unstained cells (blue), secondary only (light blue), and isotype control (orange).



Immunohistochemistry (Paraffin-embedded Sections)

Image 2. Formalin-fixed and paraffin embedded human lung carcinoma labeled with Rabbit Anti-CD101 Polyclonal Antibody, Unconjugated (ABIN2172703) at 1:200 followed by conjugation to the secondary antibody and DAB staining



Western Blotting

Image 3. HepG2 lysates probed with Rabbit Anti-CD101 Polyclonal Antibody, Unconjugated (ABIN2172703) at 1:300 overnight at 4 °C. Followed by conjugation to secondary antibody at 1:5000 for 90 min at 37 °C.