

Datasheet for ABIN2172819
anti-CDK2 antibody (AA 1-100)[Go to Product page](#)

2 Images

4 Publications

Overview

Quantity:	100 µL
Target:	CDK2
Binding Specificity:	AA 1-100
Reactivity:	Human, Rat
Host:	Rabbit
Clonality:	Polyclonal
Conjugate:	This CDK2 antibody is un-conjugated
Application:	Western Blotting (WB), ELISA, Immunohistochemistry (Paraffin-embedded Sections) (IHC (p)), Immunofluorescence (Paraffin-embedded Sections) (IF (p)), Immunofluorescence (Cultured Cells) (IF (cc)), Immunohistochemistry (Frozen Sections) (IHC (fro))

Product Details

Immunogen:	KLH conjugated synthetic peptide derived from human CDK2
Isotype:	IgG
Cross-Reactivity:	Human, Rat
Predicted Reactivity:	Mouse,Cow,Pig,Horse,Rabbit,Guinea Pig
Purification:	Purified by Protein A.

Target Details

Target:	CDK2
---------	------

Target Details

Alternative Name:	CDK2 (CDK2 Products)
Background:	<p>Synonyms: CDKN2, p33(CDK2), Cyclin-dependent kinase 2, Cell division protein kinase 2, p33 protein kinase, CDK2</p> <p>Background: The protein encoded by this gene is a member of the Ser/Thr protein kinase family. This protein kinase is highly similar to the gene products of <i>S. cerevisiae</i> cdc28, and <i>S. pombe</i> cdc2. It is a catalytic subunit of the cyclin-dependent protein kinase complex, whose activity is restricted to the G1-S phase, and essential for cell cycle G1/S phase transition. This protein associates with and regulated by the regulatory subunits of the complex including cyclin A or E, CDK inhibitor p21Cip1 (CDKN1A) and p27Kip1 (CDKN1B). Its activity is also regulated by its protein phosphorylation. Two alternatively spliced variants and multiple transcription initiation sites of this gene have been reported. [provided by RefSeq, Jul 2008].</p>
Gene ID:	1017
UniProt:	P24941
Pathways:	PI3K-Akt Signaling , Cell Division Cycle , Mitotic G1-G1/S Phases , DNA Replication , M Phase , Synthesis of DNA

Application Details

Application Notes:	WB 1:300-5000 ELISA 1:500-1000 IHC-P 1:200-400 IHC-F 1:100-500 IF(IHC-P) 1:50-200 IF(IHC-F) 1:50-200 IF(ICC) 1:50-200
Restrictions:	For Research Use only

Handling

Format:	Liquid
Concentration:	1 µg/µL
Buffer:	0.01M TBS(pH 7.4) with 1 % BSA, 0.02 % Proclin300 and 50 % Glycerol.
Preservative:	ProClin
Precaution of Use:	This product contains ProClin: a POISONOUS AND HAZARDOUS SUBSTANCE, which should be

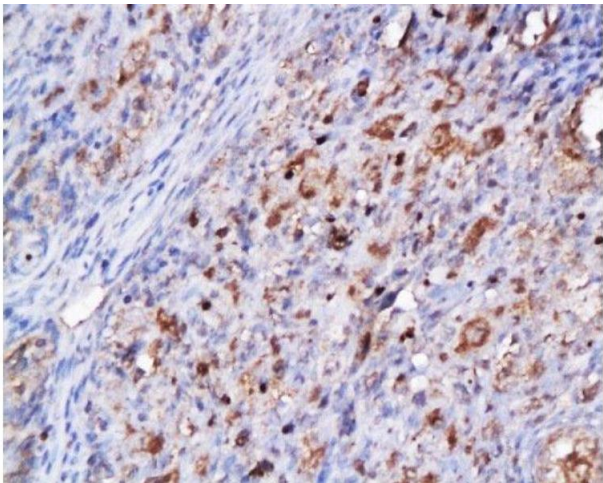
Handling

	handled by trained staff only.
Storage:	4 °C,-20 °C
Storage Comment:	Shipped at 4°C. Store at -20°C for one year. Avoid repeated freeze/thaw cycles.
Expiry Date:	12 months

Publications

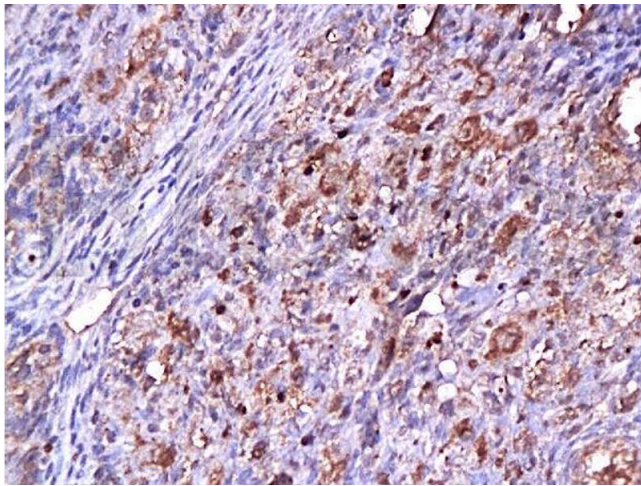
Product cited in:	<p>Ghate, Das, Chaudhuri, Panja, Mandal: "Sundew plant, a potential source of anti-inflammatory agents, selectively induces G2/M arrest and apoptosis in MCF-7 cells through upregulation of p53 and Bax/Bcl-2 ratio." in: Cell death discovery, Vol. 2, pp. 15062, (2016) (PubMed).</p> <p>Chen, Wang, Wang, Huang, Zhang: "STAT1 inhibits human hepatocellular carcinoma cell growth through induction of p53 and Fbxw7." in: Cancer cell international, Vol. 15, pp. 111, (2015) (PubMed).</p> <p>Ghate, Chaudhuri, Sarkar, Sajem, Panja, Rout, Mandal: "An antioxidant extract of tropical lichen, Parmotrema reticulatum, induces cell cycle arrest and apoptosis in breast carcinoma cell line MCF-7." in: PLoS ONE, Vol. 8, Issue 12, pp. e82293, (2013) (PubMed).</p>
-------------------	--

Images



Immunohistochemistry (Paraffin-embedded Sections)

Image 1.



Immunohistochemistry (Paraffin-embedded Sections)

Image 2.