

Datasheet for ABIN2173059  
**anti-CISD1 antibody (AA 51-108)**

## 3 Images

[Go to Product page](#)

## Overview

Quantity:	100 µL
Target:	CISD1
Binding Specificity:	AA 51-108
Reactivity:	Rat
Host:	Rabbit
Clonality:	Polyclonal
Conjugate:	This CISD1 antibody is un-conjugated
Application:	Western Blotting (WB), ELISA, Immunofluorescence (Cultured Cells) (IF (cc)), Immunofluorescence (Paraffin-embedded Sections) (IF (p)), Immunohistochemistry (Paraffin- embedded Sections) (IHC (p)), Immunohistochemistry (Frozen Sections) (IHC (fro)), Immunocytochemistry (ICC)

## Product Details

Immunogen:	KLH conjugated synthetic peptide derived from human CISD1
Isotype:	IgG
Cross-Reactivity:	Rat
Predicted Reactivity:	Human,Mouse,Dog,Cow,Sheep,Horse,Rabbit
Purification:	Purified by Protein A.

## Target Details

Target:	CISD1
---------	-------

Target Details

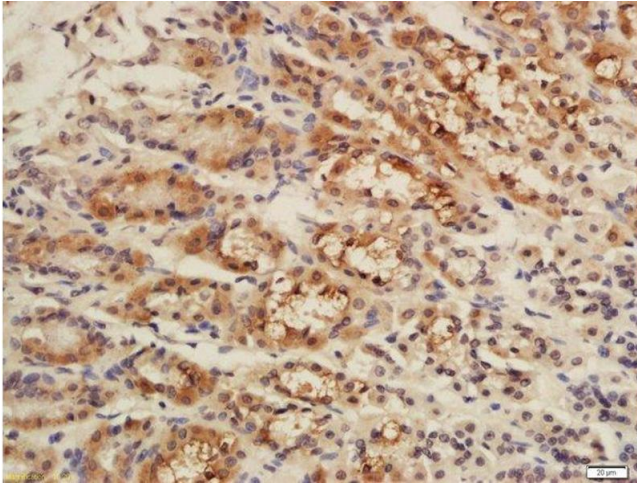
Alternative Name:	CISD1 ( <a href="#">CISD1 Products</a> )
Background:	<p>Synonyms: ZCD1, MDS029, C10orf70, mitoNEET, CDGSH iron-sulfur domain-containing protein 1, CISD1</p> <p>Background: Plays a key role in regulating maximal capacity for electron transport and oxidative phosphorylation (By similarity). May be involved in Fe-S cluster shuttling and/or in redox reactions.</p>
Gene ID:	55847
UniProt:	<a href="#">Q9NZ45</a>

Application Details

Application Notes:	<p>WB 1:300-5000</p> <p>ELISA 1:500-1000</p> <p>IHC-P 1:200-400</p> <p>IHC-F 1:100-500</p> <p>IF(IHC-P) 1:50-200</p> <p>IF(IHC-F) 1:50-200</p> <p>IF(ICC) 1:50-200</p> <p>ICC 1:100-500</p>
Restrictions:	For Research Use only

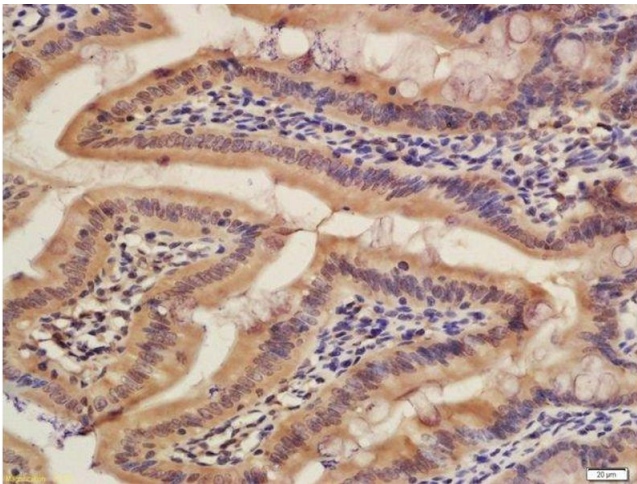
Handling

Format:	Liquid
Concentration:	1 µg/µL
Buffer:	0.01M TBS( pH 7.4) with 1 % BSA, 0.02 % Proclin300 and 50 % Glycerol.
Preservative:	ProClin
Precaution of Use:	This product contains ProClin: a POISONOUS AND HAZARDOUS SUBSTANCE, which should be handled by trained staff only.
Storage:	4 °C,-20 °C
Storage Comment:	Shipped at 4°C. Store at -20°C for one year. Avoid repeated freeze/thaw cycles.
Expiry Date:	12 months



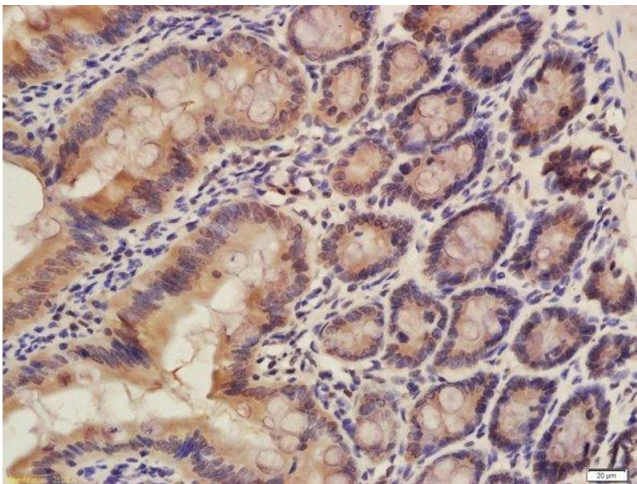
#### Immunohistochemistry (Paraffin-embedded Sections)

**Image 1.** Formalin-fixed and paraffin embedded rat stomach labeled with Rabbit Anti-CISD1 Polyclonal Antibody, Unconjugated (ABIN2173059) at 1:200 followed by conjugation to the secondary antibody and DAB staining



#### Immunohistochemistry (Paraffin-embedded Sections)

**Image 2.** Formalin-fixed and paraffin embedded rat colon labeled with Rabbit Anti-CISD1 Polyclonal Antibody, Unconjugated (ABIN2173059) at 1:200 followed by conjugation to the secondary antibody and DAB staining



#### Immunohistochemistry (Paraffin-embedded Sections)

**Image 3.** Formalin-fixed and paraffin embedded rat colon labeled with Rabbit Anti-CISD1 Polyclonal Antibody, Unconjugated (ABIN2173059) at 1:200 followed by conjugation to the secondary antibody and DAB staining