

Datasheet for ABIN2173099
anti-CLDN10 antibody (AA 151-228)[Go to Product page](#)

1 Image

Overview

Quantity:	100 µL
Target:	CLDN10
Binding Specificity:	AA 151-228
Reactivity:	Human
Host:	Rabbit
Clonality:	Polyclonal
Conjugate:	This CLDN10 antibody is un-conjugated
Application:	ELISA, Immunofluorescence (Cultured Cells) (IF (cc)), Immunofluorescence (Paraffin-embedded Sections) (IF (p)), Immunohistochemistry (Frozen Sections) (IHC (fro)), Immunohistochemistry (Paraffin-embedded Sections) (IHC (p)), Immunocytochemistry (ICC)

Product Details

Immunogen:	KLH conjugated synthetic peptide derived from human Claudin 10
Isotype:	IgG
Cross-Reactivity:	Human
Predicted Reactivity:	Mouse,Rat,Cow,Sheep,Pig,Horse,Rabbit
Purification:	Purified by Protein A.

Target Details

Target:	CLDN10
---------	--------

Target Details

Alternative Name:	Claudin 10 (CLDN10 Products)
Background:	<p>Synonyms: Claudin-10, Claudin10, CLD10_HUMAN, CLDN 10, CLDN10, CLDN10 protein, CPETRL 3, CPETRL3, HGNC:2033, OSP L, OSP like protein, OSP-like protein, OSPL.</p> <p>Background: The claudin superfamily consists of many structurally related proteins in humans. These proteins are important structural and functional components of tight junctions in paracellular transport. Claudins are located in both epithelial and endothelial cells in all tight junction-bearing tissues. Three classes of proteins are known to localize to tight junctions, including the claudins, Occludin and junction adhesion molecules. Claudins, which consist of four transmembrane domains and two extracellular loops, make up tight junction strands. Claudin expression is often highly restricted to specific regions of different tissues and may have an important role in transcellular transport through tight junctions. Claudin-10 is a 228 amino acid multi-pass membrane protein that belongs to the claudin family and plays an important role in cell-adhesion activity and tight junction-specific events.</p>
Pathways:	Hepatitis C

Application Details

Application Notes:	ELISA 1:500-1000 IHC-P 1:200-400 IHC-F 1:100-500 IF(IHC-P) 1:50-200 IF(IHC-F) 1:50-200 IF(ICC) 1:50-200 ICC 1:100-500
Restrictions:	For Research Use only

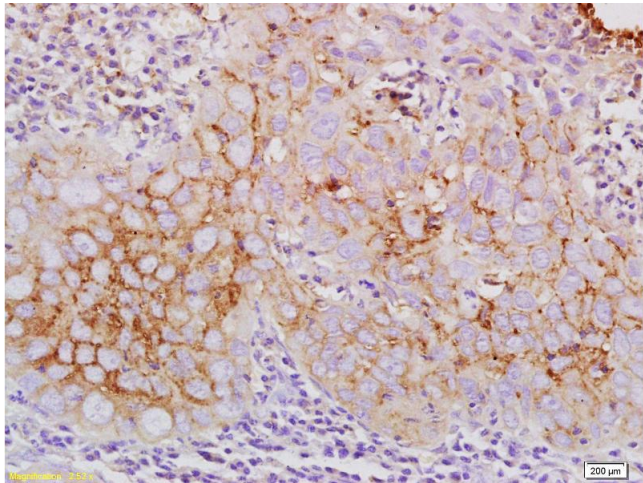
Handling

Format:	Liquid
Concentration:	1 µg/µL
Buffer:	0.01M TBS(pH 7.4) with 1 % BSA, 0.02 % Proclin300 and 50 % Glycerol.
Preservative:	ProClin
Precaution of Use:	This product contains ProClin: a POISONOUS AND HAZARDOUS SUBSTANCE, which should be handled by trained staff only.

Handling

Storage:	4 °C,-20 °C
Storage Comment:	Shipped at 4°C. Store at -20°C for one year. Avoid repeated freeze/thaw cycles.
Expiry Date:	12 months

Images



Immunohistochemistry (Paraffin-embedded Sections)

Image 1. Paraformaldehyde-fixed, paraffin embedded human laryngeal cancer Antigen retrieval by boiling in sodium citrate buffer (pH6.0) for 15min Block endogenous peroxidase by 3% hydrogen peroxide for 20 minutes Blocking buffer (normal goat serum) at 37°C for 30min Antibody incubation with Claudin 10 Polyclonal Antibody, Unconjugated at 1:200 overnight at 4°C, DAB staining.