

Datasheet for ABIN2173147
anti-Claudin 17 antibody (AA 29-81)[Go to Product page](#)

1 Image

Overview

Quantity:	100 µL
Target:	Claudin 17 (CLDN17)
Binding Specificity:	AA 29-81
Reactivity:	Human
Host:	Rabbit
Clonality:	Polyclonal
Conjugate:	This Claudin 17 antibody is un-conjugated
Application:	Western Blotting (WB), Immunofluorescence (Cultured Cells) (IF (cc)), Immunofluorescence (Paraffin-embedded Sections) (IF (p)), ELISA, Immunohistochemistry (Paraffin-embedded Sections) (IHC (p)), Immunohistochemistry (Frozen Sections) (IHC (fro)), Immunocytochemistry (ICC)

Product Details

Immunogen:	KLH conjugated synthetic peptide derived from human Claudin 17
Isotype:	IgG
Cross-Reactivity:	Human
Predicted Reactivity:	Horse
Purification:	Purified by Protein A.

Target Details

Target:	Claudin 17 (CLDN17)
---------	---------------------

Target Details

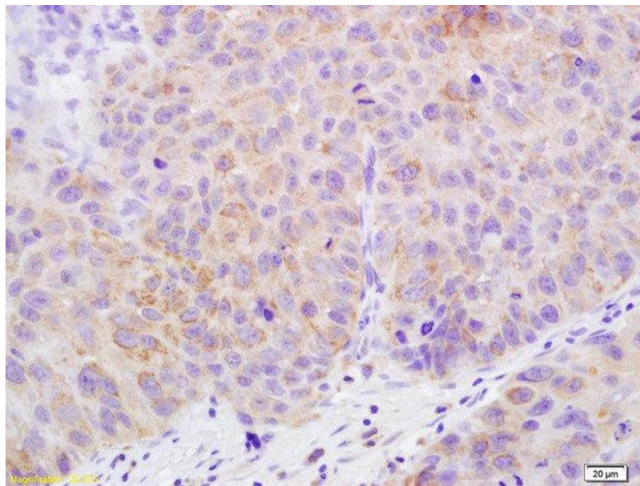
Alternative Name:	Claudin 17 (CLDN17 Products)
Background:	Synonyms: Claudin-17, CLDN17, UNQ758/PRO1489 Background: Plays a major role in tight junction-specific obliteration of the intercellular space, through calcium-independent cell-adhesion activity.
Gene ID:	26285
UniProt:	P56750
Pathways:	Cell-Cell Junction Organization , Hepatitis C

Application Details

Application Notes:	WB 1:300-5000 ELISA 1:500-1000 IHC-P 1:200-400 IHC-F 1:100-500 IF(IHC-P) 1:50-200 IF(IHC-F) 1:50-200 IF(ICC) 1:50-200 ICC 1:100-500
Restrictions:	For Research Use only

Handling

Format:	Liquid
Concentration:	1 µg/µL
Buffer:	0.01M TBS(pH 7.4) with 1 % BSA, 0.02 % Proclin300 and 50 % Glycerol.
Preservative:	ProClin
Precaution of Use:	This product contains ProClin: a POISONOUS AND HAZARDOUS SUBSTANCE, which should be handled by trained staff only.
Storage:	4 °C,-20 °C
Storage Comment:	Shipped at 4°C. Store at -20°C for one year. Avoid repeated freeze/thaw cycles.
Expiry Date:	12 months



Immunohistochemistry (Paraffin-embedded Sections)

Image 1. Formalin-fixed and paraffin embedded human bladder carcinoma labeled with Rabbit Anti-Claudin 17 Polyclonal Antibody, Unconjugated at 1:200 followed by conjugation to the secondary antibody and DAB staining