

Datasheet for ABIN2173171  
**anti-Claudin 19 antibody (AA 21-120)**[Go to Product page](#)

## 1 Image

## Overview

Quantity:	100 µL
Target:	Claudin 19 (CLDN19)
Binding Specificity:	AA 21-120
Reactivity:	Mouse
Host:	Rabbit
Clonality:	Polyclonal
Conjugate:	This Claudin 19 antibody is un-conjugated
Application:	ELISA, Immunofluorescence (Cultured Cells) (IF (cc)), Immunofluorescence (Paraffin-embedded Sections) (IF (p)), Immunocytochemistry (ICC), Immunohistochemistry (Frozen Sections) (IHC (fro)), Immunohistochemistry (Paraffin-embedded Sections) (IHC (p))

## Product Details

Immunogen:	KLH conjugated synthetic peptide derived from human Claudin 19
Isotype:	IgG
Cross-Reactivity:	Mouse
Predicted Reactivity:	Human,Rat,Cow,Sheep,Horse
Purification:	Purified by Protein A.

## Target Details

Target:	Claudin 19 (CLDN19)
---------	---------------------

## Target Details

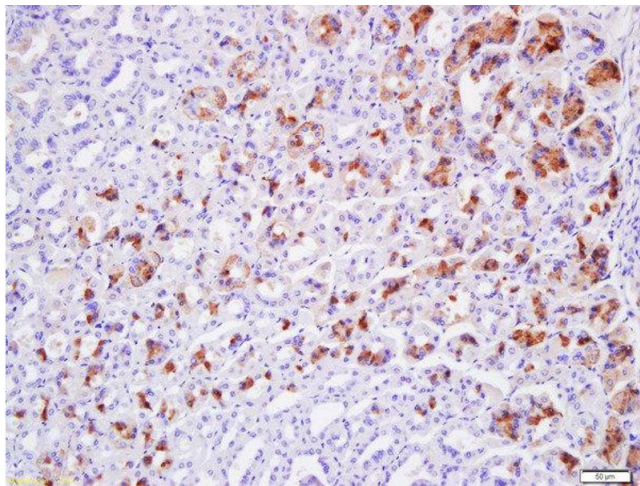
Alternative Name:	Claudin 19 ( <a href="#">CLDN19 Products</a> )
Background:	Synonyms: HOMG5, Claudin-19, CLDN19 Background: Plays a major role in tight junction-specific obliteration of the intercellular space, through calcium-independent cell-adhesion activity.
Gene ID:	149461
UniProt:	<a href="#">Q8N6F1</a>
Pathways:	<a href="#">Cell-Cell Junction Organization</a> , <a href="#">Hepatitis C</a>

## Application Details

Application Notes:	ELISA 1:500-1000 IHC-P 1:200-400 IHC-F 1:100-500 IF(IHC-P) 1:50-200 IF(IHC-F) 1:50-200 IF(ICC) 1:50-200 ICC 1:100-500
Restrictions:	For Research Use only

## Handling

Format:	Liquid
Concentration:	1 µg/µL
Buffer:	0.01M TBS( pH 7.4) with 1 % BSA, 0.02 % Proclin300 and 50 % Glycerol.
Preservative:	ProClin
Precaution of Use:	This product contains ProClin: a POISONOUS AND HAZARDOUS SUBSTANCE, which should be handled by trained staff only.
Storage:	4 °C,-20 °C
Storage Comment:	Shipped at 4°C. Store at -20°C for one year. Avoid repeated freeze/thaw cycles.
Expiry Date:	12 months



#### Immunohistochemistry (Paraffin-embedded Sections)

**Image 1.** Formalin-fixed and paraffin embedded mouse stomach tissue labeled with Anti-Claudin 19 Polyclonal Antibody, Unconjugated (ABIN2173171) at 1:200 followed by conjugation to the secondary antibody and DAB staining