

Datasheet for ABIN2173285
anti-Cofilin antibody (pTyr140)



[Go to Product page](#)

1 Image

Overview

Quantity:	100 µL
Target:	Cofilin (CFL1)
Binding Specificity:	pTyr140
Reactivity:	Human, Mouse, Rat
Host:	Rabbit
Clonality:	Polyclonal
Conjugate:	This Cofilin antibody is un-conjugated
Application:	ELISA, Immunohistochemistry (Paraffin-embedded Sections) (IHC (p)), Flow Cytometry (FACS), Immunofluorescence (Cultured Cells) (IF (cc)), Immunofluorescence (Paraffin-embedded Sections) (IF (p)), Immunohistochemistry (Frozen Sections) (IHC (fro))

Product Details

Immunogen:	KLH conjugated synthetic phosphopeptide derived from human Cofilin around the phosphorylation site of Tyr140
Isotype:	IgG
Cross-Reactivity:	Human, Mouse, Rat
Predicted Reactivity:	Cow, Sheep, Pig
Purification:	Purified by Protein A.

Target Details

Target:	Cofilin (CFL1)
---------	----------------

Target Details

Alternative Name:	Cofilin (CFL1 Products)
Background:	<p>Synonyms: CFL, cofilin, HEL-S-15, Cofilin-1, 18 kDa phosphoprotein, p18, Cofilin, non-muscle isoform, CFL1</p> <p>Background: Binds to F-actin and exhibits pH -sensitive F-actin depolymerizing activity. Regulates actin cytoskeleton dynamics. Important for normal progress through mitosis and normal cytokinesis. Plays a role in the regulation of cell morphology and cytoskeletal organization. Required for the up-regulation of atypical chemokine receptor ACKR2 from endosomal compartment to cell membrane, increasing its efficiency in chemokine uptake and degradation.</p>
Gene ID:	1072
UniProt:	P23528
Pathways:	Regulation of Cell Size, Tube Formation, Protein targeting to Nucleus, CXCR4-mediated Signaling Events

Application Details

Application Notes:	<p>ELISA 1:500-1000</p> <p>FCM 1:20-100</p> <p>IHC-P 1:200-400</p> <p>IHC-F 1:100-500</p> <p>IF(IHC-P) 1:50-200</p> <p>IF(IHC-F) 1:50-200</p> <p>IF(ICC) 1:50-200</p>
Restrictions:	For Research Use only

Handling

Format:	Liquid
Concentration:	1 µg/µL
Buffer:	0.01M TBS(pH 7.4) with 1 % BSA, 0.02 % Proclin300 and 50 % Glycerol.
Preservative:	ProClin
Precaution of Use:	This product contains ProClin: a POISONOUS AND HAZARDOUS SUBSTANCE, which should be handled by trained staff only.

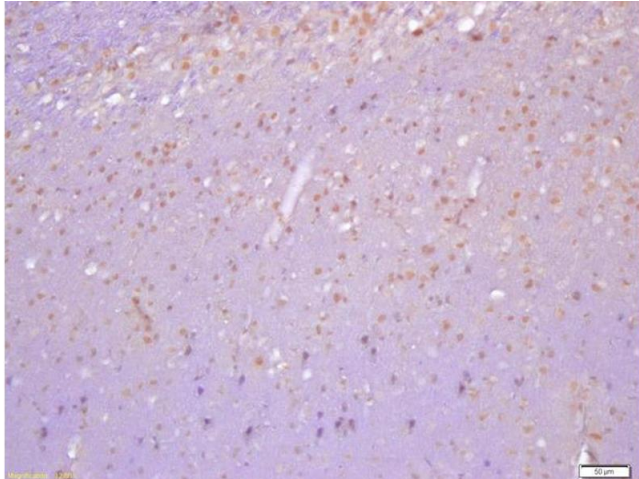
Handling

Storage: 4 °C, -20 °C

Storage Comment: Shipped at 4°C. Store at -20°C for one year. Avoid repeated freeze/thaw cycles.

Expiry Date: 12 months

Images



Immunohistochemistry (Paraffin-embedded Sections)

Image 1. Formalin-fixed and paraffin embedded rat brain labeled with Anti-Phospho-Cofilin/CFL1(Tyr140)Polyclonal Antibody, Unconjugated at 1:200 followed by conjugation to the secondary antibody and DAB staining