

Datasheet for ABIN2173321  
**anti-COMMD9 antibody (AA 11-100)**



[Go to Product page](#)

1 Image

## Overview

|                      |  |
|----------------------|--|
| Quantity:            | 100 µL   |
| Target:              | COMMD9   |
| Binding Specificity: | AA 11-100  |
| Reactivity:          | Mouse  |
| Host:                | Rabbit   |
| Clonality:           | Polyclonal   |
| Conjugate:           | This COMMD9 antibody is un-conjugated  |
| Application:         | ELISA, Western Blotting (WB), Immunofluorescence (Cultured Cells) (IF (cc)), Immunofluorescence (Paraffin-embedded Sections) (IF (p)), Immunohistochemistry (Frozen Sections) (IHC (fro)), Immunohistochemistry (Paraffin-embedded Sections) (IHC (p)) |

## Product Details

|                       |  |
|-----------------------|--|
| Immunogen:            | KLH conjugated synthetic peptide derived from human COMMD9 |
| Isotype:              | IgG  |
| Cross-Reactivity:     | Mouse  |
| Predicted Reactivity: | Human,Rat,Dog,Cow,Sheep,Pig                                |
| Purification:         | Purified by Protein A.                                     |

## Target Details

|         |        |
|---------|--------|
| Target: | COMMD9 |
|---------|--------|

## Target Details

---

|                   |   |
|-------------------|---|
| Alternative Name: | Commd9 ( <a href="#">COMMD9 Products</a> )  |
| Background:       | Synonyms: COMD9_HUMAN, COMM domain-containing protein 9, COMMD9, HSPC166.<br>Background: COMMD9 |
| Gene ID:          | 29099   |

## Application Details

---

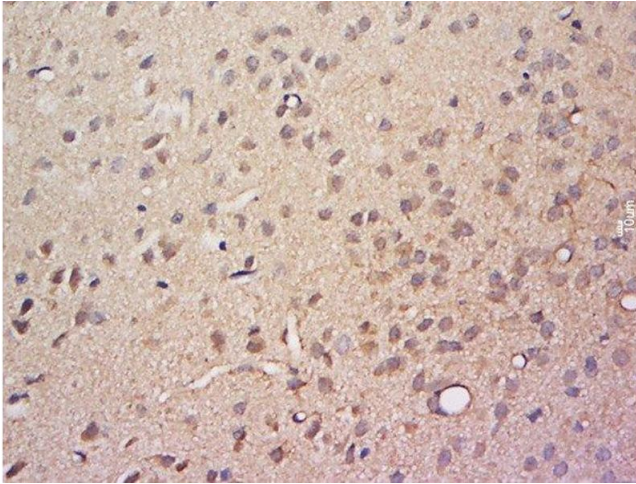
|                    |   |
|--------------------|---|
| Application Notes: | WB 1:300-5000<br>ELISA 1:500-1000<br>IHC-P 1:200-400<br>IHC-F 1:100-500<br>IF(IHC-P) 1:50-200<br>IF(IHC-F) 1:50-200<br>IF(ICC) 1:50-200 |
|--------------------|---|

|               |                       |
|---------------|-----------------------|
| Restrictions: | For Research Use only |
|---------------|-----------------------|

## Handling

---

|                    |  |
|--------------------|--|
| Format:            | Liquid   |
| Concentration:     | 1 µg/µL  |
| Buffer:            | 0.01M TBS( pH 7.4) with 1 % BSA, 0.02 % Proclin300 and 50 % Glycerol.  |
| Preservative:      | ProClin  |
| Precaution of Use: | This product contains ProClin: a POISONOUS AND HAZARDOUS SUBSTANCE, which should be handled by trained staff only. |
| Storage:           | 4 °C, -20 °C   |
| Storage Comment:   | Shipped at 4°C. Store at -20°C for one year. Avoid repeated freeze/thaw cycles.                                    |
| Expiry Date:       | 12 months  |



#### Immunohistochemistry (Paraffin-embedded Sections)

**Image 1.** Paraformaldehyde-fixed, paraffin embedded rat brain, Antigen retrieval by boiling in sodium citrate buffer (pH6) for 15min, Block endogenous peroxidase by 3% hydrogen peroxide for 30 minutes, Blocking buffer (normal goat serum) at 37°C for 20min, Antibody incubation with Rabbit Anti-COMMD9 Polyclonal Antibody, Unconjugated at 1:200 overnight at 4°C, followed by a conjugated secondary for 90 minutes and DAB staining.