

Datasheet for ABIN2173402
anti-CRNKL1 antibody (AA 201-300)



[Go to Product page](#)

3 Images

Overview

Quantity:	100 µL
Target:	CRNKL1
Binding Specificity:	AA 201-300
Reactivity:	Human, Mouse, Rat
Host:	Rabbit
Clonality:	Polyclonal
Conjugate:	This CRNKL1 antibody is un-conjugated
Application:	Western Blotting (WB), Immunofluorescence (Cultured Cells) (IF (cc)), Immunofluorescence (Paraffin-embedded Sections) (IF (p)), ELISA, Immunocytochemistry (ICC), Immunohistochemistry (Frozen Sections) (IHC (fro)), Immunohistochemistry (Paraffin-embedded Sections) (IHC (p))

Product Details

Immunogen:	KLH conjugated synthetic peptide derived from human CRNKL1
Isotype:	IgG
Cross-Reactivity:	Human, Mouse, Rat
Predicted Reactivity:	Dog,Cow,Sheep,Horse,Chicken
Purification:	Purified by Protein A.

Target Details

Target:	CRNKL1
---------	--------

Target Details

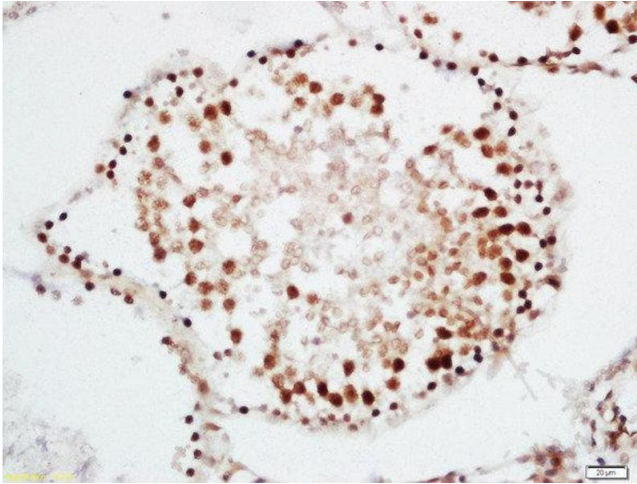
Alternative Name:	CRNKL1 (CRNKL1 Products)
Background:	Synonyms: CLF, CRN, Clf1, HCRN, SYF3, MSTP021, Crooked neck-like protein 1, Crooked neck homolog, CRNKL1, CGI-201 Background: Involved in pre-mRNA splicing process.
Gene ID:	51340
UniProt:	Q9BZJ0
Pathways:	Ribonucleoprotein Complex Subunit Organization

Application Details

Application Notes:	WB 1:300-5000 ELISA 1:500-1000 IHC-P 1:200-400 IHC-F 1:100-500 IF(IHC-P) 1:50-200 IF(IHC-F) 1:50-200 IF(ICC) 1:50-200 ICC 1:100-500
Restrictions:	For Research Use only

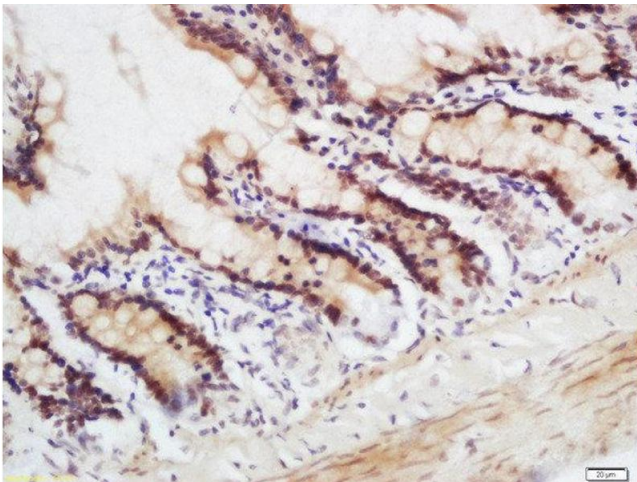
Handling

Format:	Liquid
Concentration:	1 µg/µL
Buffer:	0.01M TBS(pH 7.4) with 1 % BSA, 0.02 % Proclin300 and 50 % Glycerol.
Preservative:	ProClin
Precaution of Use:	This product contains ProClin: a POISONOUS AND HAZARDOUS SUBSTANCE, which should be handled by trained staff only.
Storage:	4 °C,-20 °C
Storage Comment:	Shipped at 4°C. Store at -20°C for one year. Avoid repeated freeze/thaw cycles.
Expiry Date:	12 months



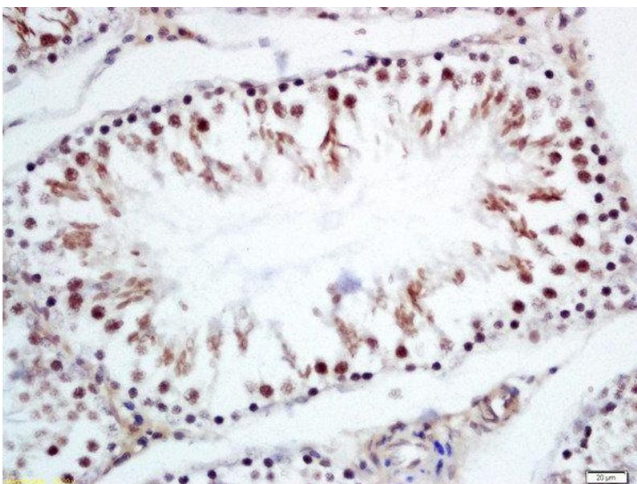
Immunohistochemistry (Paraffin-embedded Sections)

Image 1. Formalin-fixed and paraffin embedded rat testis labeled with Rabbit Anti-CRNKL1 Polyclonal Antibody, Unconjugated at 1:200 followed by conjugation to the secondary antibody and DAB staining



Immunohistochemistry (Paraffin-embedded Sections)

Image 2. Formalin-fixed and paraffin embedded mouse intestine labeled with Rabbit Anti-CRNKL1 Polyclonal Antibody, Unconjugated at 1:200 followed by conjugation to the secondary antibody and DAB staining.



Immunohistochemistry (Paraffin-embedded Sections)

Image 3. Formalin-fixed and paraffin embedded rat testis labeled with Rabbit Anti-CRNKL1 Polyclonal Antibody, Unconjugated (ABIN2173402) at 1:200 followed by conjugation to the secondary antibody and DAB staining