

Datasheet for ABIN2173847

anti-RAPGEF4 antibody (AA 151-250)



[Go to Product page](#)

1 Image

Overview

Quantity:	100 µL
Target:	RAPGEF4
Binding Specificity:	AA 151-250
Reactivity:	Human, Mouse, Rat
Host:	Rabbit
Clonality:	Polyclonal
Conjugate:	This RAPGEF4 antibody is un-conjugated
Application:	Western Blotting (WB), ELISA, Immunofluorescence (Cultured Cells) (IF (cc)), Immunofluorescence (Paraffin-embedded Sections) (IF (p)), Immunohistochemistry (Paraffin-embedded Sections) (IHC (p)), Immunocytochemistry (ICC), Immunohistochemistry (Frozen Sections) (IHC (fro))

Product Details

Immunogen:	KLH conjugated synthetic peptide derived from human Epac2
Isotype:	IgG
Cross-Reactivity:	Human, Mouse, Rat
Predicted Reactivity:	Dog,Cow,Sheep,Pig,Horse
Purification:	Purified by Protein A.

Target Details

Target:	RAPGEF4
---------	---------

Target Details

Alternative Name:	Epac2 (RAPGEF4 Products)
Background:	<p>Synonyms: 2, EPAC, CGEF2, EPAC2, EPAC 2, Nbla00496, CAMP-GEFII, Rap guanine nucleotide exchange factor 4, Exchange factor directly activated by cAMP 2, Exchange protein directly activated by cAMP 2, cAMP-regulated guanine nucleotide exchange factor II, RAPGEF4</p> <p>Background: Guanine nucleotide exchange factor (GEF) for RAP1A, RAP1B and RAP2A small GTPases that is activated by binding cAMP. Seems not to activate RAB3A. Involved in cAMP-dependent, PKA-independent exocytosis through interaction with RIMS2 (By similarity).</p>
Gene ID:	11069
UniProt:	Q8WZA2
Pathways:	Hormone Transport , Smooth Muscle Cell Migration

Application Details

Application Notes:	WB 1:300-5000 ELISA 1:500-1000 IHC-P 1:200-400 IHC-F 1:100-500 IF(IHC-P) 1:50-200 IF(IHC-F) 1:50-200 IF(ICC) 1:50-200 ICC 1:100-500
Restrictions:	For Research Use only

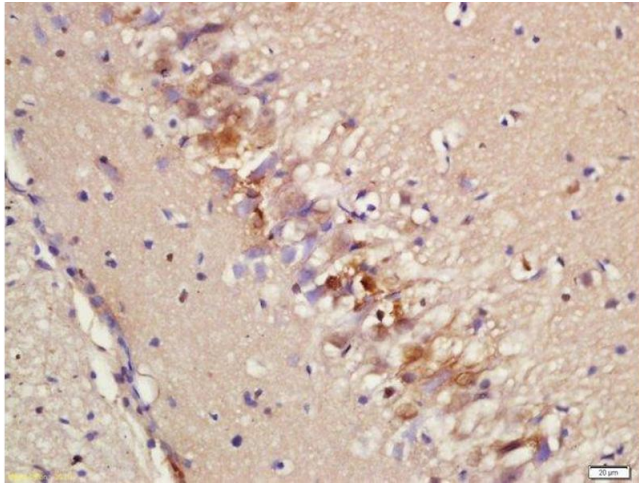
Handling

Format:	Liquid
Concentration:	1 µg/µL
Buffer:	0.01M TBS(pH 7.4) with 1 % BSA, 0.02 % Proclin300 and 50 % Glycerol.
Preservative:	ProClin
Precaution of Use:	This product contains ProClin: a POISONOUS AND HAZARDOUS SUBSTANCE, which should be handled by trained staff only.
Storage:	4 °C,-20 °C
Storage Comment:	Shipped at 4°C. Store at -20°C for one year. Avoid repeated freeze/thaw cycles.

Handling

Expiry Date: 12 months

Images



Immunohistochemistry (Paraffin-embedded Sections)

Image 1. Formalin-fixed and paraffin embedded rat brain labeled with Rabbit Anti-Epac2 Polyclonal Antibody, Unconjugated (ABIN2173847) at 1:200 followed by conjugation to the secondary antibody and DAB staining