

Datasheet for ABIN2173874
anti-ERBB2IP antibody (AA 21-120)[Go to Product page](#)

2 Images

Overview

Quantity:	100 µL
Target:	ERBB2IP
Binding Specificity:	AA 21-120
Reactivity:	Rat
Host:	Rabbit
Clonality:	Polyclonal
Conjugate:	This ERBB2IP antibody is un-conjugated
Application:	Western Blotting (WB), Immunocytochemistry (ICC), Immunofluorescence (Cultured Cells) (IF (cc)), Immunofluorescence (Paraffin-embedded Sections) (IF (p)), Immunohistochemistry (Frozen Sections) (IHC (fro)), Immunohistochemistry (Paraffin-embedded Sections) (IHC (p))

Product Details

Immunogen:	KLH conjugated synthetic peptide derived from human Erbin
Isotype:	IgG
Cross-Reactivity:	Rat
Predicted Reactivity:	Human,Mouse,Cow,Pig
Purification:	Purified by Protein A.

Target Details

Target:	ERBB2IP
---------	---------

Target Details

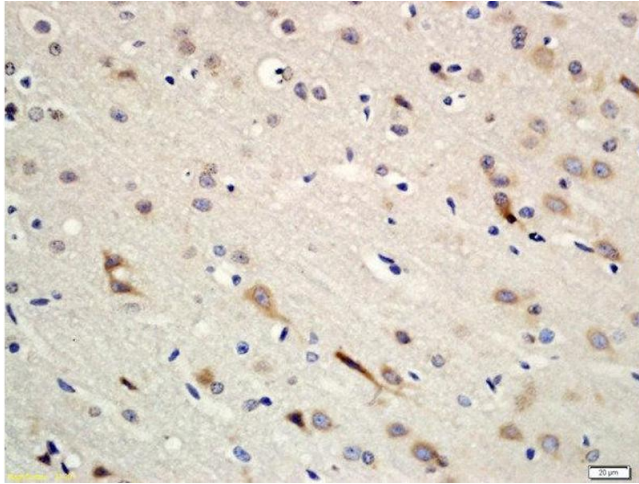
Alternative Name:	Erbin (ERBB2IP Products)
Background:	<p>Synonyms: LAP2, ERBIN, HEL-S-78, Protein LAP2, Densin-180-like protein, Erbb2-interacting protein, ERBB2IP, KIAA1225</p> <p>Background: Acts as an adapter for the receptor ERBB2, in epithelia. By binding the unphosphorylated 'Tyr-1248' of receptor ERBB2, it may contribute to stabilize this unphosphorylated state.</p>
Gene ID:	55914
UniProt:	Q96RT1
Pathways:	EGFR Signaling Pathway , Asymmetric Protein Localization

Application Details

Application Notes:	<p>WB 1:300-5000</p> <p>IHC-P 1:200-400</p> <p>IHC-F 1:100-500</p> <p>IF(IHC-P) 1:50-200</p> <p>IF(IHC-F) 1:50-200</p> <p>IF(ICC) 1:50-200</p> <p>ICC 1:100-500</p>
Restrictions:	For Research Use only

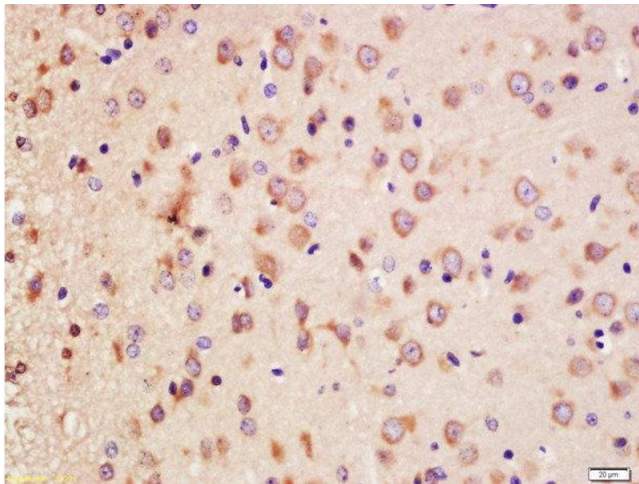
Handling

Format:	Liquid
Concentration:	1 µg/µL
Buffer:	0.01M TBS(pH 7.4) with 1 % BSA, 0.02 % Proclin300 and 50 % Glycerol.
Preservative:	ProClin
Precaution of Use:	This product contains ProClin: a POISONOUS AND HAZARDOUS SUBSTANCE, which should be handled by trained staff only.
Storage:	4 °C, -20 °C
Storage Comment:	Shipped at 4°C. Store at -20°C for one year. Avoid repeated freeze/thaw cycles.
Expiry Date:	12 months



Immunohistochemistry (Paraffin-embedded Sections)

Image 1. Formalin-fixed and paraffin embedded rat brain tissue labeled with Rabbit Anti-ErbB Polyclonal Antibody, Unconjugated (ABIN2173874) at 1:200 followed by conjugation to the secondary antibody and DAB staining



Immunohistochemistry (Paraffin-embedded Sections)

Image 2. Formalin-fixed and paraffin embedded rat brain labeled with Anti-ErbB Polyclonal Antibody, Unconjugated at 1:200 followed by conjugation to the secondary antibody and DAB staining.