

Datasheet for ABIN2173875  
**anti-ERCC6 antibody (AA 201-300)**[Go to Product page](#)

## 1 Image

## Overview

Quantity:	100 µL
Target:	ERCC6
Binding Specificity:	AA 201-300
Reactivity:	Rat
Host:	Rabbit
Clonality:	Polyclonal
Conjugate:	This ERCC6 antibody is un-conjugated
Application:	Western Blotting (WB), ELISA, Immunofluorescence (Cultured Cells) (IF (cc)), Immunofluorescence (Paraffin-embedded Sections) (IF (p)), Immunohistochemistry (Paraffin-embedded Sections) (IHC (p)), Immunocytochemistry (ICC), Immunohistochemistry (Frozen Sections) (IHC (fro))

## Product Details

Immunogen:	KLH conjugated synthetic peptide derived from human ERCC6
Isotype:	IgG
Cross-Reactivity:	Rat
Predicted Reactivity:	Human,Mouse
Purification:	Purified by Protein A.

## Target Details

Target:	ERCC6
---------	-------

## Target Details

Alternative Name:	ERCC6 ( <a href="#">ERCC6 Products</a> )
Background:	<p>Synonyms: CSB, CKN2, COFS, ARMD5, COFS1, RAD26, UVSS1, DNA excision repair protein ERCC-6, ATP-dependent helicase ERCC6, Cockayne syndrome protein CSB, ERCC6</p> <p>Background: Essential factor involved in transcription-coupled nucleotide excision repair which allows RNA polymerase II-blocking lesions to be rapidly removed from the transcribed strand of active genes. Upon DNA-binding, it locally modifies DNA conformation by wrapping the DNA around itself, thereby modifying the interface between stalled RNA polymerase II and DNA. It is required for transcription-coupled repair complex formation. It recruits the CSA complex (DCX(ERCC8) complex), nucleotide excision repair proteins and EP300 to the at sites of RNA polymerase II-blocking lesions.</p>
Gene ID:	2074
UniProt:	<a href="#">Q03468</a>
Pathways:	<a href="#">DNA Damage Repair</a> , <a href="#">Chromatin Binding</a>

## Application Details

Application Notes:	WB 1:300-5000 ELISA 1:500-1000 IHC-P 1:200-400 IHC-F 1:100-500 IF(IHC-P) 1:50-200 IF(IHC-F) 1:50-200 IF(ICC) 1:50-200 ICC 1:100-500
Restrictions:	For Research Use only

## Handling

Format:	Liquid
Concentration:	1 µg/µL
Buffer:	0.01M TBS( pH 7.4) with 1 % BSA, 0.02 % Proclin300 and 50 % Glycerol.
Preservative:	ProClin
Precaution of Use:	This product contains ProClin: a POISONOUS AND HAZARDOUS SUBSTANCE, which should be handled by trained staff only.

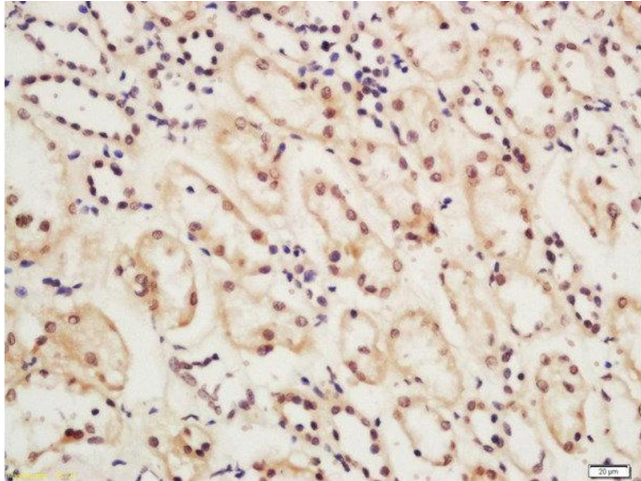
## Handling

Storage: 4 °C, -20 °C

Storage Comment: Shipped at 4°C. Store at -20°C for one year. Avoid repeated freeze/thaw cycles.

Expiry Date: 12 months

## Images



### Immunohistochemistry (Paraffin-embedded Sections)

**Image 1.** Formalin-fixed and paraffin embedded rat kidney tissue labeled with Rabbit Anti-ERCC6 Polyclonal Antibody, Unconjugated (ABIN2173875) at 1:200 followed by conjugation to the secondary antibody and DAB staining