



[Go to Product page](#)

Datasheet for ABIN2174097

anti-FAR1 antibody

1 Image

1 Publication

Overview

Quantity:	100 µL
Target:	FAR1
Reactivity:	Human, Mouse, Rat
Host:	Rabbit
Clonality:	Polyclonal
Conjugate:	This FAR1 antibody is un-conjugated
Application:	Western Blotting (WB), Immunofluorescence (Paraffin-embedded Sections) (IF (p)), ELISA, Immunohistochemistry (Paraffin-embedded Sections) (IHC (p))

Product Details

Immunogen:	KLH conjugated synthetic peptide derived from human FAR1
Isotype:	IgG
Cross-Reactivity:	Human, Mouse, Rat
Purification:	Purified by Protein A.

Target Details

Target:	FAR1
Alternative Name:	FAR1 (FAR1 Products)
Background:	Synonyms: Fatty acyl-CoA reductase 1, Fatty acyl CoA reductase 1, FAR1, FAR-1, FACR1_HUMAN. Background: FAR1

Application Details

Application Notes: WB 1:300-5000
ELISA 1:500-1000
IHC-P 1:200-400
IF(IHC-P) 1:50-200

Restrictions: For Research Use only

Handling

Format: Liquid

Concentration: 1 µg/µL

Buffer: 0.01M TBS(pH 7.4) with 1 % BSA, 0.02 % Proclin300 and 50 % Glycerol.

Preservative: ProClin

Precaution of Use: This product contains ProClin: a POISONOUS AND HAZARDOUS SUBSTANCE, which should be handled by trained staff only.

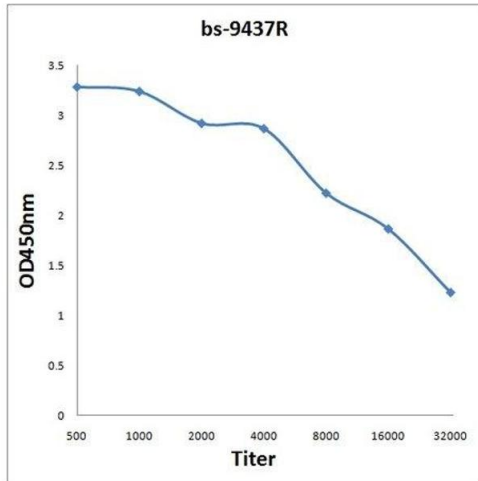
Storage: 4 °C,-20 °C

Storage Comment: Shipped at 4°C. Store at -20°C for one year. Avoid repeated freeze/thaw cycles.

Expiry Date: 12 months

Publications

Product cited in: Bestard-Escalas, Maimó-Barceló, Lopez, Reigada, Guardiola-Serrano, Ramos-Vivas, Hornemann, Okazaki, Barceló-Coblijn: "Common and Differential Traits of the Membrane Lipidome of Colon Cancer Cell Lines and their Secreted Vesicles: Impact on Studies Using Cell Lines." in: **Cancers**, Vol. 12, Issue 5, (2020) ([PubMed](#)).



ELISA

Image 1. Antigen: 2ug/100ul Primary: Antiserum, 1:500, 1:1000, 1:2000, 1:4000, 1:8000, 1:16000, 1:32000, Secondary: HRP conjugated Rabbit Anti-Goat IgG-HRP) at 1: 5000, TMB staining Read the data in Microplate Reader by 450nm.