



[Go to Product page](#)

Datasheet for ABIN2174637  
**anti-GPR113 antibody (AA 1-100)**

1 Image

### Overview

Quantity:	100 µL
Target:	GPR113
Binding Specificity:	AA 1-100
Reactivity:	Human
Host:	Rabbit
Clonality:	Polyclonal
Conjugate:	This GPR113 antibody is un-conjugated
Application:	Western Blotting (WB), ELISA, Immunofluorescence (Paraffin-embedded Sections) (IF (p)), Immunofluorescence (Cultured Cells) (IF (cc)), Immunohistochemistry (Paraffin-embedded Sections) (IHC (p)), Immunohistochemistry (Frozen Sections) (IHC (fro)), Immunocytochemistry (ICC)

### Product Details

Immunogen:	KLH conjugated synthetic peptide derived from human GPR113
Isotype:	IgG
Cross-Reactivity:	Human
Purification:	Purified by Protein A.

### Target Details

Target:	GPR113
Alternative Name:	GPR113 ( <a href="#">GPR113 Products</a> )

## Target Details

---

Background: Synonyms: FLJ16767, G-protein coupled receptor PGR23, GP113, GPR113, hGPCR37, PGR23, Probable G-protein coupled receptor 113, UNQ9196/PRO34000, GP113\_HUMAN.  
Background: GPR113

## Application Details

---

Application Notes: WB 1:300-5000  
ELISA 1:500-1000  
IHC-P 1:200-400  
IHC-F 1:100-500  
IF(IHC-P) 1:50-200  
IF(IHC-F) 1:50-200  
IF(ICC) 1:50-200  
ICC 1:100-500

Restrictions: For Research Use only

## Handling

---

Format: Liquid

Concentration: 1 µg/µL

Buffer: 0.01M TBS( pH 7.4) with 1 % BSA, 0.02 % Proclin300 and 50 % Glycerol.

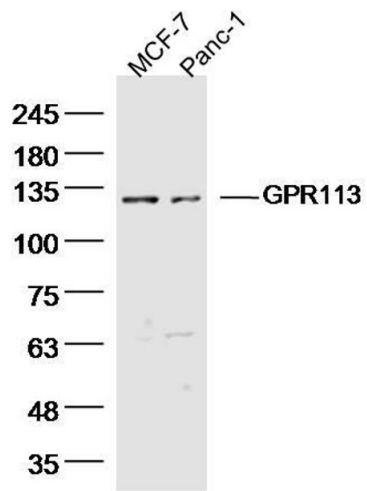
Preservative: ProClin

Precaution of Use: This product contains ProClin: a POISONOUS AND HAZARDOUS SUBSTANCE, which should be handled by trained staff only.

Storage: 4 °C, -20 °C

Storage Comment: Shipped at 4°C. Store at -20°C for one year. Avoid repeated freeze/thaw cycles.

Expiry Date: 12 months



### Western Blotting

**Image 1.** Lane 1: MCF-7 Cell lysates, Lane 2: Panc-1 Cell lysates, probed with GPR113 Polyclonal Antibody, unconjugated at 1:300 overnight at 4°C followed by a conjugated secondary antibody for 60 minutes at 37°C.