

Datasheet for ABIN2175279

**anti-Cytochrome C, Somatic Pseudogene 51 (CYCSP51) (AA 341-459) antibody**[Go to Product page](#)

## 1 Image

## Overview

Quantity:	100 µL
Target:	Cytochrome C, Somatic Pseudogene 51 (CYCSP51)
Binding Specificity:	AA 341-459
Reactivity:	Human, Mouse
Host:	Rabbit
Clonality:	Polyclonal
Conjugate:	Un-conjugated
Application:	Western Blotting (WB), Immunofluorescence (Cultured Cells) (IF (cc)), Immunofluorescence (Paraffin-embedded Sections) (IF (p)), ELISA, Immunohistochemistry (Frozen Sections) (IHC (fro)), Immunohistochemistry (Paraffin-embedded Sections) (IHC (p)), Immunocytochemistry (ICC)

## Product Details

Immunogen:	KLH conjugated synthetic peptide derived from human HCP1
Isotype:	IgG
Cross-Reactivity:	Human, Mouse
Predicted Reactivity:	Rat,Cow,Chicken
Purification:	Purified by Protein A.

## Target Details

Target:	Cytochrome C, Somatic Pseudogene 51 (CYCSP51)
---------	---

## Target Details

Alternative Name:	HCP1 ( <a href="#">CYCSP51 Products</a> )
Background:	<p>Synonyms: G21, HCP1, PCFT, Proton-coupled folate transporter, Heme carrier protein 1, PCFT/HCP1, Solute carrier family 46 member 1, SLC46A1</p> <p>Background: Has been shown to act both as an intestinal proton-coupled high-affinity folate transporter and as an intestinal heme transporter which mediates heme uptake from the gut lumen into duodenal epithelial cells. The iron is then released from heme and may be transported into the bloodstream. Dietary heme iron is an important nutritional source of iron. Shows a higher affinity for folate than heme.</p>
Gene ID:	113235
UniProt:	<a href="#">Q96NT5</a>
Pathways:	<a href="#">cAMP Metabolic Process</a> , <a href="#">Dicarboxylic Acid Transport</a>

## Application Details

Application Notes:	WB 1:300-5000 ELISA 1:500-1000 IHC-P 1:200-400 IHC-F 1:100-500 IF(IHC-P) 1:50-200 IF(IHC-F) 1:50-200 IF(ICC) 1:50-200 ICC 1:100-500
Restrictions:	For Research Use only

## Handling

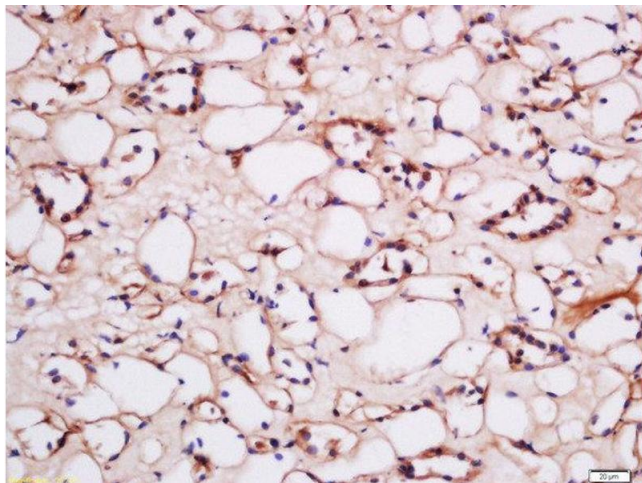
Format:	Liquid
Concentration:	1 µg/µL
Buffer:	0.01M TBS( pH 7.4) with 1 % BSA, 0.02 % Proclin300 and 50 % Glycerol.
Preservative:	ProClin
Precaution of Use:	This product contains ProClin: a POISONOUS AND HAZARDOUS SUBSTANCE, which should be handled by trained staff only.
Storage:	4 °C, -20 °C

## Handling

Storage Comment: Shipped at 4°C. Store at -20°C for one year. Avoid repeated freeze/thaw cycles.

Expiry Date: 12 months

## Images



### Immunohistochemistry (Paraffin-embedded Sections)

**Image 1.** Formalin-fixed and paraffin embedded human kidney labeled with Anti-HCP1 Polyclonal Antibody, Unconjugated at 1:200 followed by conjugation to the secondary antibody and DAB staining.