



[Go to Product page](#)

Datasheet for ABIN2176325  
**anti-IFNE antibody (AA 101-200)**

1 Image

### Overview

Quantity:	100 µL
Target:	IFNE
Binding Specificity:	AA 101-200
Reactivity:	Human
Host:	Rabbit
Clonality:	Polyclonal
Conjugate:	This IFNE antibody is un-conjugated
Application:	ELISA, Western Blotting (WB)

### Product Details

Immunogen:	KLH conjugated synthetic peptide derived from human IFNE1
Isotype:	IgG
Cross-Reactivity:	Human
Predicted Reactivity:	Mouse
Purification:	Purified by Protein A.

### Target Details

Target:	IFNE
Alternative Name:	IFNE1 ( <a href="#">IFNE Products</a> )
Background:	Synonyms: Antiluteolysin, IFN-epsilon, IFNE, IFNE_HUMAN, IFNT1, Interferon epsilon 1,

## Target Details

Interferon epsilon, Interferon epsilon-1, Interferon tau 1, OTP, TP1, Trophoblastin.

Background: IFNE1

Pathways: [Hormone Activity](#)

## Application Details

Application Notes: WB 1:300-5000  
ELISA 1:500-1000

Restrictions: For Research Use only

## Handling

Format: Liquid

Concentration: 1 µg/µL

Buffer: 0.01M TBS( pH 7.4) with 1 % BSA, 0.02 % Proclin300 and 50 % Glycerol.

Preservative: ProClin

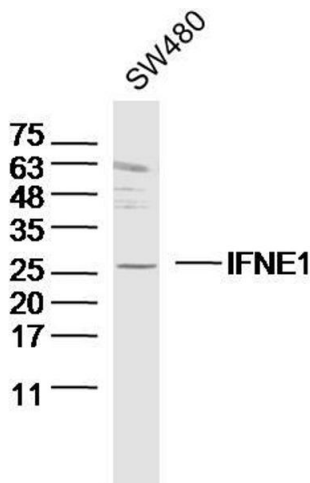
Precaution of Use: This product contains ProClin: a POISONOUS AND HAZARDOUS SUBSTANCE, which should be handled by trained staff only.

Storage: 4 °C, -20 °C

Storage Comment: Shipped at 4°C. Store at -20°C for one year. Avoid repeated freeze/thaw cycles.

Expiry Date: 12 months

## Images



### Western Blotting

**Image 1.** SW480 lysates probed with IFNE1 Polyclonal Antibody, Unconjugated at 1:300 dilution and 4°C overnight incubation. Followed by conjugated secondary antibody incubation at 1:10000 for 60 min at 37°C.