

Datasheet for ABIN2177115  
**anti-KCNA3 antibody (AA 485-575)**[Go to Product page](#)

## 1 Image

## Overview

Quantity:	100 µL
Target:	KCNA3
Binding Specificity:	AA 485-575
Reactivity:	Human
Host:	Rabbit
Clonality:	Polyclonal
Conjugate:	This KCNA3 antibody is un-conjugated
Application:	Western Blotting (WB), ELISA, Immunofluorescence (Cultured Cells) (IF (cc)), Immunofluorescence (Paraffin-embedded Sections) (IF (p)), Immunohistochemistry (Paraffin-embedded Sections) (IHC (p)), Immunocytochemistry (ICC), Immunohistochemistry (Frozen Sections) (IHC (fro))

## Product Details

Immunogen:	KLH conjugated synthetic peptide derived from human KCNA3
Isotype:	IgG
Cross-Reactivity:	Human
Predicted Reactivity:	Mouse,Rat,Dog,Cow,Sheep,Pig,Horse,Chicken
Purification:	Purified by Protein A.

## Target Details

Target:	KCNA3
---------	-------

Target Details

Alternative Name:	KCNA3 ( <a href="#">KCNA3 Products</a> )
Background:	<p>Synonyms: MK3, HGK5, HLK3, PCN3, HPCN3, KV1.3, HUKIII, Potassium voltage-gated channel subfamily A member 3, Voltage-gated K(+) channel HuKIII, Voltage-gated potassium channel subunit Kv1.3, KCNA3</p> <p>Background: Mediates the voltage-dependent potassium ion permeability of excitable membranes. Assuming opened or closed conformations in response to the voltage difference across the membrane, the protein forms a potassium-selective channel through which potassium ions may pass in accordance with their electrochemical gradient.</p>
Gene ID:	3738
UniProt:	<a href="#">P22001</a>

Application Details

Application Notes:	<p>WB 1:300-5000</p> <p>ELISA 1:500-1000</p> <p>IHC-P 1:200-400</p> <p>IHC-F 1:100-500</p> <p>IF(IHC-P) 1:50-200</p> <p>IF(IHC-F) 1:50-200</p> <p>IF(ICC) 1:50-200</p> <p>ICC 1:100-500</p>
Restrictions:	For Research Use only

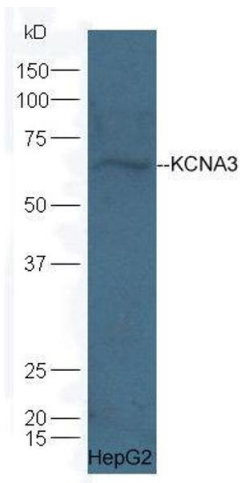
Handling

Format:	Liquid
Concentration:	1 µg/µL
Buffer:	0.01M TBS( pH 7.4) with 1 % BSA, 0.02 % Proclin300 and 50 % Glycerol.
Preservative:	ProClin
Precaution of Use:	This product contains ProClin: a POISONOUS AND HAZARDOUS SUBSTANCE, which should be handled by trained staff only.
Storage:	4 °C,-20 °C
Storage Comment:	Shipped at 4°C. Store at -20°C for one year. Avoid repeated freeze/thaw cycles.

Handling

Expiry Date: 12 months

Images



Western Blotting

**Image 1.** HepG2 lysate probed with Rabbit Anti-KCNA3 polyclonal antibody at 1:5000 90min in 37°C