



[Go to Product page](#)

Datasheet for ABIN2177157  
**anti-Kinesin antibody (AA 561-660) (FITC)**

1 Image

### Overview

Quantity:	100 µL
Target:	Kinesin
Binding Specificity:	AA 561-660
Reactivity:	Human, Mouse
Host:	Rabbit
Clonality:	Polyclonal
Conjugate:	This Kinesin antibody is conjugated to FITC
Application:	Flow Cytometry (FACS), Immunofluorescence (Cultured Cells) (IF (cc)), Immunofluorescence (Paraffin-embedded Sections) (IF (p))

### Product Details

Immunogen:	KLH conjugated synthetic peptide derived from human Kinesin
Isotype:	IgG
Cross-Reactivity:	Human, Mouse
Predicted Reactivity:	Rat,Cow,Pig,Horse,Chicken,Rabbit
Purification:	Purified by Protein A.

### Target Details

Target:	Kinesin
Abstract:	<a href="#">Kinesin Products</a>

## Target Details

---

Background: Synonyms: KNS, KINH, KNS1, UKHC, HEL-S-61, Kinesin-1 heavy chain, Conventional kinesin heavy chain, Ubiquitous kinesin heavy chain, KIF5B  
Background: Microtubule-dependent motor required for normal distribution of mitochondria and lysosomes.

---

Gene ID: 3799

---

UniProt: [P33176](#)

---

## Application Details

---

Application Notes: FCM 1:20-100  
IF(IHC-P) 1:50-200  
IF(IHC-F) 1:50-200  
IF(ICC) 1:50-200

---

Restrictions: For Research Use only

---

## Handling

---

Format: Liquid

---

Concentration: 1 µg/µL

---

Buffer: Aqueous buffered solution containing 0.01M TBS ( pH 7.4) with 1 % BSA, 0.03 % Proclin300 and 50 % Glycerol.

---

Preservative: ProClin

---

Precaution of Use: This product contains ProClin: a POISONOUS AND HAZARDOUS SUBSTANCE, which should be handled by trained staff only.

---

Storage: -20 °C

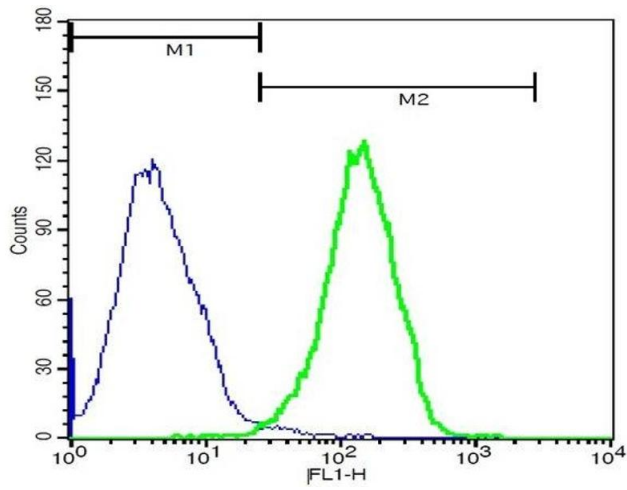
---

Storage Comment: Store at -20°C. Aliquot into multiple vials to avoid repeated freeze-thaw cycles.

---

Expiry Date: 12 months

---



### Flow Cytometry

**Image 1.** HeLa cells probed with Rabbit Anti-Kinesin Polyclonal Antibody, FITC Conjugated at 1:100 (green) for 40 minutes compared to control cells (blue).