

Datasheet for ABIN2177376  
**anti-EDG4 antibody (AA 1-100)**[Go to Product page](#)

## 2 Images

## Overview

Quantity:	100 µL
Target:	EDG4 (LPAR2)
Binding Specificity:	AA 1-100
Reactivity:	Mouse, Rat
Host:	Rabbit
Clonality:	Polyclonal
Conjugate:	This EDG4 antibody is un-conjugated
Application:	ELISA, Flow Cytometry (FACS), Immunohistochemistry (Paraffin-embedded Sections) (IHC (p)), Immunofluorescence (Cultured Cells) (IF (cc)), Immunofluorescence (Paraffin-embedded Sections) (IF (p)), Immunocytochemistry (ICC), Immunohistochemistry (Frozen Sections) (IHC (fro))

## Product Details

Immunogen:	KLH conjugated synthetic peptide derived from human LPA2
Isotype:	IgG
Cross-Reactivity:	Mouse, Rat
Predicted Reactivity:	Human,Dog,Cow,Sheep,Pig,Horse,Rabbit
Purification:	Purified by Protein A.

## Target Details

Target:	EDG4 (LPAR2)
---------	--------------

## Target Details

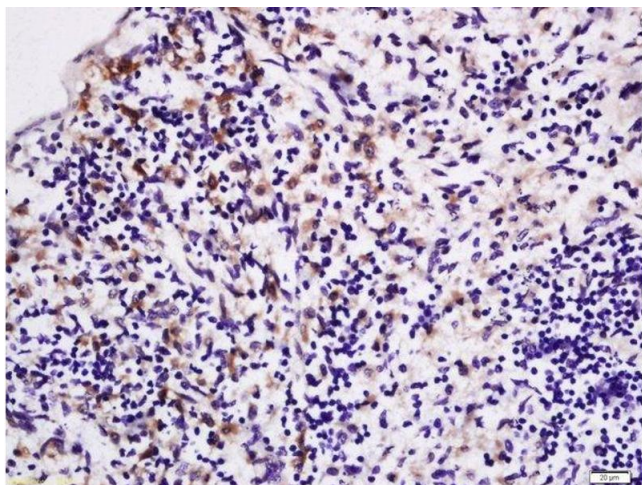
Alternative Name:	LPA2 ( <a href="#">LPA2 Products</a> )
Background:	<p>Synonyms: EDG4, LPA2, EDG-4, LPA-2, Lysophosphatidic acid receptor 2, LPA receptor 2, Lysophosphatidic acid receptor Edg-4, LPAR2</p> <p>Background: Receptor for lysophosphatidic acid (LPA), a mediator of diverse cellular activities. Seems to be coupled to the G(i)/G(o), G(12)/G(13), and G(q) families of heteromeric G proteins. Plays a key role in phospholipase C-beta (PLC-beta) signaling pathway. Stimulates phospholipase C (PLC) activity in a manner that is independent of RALA activation.</p>
Gene ID:	9170
UniProt:	<a href="#">Q9HBW0</a>

## Application Details

Application Notes:	<p>WB 1:300-5000</p> <p>ELISA 1:500-1000</p> <p>FCM 1:20-100</p> <p>IHC-P 1:200-400</p> <p>IHC-F 1:100-500</p> <p>IF(IHC-P) 1:50-200</p> <p>IF(IHC-F) 1:50-200</p> <p>IF(ICC) 1:50-200</p> <p>ICC 1:100-500</p>
Restrictions:	For Research Use only

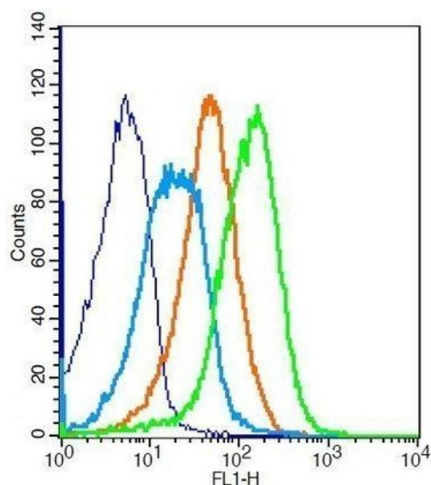
## Handling

Format:	Liquid
Concentration:	1 µg/µL
Buffer:	0.01M TBS( pH 7.4) with 1 % BSA, 0.02 % Proclin300 and 50 % Glycerol.
Preservative:	ProClin
Precaution of Use:	This product contains ProClin: a POISONOUS AND HAZARDOUS SUBSTANCE, which should be handled by trained staff only.
Storage:	4 °C,-20 °C
Storage Comment:	Shipped at 4°C. Store at -20°C for one year. Avoid repeated freeze/thaw cycles.



#### Immunohistochemistry (Paraffin-embedded Sections)

**Image 1.** Formalin-fixed and paraffin embedded rat spleen labeled with Rabbit Anti-LPA2 Polyclonal Antibody, Unconjugated (ABIN2177376) at 1:200 followed by conjugation to the secondary antibody and DAB staining



#### Flow Cytometry

**Image 2.** Mouse splenocytes probed with Rabbit Anti-LPA2 Polyclonal Antibody, Unconjugated .