



Datasheet for ABIN2177411  
**anti-LRRC19 antibody (AA 41-140)**



[Go to Product page](#)

1 Image

Overview

Quantity:	100 µL
Target:	LRRC19
Binding Specificity:	AA 41-140
Reactivity:	Human
Host:	Rabbit
Clonality:	Polyclonal
Conjugate:	This LRRC19 antibody is un-conjugated
Application:	ELISA, Immunofluorescence (Cultured Cells) (IF (cc)), Immunofluorescence (Paraffin-embedded Sections) (IF (p)), Immunocytochemistry (ICC), Immunohistochemistry (Paraffin-embedded Sections) (IHC (p)), Immunohistochemistry (Frozen Sections) (IHC (fro))

Product Details

Immunogen:	KLH conjugated synthetic peptide derived from human LRRC19
Isotype:	IgG
Predicted Reactivity:	Human
Purification:	Purified by Protein A.

Target Details

Target:	LRRC19
Alternative Name:	LRRC19 ( <a href="#">LRRC19 Products</a> )

## Target Details

---

Background: Synonyms: FLJ21302, Leucine rich repeat containing 19, leucine rich repeat containing protein 19, Leucine-rich repeat-containing protein 19, LRC19\_HUMAN, LRRC 19, LRRC19.  
Background: LRRC19

## Application Details

---

Application Notes: ELISA 1:500-1000  
IHC-P 1:200-400  
IHC-F 1:100-500  
IF(IHC-P) 1:50-200  
IF(IHC-F) 1:50-200  
IF(ICC) 1:50-200  
ICC 1:100-500

Restrictions: For Research Use only

## Handling

---

Format: Liquid

Concentration: 1 µg/µL

Buffer: 0.01M TBS( pH 7.4) with 1 % BSA, 0.02 % Proclin300 and 50 % Glycerol.

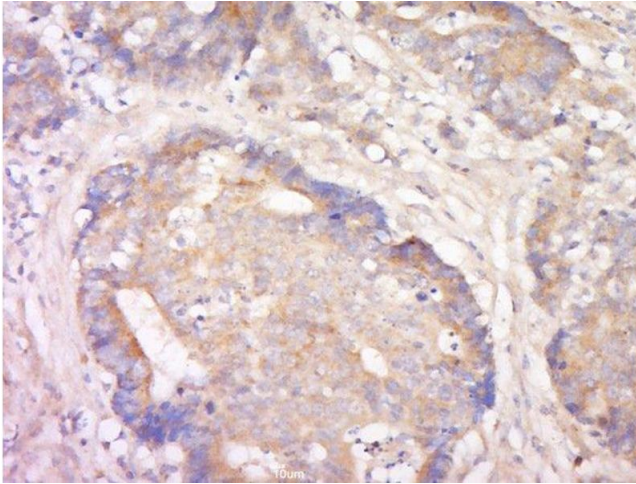
Preservative: ProClin

Precaution of Use: This product contains ProClin: a POISONOUS AND HAZARDOUS SUBSTANCE, which should be handled by trained staff only.

Storage: 4 °C,-20 °C

Storage Comment: Shipped at 4°C. Store at -20°C for one year. Avoid repeated freeze/thaw cycles.

Expiry Date: 12 months



#### Immunohistochemistry (Paraffin-embedded Sections)

**Image 1.** Paraformaldehyde-fixed, paraffin embedded human colon cancer, Antigen retrieval by boiling in sodium citrate buffer (pH6) for 15min, Block endogenous peroxidase by 3% hydrogen peroxide for 30 minutes, Blocking buffer (normal goat serum) at 37°C for 20min, Antibody incubation with Rabbit Anti-LRRC19 Polyclonal Antibody, Unconjugated at 1:200 overnight at 4°C, followed by a conjugated secondary and DAB staining.