



Datasheet for ABIN2178124  
**anti-ARPC3 antibody (AA 2-100)**



[Go to Product page](#)

1 Image

### Overview

Quantity:	100 µL
Target:	ARPC3
Binding Specificity:	AA 2-100
Reactivity:	Human, Mouse, Xenopus laevis
Host:	Rabbit
Clonality:	Polyclonal
Conjugate:	This ARPC3 antibody is un-conjugated
Application:	Western Blotting (WB), ELISA, Immunohistochemistry (Paraffin-embedded Sections) (IHC (p)), Flow Cytometry (FACS), Immunofluorescence (Cultured Cells) (IF (cc)), Immunofluorescence (Paraffin-embedded Sections) (IF (p)), Immunohistochemistry (Frozen Sections) (IHC (fro)), Immunocytochemistry (ICC)

### Product Details

Immunogen:	KLH conjugated synthetic peptide derived from human p21-ARC
Isotype:	IgG
Cross-Reactivity:	Human, Mouse, Xenopus laevis
Predicted Reactivity:	Rat,Cow,Chicken,Rabbit
Purification:	Purified by Protein A.

### Target Details

Target:	ARPC3
---------	-------

## Target Details

---

Alternative Name:	p21-ARC ( <a href="#">ARPC3 Products</a> )
Background:	Synonyms: ARC21, p21-Arc, Actin-related protein 2/3 complex subunit 3, Arp2/3 complex 21 kDa subunit, ARPC3 Background: Functions as component of the Arp2/3 complex which is involved in regulation of actin polymerization and together with an activating nucleation-promoting factor (NPF) mediates the formation of branched actin networks.
Gene ID:	10094
UniProt:	<a href="#">O15145</a>
Pathways:	<a href="#">RTK Signaling, Regulation of Actin Filament Polymerization</a>

## Application Details

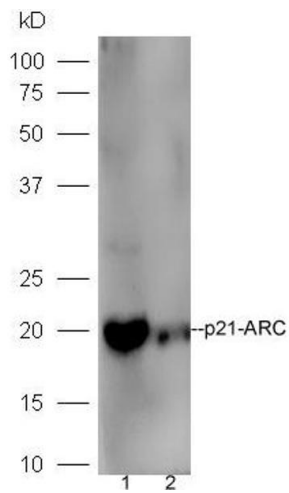
---

Application Notes:	WB 1:300-5000 ELISA 1:500-1000 FCM 1:20-100 IHC-P 1:200-400 IHC-F 1:100-500 IF(IHC-P) 1:50-200 IF(IHC-F) 1:50-200 IF(ICC) 1:50-200 ICC 1:100-500
Restrictions:	For Research Use only

## Handling

---

Format:	Liquid
Concentration:	1 µg/µL
Buffer:	0.01M TBS( pH 7.4) with 1 % BSA, 0.02 % Proclin300 and 50 % Glycerol.
Preservative:	ProClin
Precaution of Use:	This product contains ProClin: a POISONOUS AND HAZARDOUS SUBSTANCE, which should be handled by trained staff only.
Storage:	4 °C,-20 °C
Storage Comment:	Shipped at 4°C. Store at -20°C for one year. Avoid repeated freeze/thaw cycles.



### Western Blotting

**Image 1.** Line1,mouse intestinal lysate; Line2, Raji lysate probed with Rabbit Anti-p21-ARC Polyclonal Antibody, Unconjugated (ABIN2178124) at 1:300 in 4°C. Followed by conjugation to secondary antibody at 1:5000 90min in 37°C.