



Datasheet for ABIN2178715
anti-CTSA antibody (AA 401-480)



[Go to Product page](#)

3 Images

Overview

Quantity:	100 µL
Target:	CTSA
Binding Specificity:	AA 401-480
Reactivity:	Human, Mouse, Rat
Host:	Rabbit
Clonality:	Polyclonal
Conjugate:	This CTSA antibody is un-conjugated
Application:	Western Blotting (WB), ELISA, Flow Cytometry (FACS), Immunofluorescence (Cultured Cells) (IF (cc)), Immunofluorescence (Paraffin-embedded Sections) (IF (p)), Immunohistochemistry (Paraffin-embedded Sections) (IHC (p)), Immunohistochemistry (Frozen Sections) (IHC (fro))

Product Details

Immunogen:	KLH conjugated synthetic peptide derived from human Lysosomal Protective Protein
Isotype:	IgG
Cross-Reactivity:	Human, Mouse, Rat
Predicted Reactivity:	Dog,Cow,Pig,Horse
Purification:	Purified by Protein A.

Target Details

Target:	CTSA
---------	------

Target Details

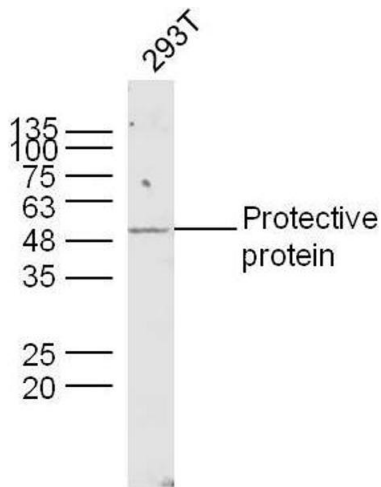
Alternative Name:	Lysosomal Protective protein (CTSA Products)
Background:	<p>Synonyms: GSL, GLB2, NGBE, PPCA, PPGB, Lysosomal protective protein, Carboxypeptidase C, Carboxypeptidase L, Cathepsin A, Protective protein cathepsin A, Protective protein for beta-galactosidase, CTSA</p> <p>Background: Protective protein appears to be essential for both the activity of beta-galactosidase and neuraminidase, it associates with these enzymes and exerts a protective function necessary for their stability and activity. This protein is also a carboxypeptidase and can deamidate tachykinins.</p>
Gene ID:	5476
UniProt:	P10619

Application Details

Application Notes:	WB 1:300-5000 ELISA 1:500-1000 FCM 1:20-100 IHC-P 1:200-400 IHC-F 1:100-500 IF(IHC-P) 1:50-200 IF(IHC-F) 1:50-200 IF(ICC) 1:50-200
Restrictions:	For Research Use only

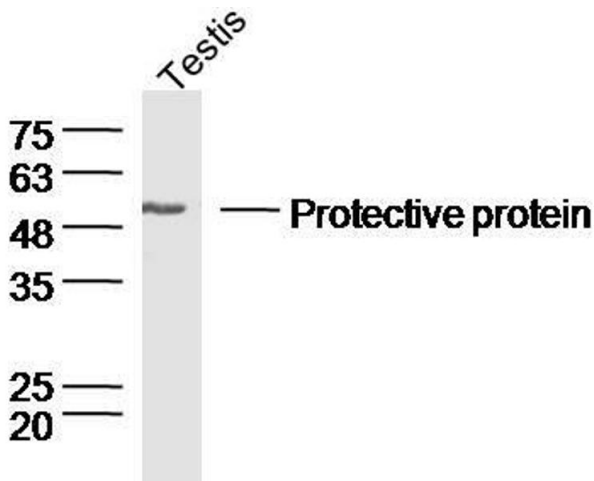
Handling

Format:	Liquid
Concentration:	1 µg/µL
Buffer:	0.01M TBS(pH 7.4) with 1 % BSA, 0.02 % Proclin300 and 50 % Glycerol.
Preservative:	ProClin
Precaution of Use:	This product contains ProClin: a POISONOUS AND HAZARDOUS SUBSTANCE, which should be handled by trained staff only.
Storage:	4 °C,-20 °C
Storage Comment:	Shipped at 4°C. Store at -20°C for one year. Avoid repeated freeze/thaw cycles.



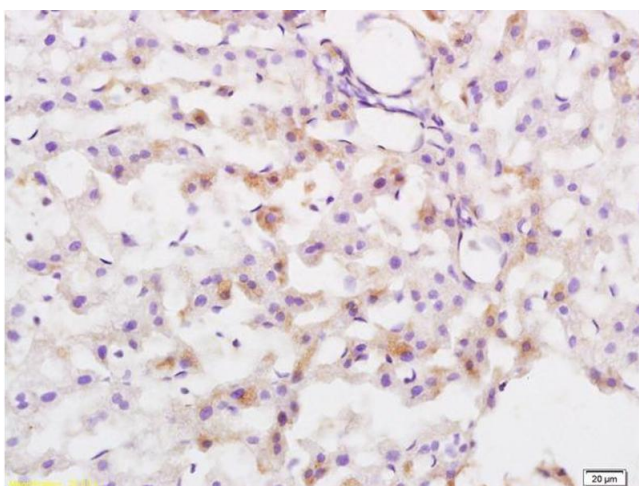
Western Blotting

Image 1. Human 293T lysates probed with Lysosomal Protective Protein Polyclonal Antibody, unconjugated at 1:300 overnight at 4°C followed by a conjugated secondary antibody at 1:10000 for 90 minutes at 37°C.



Western Blotting

Image 2. Mouse testis lysates probed with Rabbit Anti-Lysosomal Protective Protein Polyclonal Antibody, Unconjugated at 1:300 overnight at 4°C. Followed by a conjugated secondary antibody at 1:5000 for 90 min at 37°C.



Immunohistochemistry (Paraffin-embedded Sections)

Image 3. Formalin-fixed and paraffin embedded rat liver tissue labeled with Anti Protective Protein Polyclonal Antibody, Unconjugated at 1:200 followed by conjugation to the secondary antibody and DAB staining